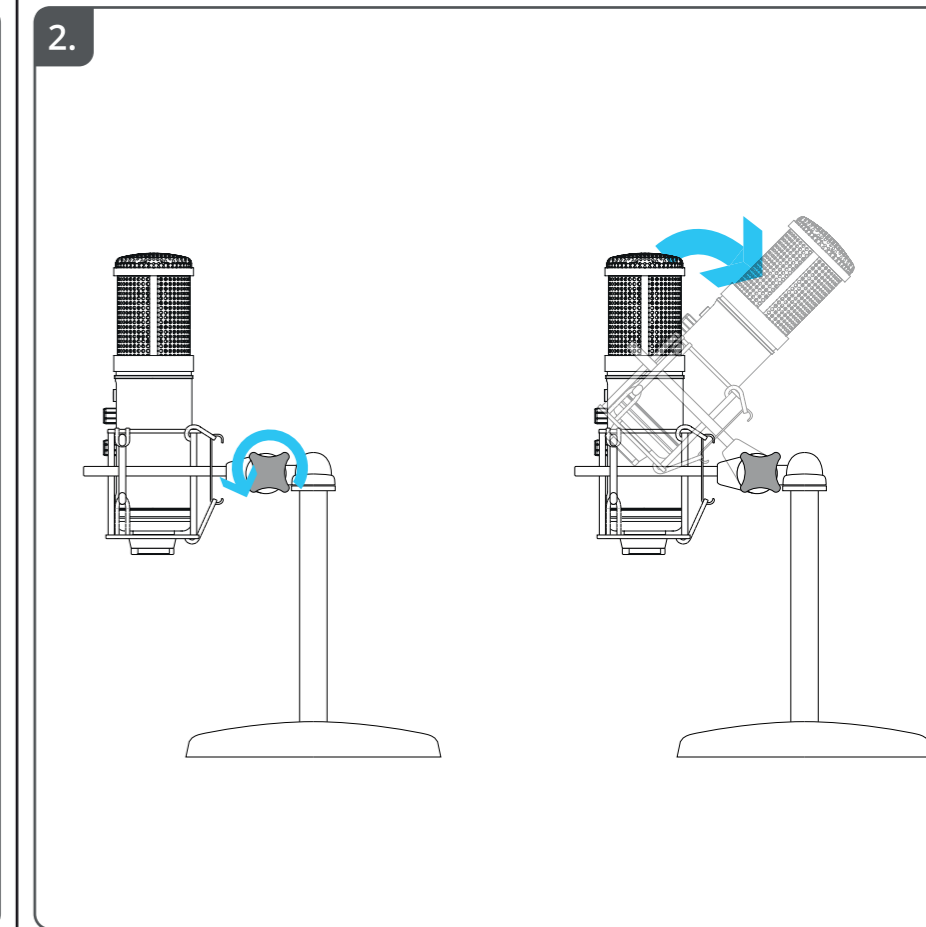
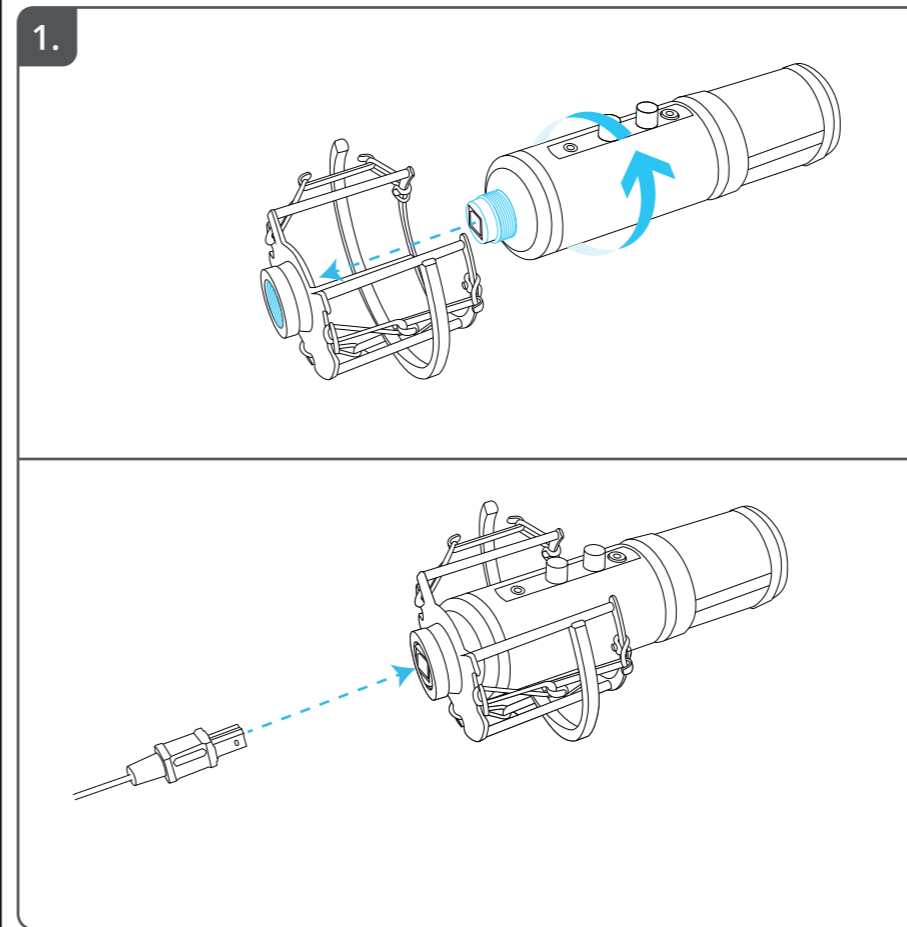


 Trust



**EXXO** | STREAMING MICROPHONE



3.

Diagram showing a microphone on a stand connected to a PC. A blue arrow labeled 'a' points to the microphone's USB connector. Below, a Windows taskbar shows the speaker icon highlighted with a red box and labeled 'b'. A context menu is open with 'Sounds' highlighted. To the right, two screenshots of the Windows 'Sound' control panel are shown. The top screenshot shows the 'Recording' tab with 'Microphone' selected and 'Set Default' highlighted with a red box and labeled 'c'. The bottom screenshot shows the 'Playback' tab with 'Speakers' selected and 'Set Default' highlighted with a red box and labeled 'd'.

4.

Diagram showing a microphone connected to a pair of headphones. A blue arrow labeled 'a' points to the microphone's 3.5mm jack. A circular inset shows the control panel with 'HEADPHONES' text and arrows pointing to the headphone icon. Below, a screenshot of the Windows 'Speakers Properties' dialog box is shown. The 'Levels' tab is active, with 'Microphone' selected and its volume slider highlighted with a red box and labeled 'c'. The 'Properties' button is highlighted with a red box and labeled 'a'. A blue arrow labeled 'd' points to the 'Monitor Volume' label below the dialog.

MONITOR VOLUME

5.

Diagram showing a microphone with a circular inset of its control panel. The 'GAIN/LED' knob is highlighted with a blue arrow and labeled 'a'. The 'MUTE' button is highlighted with a red arrow and labeled 'b'. Below, a screenshot of the microphone's control panel is shown. The 'MUTE' button is highlighted with a red box and labeled 'b'. To the right, two rows of indicator lights are shown: the top row has four red lights and a green microphone icon, while the bottom row has four white lights and a red microphone icon.

6.

Diagram showing a microphone with a circular inset of its control panel. The 'MUTE' button is highlighted with a red arrow and labeled 'a'. Below, five different microphone models are shown in a row, each with a different colored LED ring (white, red, blue, green, purple).