

StarTech.com
Hard-to-find made easy®

USB 3.0 HD Video Capture Device - 1080p

USB3HDCAP



*actual product may vary from photos

DE: Bedienungsanleitung - de.startech.com

FR: Guide de l'utilisateur - fr.startech.com

ES: Guía del usuario - es.startech.com

IT: Guida per l'uso - it.startech.com

NL: Gebruiksaanwijzing - nl.startech.com

PT: Guia do usuário - pt.startech.com

For the most up-to-date information, please visit: www.startech.com

FCC Compliance Statement

This equipment has been tested and found to comply with the limits for a Class B digital device, pursuant to part 15 of the FCC Rules. These limits are designed to provide reasonable protection against harmful interference in a residential installation. This equipment generates, uses and can radiate radio frequency energy and, if not installed and used in accordance with the instructions, may cause harmful interference to radio communications. However, there is no guarantee that interference will not occur in a particular installation. If this equipment does cause harmful interference to radio or television reception, which can be determined by turning the equipment off and on, the user is encouraged to try to correct the interference by one or more of the following measures:

- Reorient or relocate the receiving antenna.
- Increase the separation between the equipment and receiver.
- Connect the equipment into an outlet on a circuit different from that to which the receiver is connected.
- Consult the dealer or an experienced radio/TV technician for help.

Use of Trademarks, Registered Trademarks, and other Protected Names and Symbols

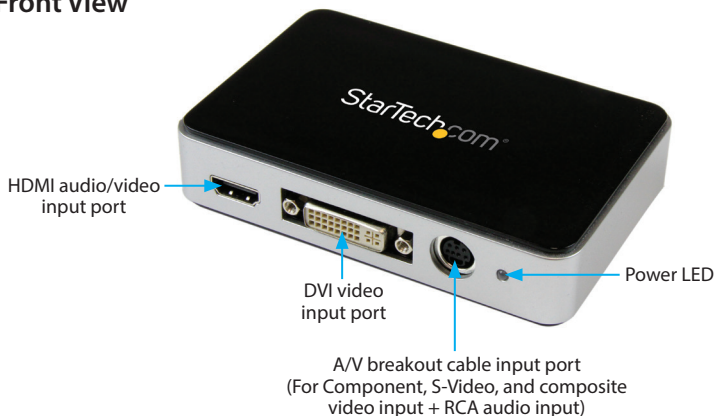
This manual may make reference to trademarks, registered trademarks, and other protected names and/or symbols of third-party companies not related in any way to StarTech.com. Where they occur these references are for illustrative purposes only and do not represent an endorsement of a product or service by StarTech.com, or an endorsement of the product(s) to which this manual applies by the third-party company in question. Regardless of any direct acknowledgement elsewhere in the body of this document, StarTech.com hereby acknowledges that all trademarks, registered trademarks, service marks, and other protected names and/or symbols contained in this manual and related documents are the property of their respective holders.

Table of Contents

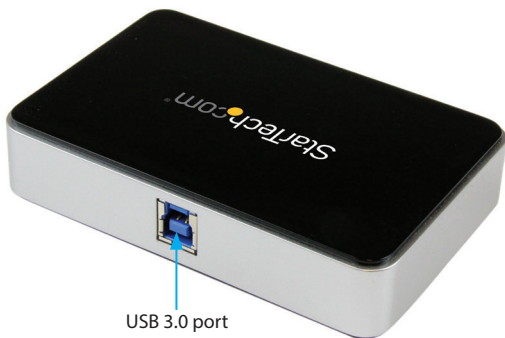
Product Diagram	1
Front View	1
Rear View	1
Introduction	2
Packaging Contents	2
System Requirements.....	2
Installation	3
Software Installation.....	3
Hardware Installation	5
Software Operation	8
How to Use	8
Stream Catcher.....	8
Technical Support	21
Warranty Information.....	21

Product Diagram

Front View



Rear View



Introduction

Packaging Contents

- 1x USB 3.0 HD video capture device (USB3HDCAP)
- 1x A/V breakout cable
- 1x DVI to VGA video adapter
- 1x USB 3.0 cable
- 1x Software installation disc
- 1x Instruction manual

System Requirements

Computer system with:

- Available USB 3.0 port
- CPU: i3 Dual Core 2.8GHz or higher
- RAM: 2GB or higher
- Microsoft® Windows® XP/Vista/7/8/8.1 (32/64-bit)
- HDMI/DVI/VGA/Component/S-Video/Composite audio/video source with cabling (DVD, DVR, VCR, Etc.)

Notes:

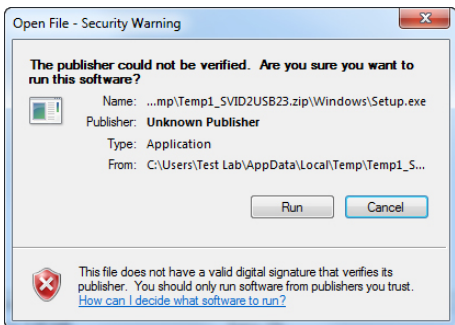
- The USB3HDCAP requires a USB 3.0-equipped computer. This product is not backwards compatible with USB 2.0/1.1.
- The USB3HDCAP product will not record digitally encrypted content (e.g. DVDs, Blu-rays, etc.).
- This product is not compatible with Etron USB controllers, or ASMedia 1042 / 1042A USB controllers.

Installation

Software Installation

Note: Please complete the Software Installation steps prior to Hardware Installation steps.

1. Download the latest software from the StarTech.com website (**recommended**)
or
Insert the included driver and software installation disc into your DVD-ROM drive.
2. Locate and run the Setup application (Setup.exe). This file will be located in the main file directory.
Note: If using the included software installation disc, the software may begin automatically.
3. The driver installation program will begin. If a Windows Security dialog window appears, click the “Run” or “Install this driver software anyway” option to proceed.



4. The installation wizard will now walk you through the steps for all driver and software installation. You will be prompted to confirm and continue the installation process several times. Please follow the on-screen prompts in order to complete the software installation.

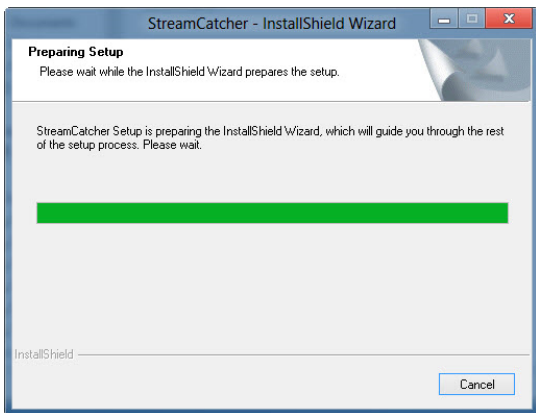
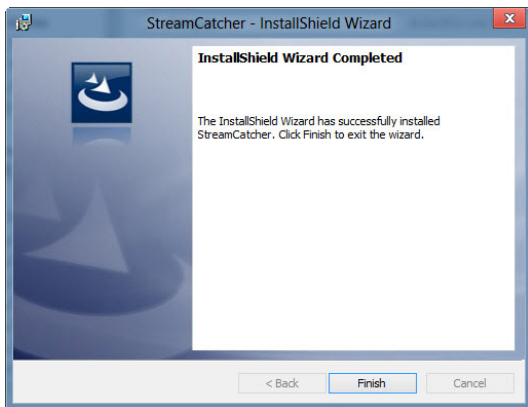


Illustration of the Windows InstallShield during the installation process.

5. When prompted, click "Finish."



Note: You will be required to restart your computer after completing installation.

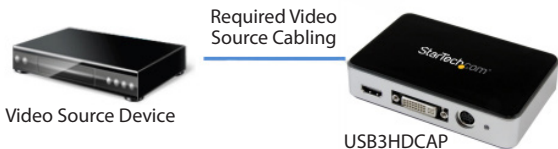
Hardware Installation

Note: Please ensure the Software Installation steps have been completed prior to beginning Hardware Installation steps.

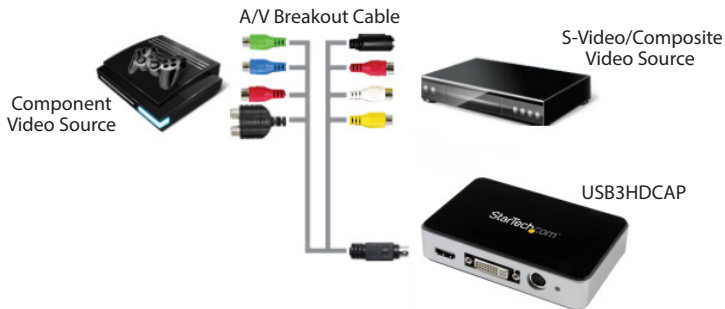
1. Using the included USB 3.0 cable, connect the USB3HDCAP to an available USB 3.0 port on your computer system.



2. Using the required video source cabling (not included) connect your video source (DVD, DVR, VCR, Etc.) to the USB3HDCAP.



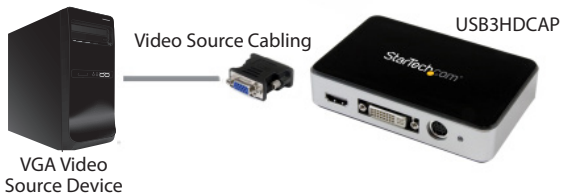
- a. If your video source is Component, S-Video, or Composite, use the included A/V breakout cable to connect your Audio/Video source cabling to the A/V breakout cable input port on the USB3HDCAP. Please see Product Diagram on Page 1 for reference.



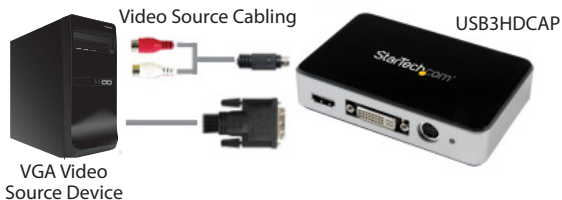
- b. If your video source is HDMI or DVI, connect your audio/video source cabling directly to the HDMI audio/video input port or DVI video input port (respectively) on the USB3HDCAP.



- c. If your video source is VGA, use the included DVI to VGA video adapter to connect your VGA video source cabling to the DVI video input port on the USB3HDCAP (Please see the diagram on the next page for reference).



- d. (Optional) If you would like to capture a 2-channel RCA audio source along with your video source, connect your RCA audio source cable to the A/V breakout cable input port on the USB3HDCAP along with your desired video source cabling.



Hardware installation is now complete.

Software Operation

1. Upon starting Windows, if the "Found New Hardware" wizard appears on the screen, cancel/close the window and insert the included Driver CD into the computer's CD/DVD drive.
2. AutoPlay should automatically prompt you to run the Setup application file (Setup.exe). If not, open "My Computer" and double-click on the CD/DVD drive. Double-click the Setup Application (Setup.exe) icon.
3. Proceed through the Installation wizard.
4. Complete the wizard and this should automatically install all necessary driver software. An icon for "StreamCatcher" should now be on your desktop.

How to Use

Connect the audio/video source to the video capture card using the appropriate cable(s). To connect a VGA source, use the included DVI to VGA adapter. If you wish to input audio from a source other than HDMI, make sure to connect the breakout cable and connect the audio source using stereo RCA cables (red/white).

Stream Catcher

Launch Application

Double-click the "StreamCatcher" icon on the desktop to launch the video capture application. This will bring up the main menu screen that contains the video preview window and recording controls. Additional options and configurations can be accessed through the Main Menu (Please see Main Menu Illustration on Page 9).



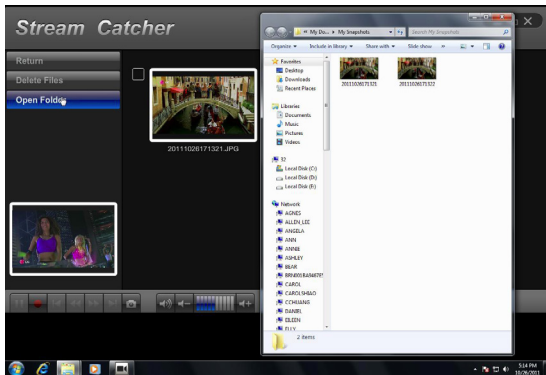
Initial Setup Note: If you have a video source connected but are not able to view anything in the video window, go to the "Settings" section first to make sure the device is configured properly. If using an HDCP-protected video source (i.e. retail Blu-Ray movie), this will also result in the video preview/capture window not being visible.



Manually recording video can be done by simply pressing the “Record” button from the control menu along the bottom of the Stream Catcher window. The frame around the video window will turn red while recording. When you would like to stop recording, press the “Stop” button. The “Snapshot” button allow you to take screen capture of the video stream.

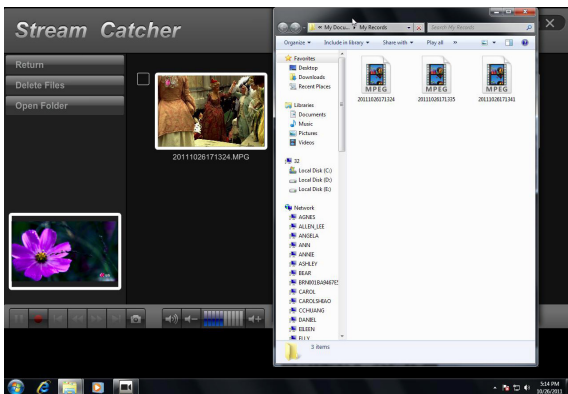
Snapshot Files

Clicking this button will open the folder location where all of the snapshot files are saved in Windows.



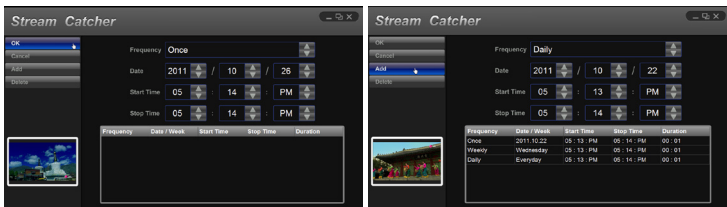
Record Files

Clicking this button will open the folder location where all of the recorded video files are saved in Windows.



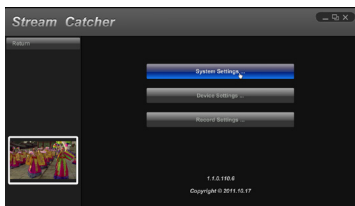
Schedule Recording

The software can be set up to start recording at a specific date and time. Also, you can set this automatic recording option to occur once or multiple times. Set up the schedule and click the "Add" button to save it. Multiple schedules can be maintained at the same time. To remove a schedule, simply select it from the list and click the "Delete" button.



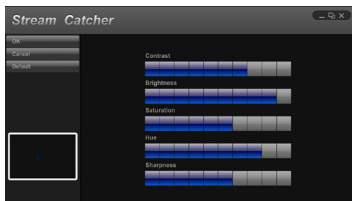
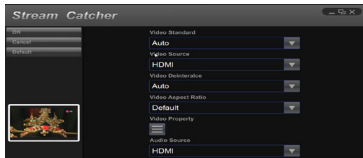
Settings

The Settings menu is broken into different sections for configuring various aspects of the software. System Settings contains configuration options for the user interface.



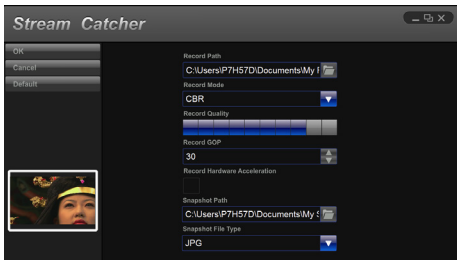
Device Settings

The Device Settings contains configuration options for the video capture hardware. Video and audio input source (HDMI, component, DVI/VGA), video system (NTSC/PAL), aspect ratio and video properties (sharpness, contrast, saturation, hue, brightness) can all be adjusted from this menu.



Record Settings

Contains settings related to video recording and snapshots. The location to save recorded video files as well as recording quality can be configured. The location to save the snapshot images and file format (JPG, BMP) is also set here.



Video Streaming

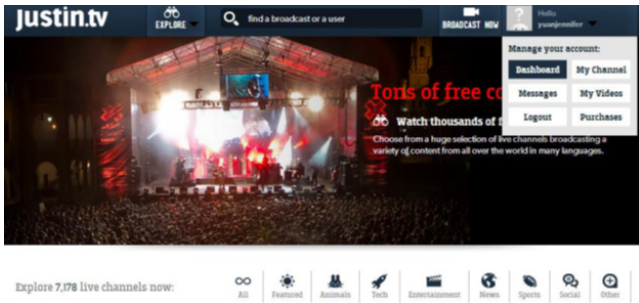
Streaming using RTMP Streaming Service Provider

1. Obtain the RTMP settings for your video streaming service. The below steps show how to obtain these settings from Justin.TV and Twitch.

Note: Steps may vary from different streaming service providers. Please contact your service provider for specific details.

For Justin.tv

1. Open your web browser and browse to the following website:
<http://www.justin.tv>
2. Log in and select “Dashboard” from “Manage your account.”



3. Select “My Channel” from the left side menu, followed by “INFO.”

justin.tv

EXPLORE find a broadcast or a user BROADCAST NOW Hello yourprofile

My Guide
Messages
My Account
My Channel
INFO
CHAT
DESIGN
MEMBERS
My Purchases
API

Channel Title:

Channel Description: (140 characters max)

140 characters remaining

About Me:
Use this space to elaborate on your channel description. Flash and HTML are acceptable, Javascript and frames will be removed.

4. In the lower section of this page, you will find “Stream Key: Show.” Click “Show” and the Stream Key will appear.

Embed Code:

Chat Embed Code:

Stream Key: Show

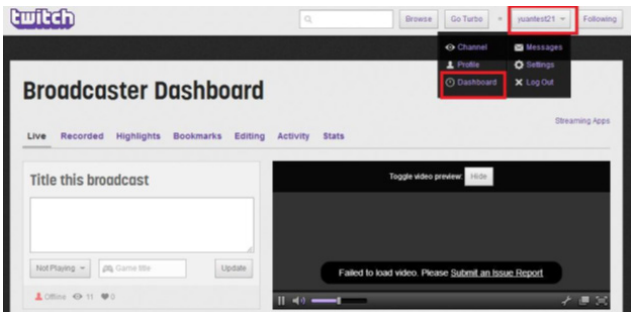
Stream Key: **RESET** **HIDE**

For Twitch

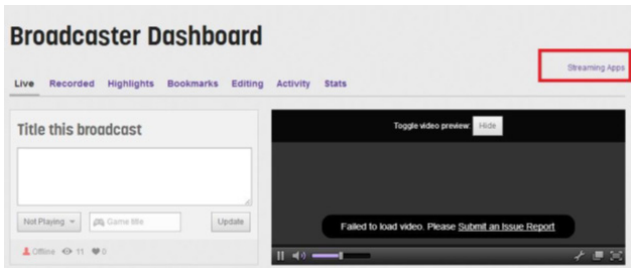
1. a) Open your web browser and browse to the following website:

<http://www.Twitch.tv>

b) Log in and select “Dashboard” from your account drop down menu.



c) In the top right select “Streaming Apps.”



d) Click the “Show Key” button and the key will appear.

The screenshot shows the Twitch website interface. At the top left is the Twitch logo. To its right is a search bar and navigation buttons: "Browse", "Go Turbo", a user profile dropdown for "yuanter21", and "Following". The main content area has the heading "Broadcast while you play". Below this is a paragraph: "The applications and methods listed on this page are the most common tools for broadcasting your games. For a more in-depth exploration of optimization or help with troubleshooting, visit the Support Center." Below that is another paragraph: "To use the applications listed on this page you may need your stream key. Anyone can use this key to broadcast to your channel so do not to show it on video." To the right of this paragraph is a button labeled "Show Key" which is highlighted with a red rectangular box. Below the text are three software options, each with an icon, a title, a brief description, and a "Download" button. 1. XSplit: Icon of a play button and the text "XSplit" with the tagline "GAMES LIVE IS SIMPLE!". Description: "Optimized for and used by gamers all over the world, XSplit is the most straight-forward way to get your gameplay online in minutes." 2. Wirecast: Icon of a glowing sphere on a base. Description: "Professional live production software available for \$495. Has support for multiple cameras, additional media, chroma key, titles, transitions and much more." 3. Flash Media Encoder: Icon of a red DVD case. Description: "When high-quality streaming is your priority, the rugged and free Adobe® Flash® Media Live Encoder can help you stream from just about any source." Below the "Download" button for Flash Media Encoder are two smaller buttons: "Config" and "Version 3.0".

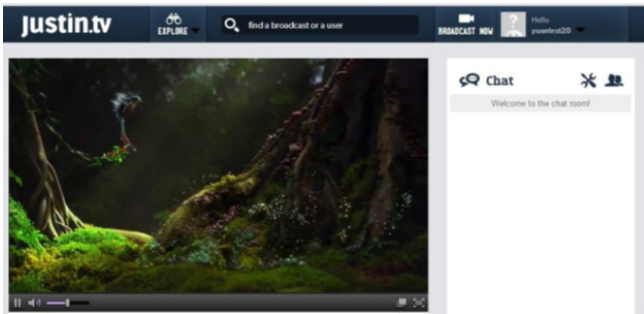
2. Open the Steam Catcher Program and then select RTMP.
Note: RTMP (Real Time Messaging Protocol) is a standard for streaming audio/video over the Internet.
3. Obtaining the streaming URL from your streaming service provider.
Note: This is specific to your service provider and will likely contain the key located in Step 1.
4. In the field marked "Streaming Public URL," type the public URL for your streaming service followed by your stream key.
Note: This will be specific to your service. In the example below we are using Justin.tv. The Justin.tv URL is comprised of "rtmp://live.justin.tv/app/" followed by your stream key.



5. Return to the screen catcher home page and click the blue record dot (pictured below).



6. The video will now be streamed to your streaming service.



Streaming with HLS using AppServ

1. Download and install AppServ from the following URL:

<http://www.appservnetwork.com/>

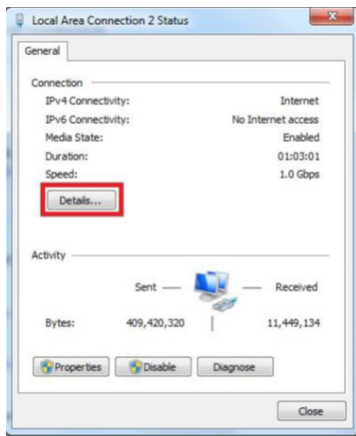
2. Locate your IP address.

Windows 8

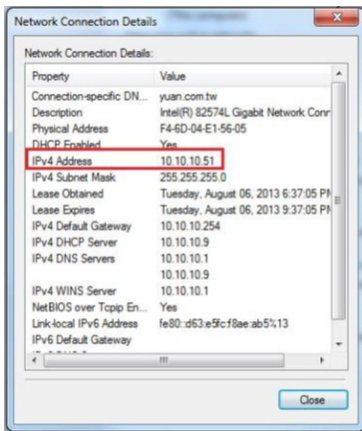
- a) Open Control Panel
- b) Click Network and Sharing Center
- c) Click Local Area Connection 2



- d) Click the Details button

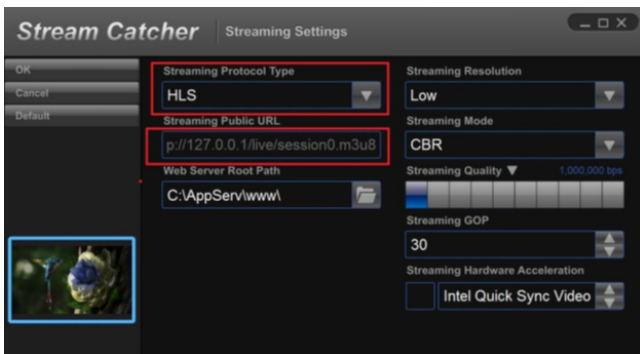


e) Your IP Address is displayed.



Note: Steps for obtaining IP address will vary for different operating systems. Please contact your system administrator for further details.

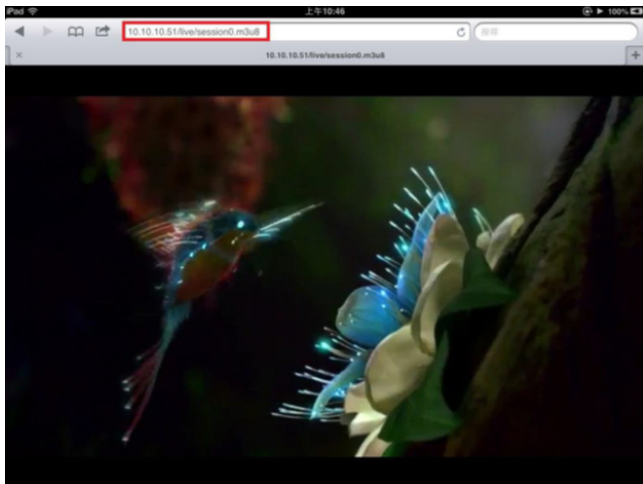
3. Open the Steam Catcher Program and then select HLS.
4. In the Streaming Public URL, type your IP address followed by, "/live/session0.m3u8."



5. Return to the screen catcher home page and click the blue record dot (pictured below).



6. Using a different device on your network (Tablet, laptop, etc.) open the web browser and then type the full URL used in Step 5. The URL is built using your computer IP address with, “/live/session0.m3u8” added at the end.



Technical Support

StarTech.com's lifetime technical support is an integral part of our commitment to provide industry-leading solutions. If you ever need help with your product, visit www.startech.com/support and access our comprehensive selection of online tools, documentation, and downloads.

For the latest drivers/software, please visit www.startech.com/downloads

Warranty Information

This product is backed by a two year warranty.

In addition, StarTech.com warrants its products against defects in materials and workmanship for the periods noted, following the initial date of purchase. During this period, the products may be returned for repair, or replacement with equivalent products at our discretion. The warranty covers parts and labor costs only. StarTech.com does not warrant its products from defects or damages arising from misuse, abuse, alteration, or normal wear and tear.

Limitation of Liability

In no event shall the liability of StarTech.com Ltd. and StarTech.com USA LLP (or their officers, directors, employees or agents) for any damages (whether direct or indirect, special, punitive, incidental, consequential, or otherwise), loss of profits, loss of business, or any pecuniary loss, arising out of or related to the use of the product exceed the actual price paid for the product. Some states do not allow the exclusion or limitation of incidental or consequential damages. If such laws apply, the limitations or exclusions contained in this statement may not apply to you.

Hard-to-find made easy. At StarTech.com, that isn't a slogan. It's a promise.

StarTech.com is your one-stop source for every connectivity part you need. From the latest technology to legacy products — and all the parts that bridge the old and new — we can help you find the parts that connect your solutions.

We make it easy to locate the parts, and we quickly deliver them wherever they need to go. Just talk to one of our tech advisors or visit our website. You'll be connected to the products you need in no time.

Visit www.startech.com for complete information on all StarTech.com products and to access exclusive resources and time-saving tools.

StarTech.com is an ISO 9001 Registered manufacturer of connectivity and technology parts. StarTech.com was founded in 1985 and has operations in the United States, Canada, the United Kingdom and Taiwan servicing a worldwide market.