



PRO-BLADE™ ECOSYSTEM

User Manual



ACCESSING SUPPORT

- For online technical support visit sandiskprofessional.com/support
- To speak with technical support visit:
sandisk.com/about/contact/customer-care

Contents

Accessing Support.....	i

1 Welcome to the PRO-BLADE Family.....	1

Handling Precautions.....	1
Operating System Compatibility.....	1

2 PRO-BLADE SSD Mag.....	2

Key Features.....	2
What's in the Box	2
PRO-BLADE SSD Mag Product Notes.....	2
Connecting a PRO-BLADE SSD Mag.....	3
Inserting a PRO-BLADE SSD Mag.....	3

3 PRO-BLADE TRANSPORT.....	4

Key Features.....	4
What's in the Box.....	4
Connectivity.....	5
Front LED.....	5
Connecting the PRO-BLADE TRANSPORT.....	6
How to Connect the PRO-BLADE TRANSPORT.....	6
Inserting the PRO-BLADE SSD Mag into the TRANSPORT.....	6
Inserting the PRO-BLADE SSD Mag.....	7
Removing the PRO-BLADE SSD Mag.....	7

4 PRO-BLADE STATION.....	8

Key Features.....	8
What's in the Box.....	8
Front Panel.....	8
Front LED.....	9
Rear Connectivity.....	10
Side Anchors.....	10
Connecting the PRO-BLADE STATION.....	11
How to Connect a PRO-BLADE STATION.....	11
Connecting the PRO-BLADE SSD Mag and PRO-BLADE STATION.....	12
Inserting the PRO-BLADE SSD Mag into the STATION.....	12

Removing the PRO-BLADE SSD Mag from the STATION..... 12

5 Important Information..... 13

Safety Instructions..... 13
Obtaining Service..... 13
Limited Warranty - Except Australia.....13
Limited Warranty - Australia..... 14
Regulatory Compliance..... 15
 Regulatory Compliance - FCC.....15
 Regulatory Compliance - Canada..... 15
 Safety Compliance - US and Canada.....16
 Regulatory Compliance - CE..... 16
 Regulatory Compliance - Austria..... 16
 Regulatory Compliance - Japan..... 16
 Regulatory Compliance - Korea..... 17
 Regulatory Compliance - China..... 17
 Regulatory Compliance - Taiwan.....17

Index..... 19

1

WELCOME TO THE PRO-BLADE FAMILY

Unlock exceptional SSD performance and versatility with the new SanDisk® Professional PRO-BLADE™ SSD ecosystem. Effortlessly transfer, copy, and edit footage with the powerfully interchangeable PRO-BLADE SSD mag. Pack less bulk when you carry multiple lightweight mags, each available in capacities up to 4TB*. Load the SSD mag into the portable PRO-BLADE TRANSPORT enclosure for transfer speeds up to 2000MB/s** and up to four SSD mags into the PRO-BLADE STATION desktop enclosure for superfast speeds up to 3000MB/s** so you can build upon your most versatile media workflow yet.***

HANDLING PRECAUTIONS

SanDisk Professional products are precision instruments and must be handled with care. It may be damaged by rough handling, shock, or vibration. Always observe the following safety precautions:

- Avoid touching the SanDisk Professional device's connector.
- Do not block any of the enclosure's ventilation slots.
- Do not use this product as a portable device, except where notified by manufacturer.
- Handle the SanDisk Professional device using its edge or frame.
- Do not remove, damage, or cover any device labels.
- Ensure the SanDisk Professional device does not exceed maximum operating temperature.
- Exercise caution when handling a SanDisk Professional device as the SanDisk Professional device may have heated up.

OPERATING SYSTEM COMPATIBILITY

The SanDisk Professional PRO-BLADE system is compatible with Windows® 10+ and macOS 10.15+.

PRO-BLADE SSD MAG

Effortlessly transfer, copy, and edit footage with the powerfully interchangeable and portable PRO-BLADE SSD mag. Pack less bulk when you carry multiple mags and load them into a single portable PRO-BLADE TRANSPORT enclosure or PRO-BLADE STATION desktop enclosure.***

KEY FEATURES

Innovative Modular SSD Ecosystem—Tap into the exceptionally versatile SSD ecosystem powered by the ultra-interchangeable PRO-BLADE SSD mag.

Scale as Much as You Need—The PRO-BLADE modular SSD ecosystem enables you to scale up and transport as many terabytes as you need without dealing with bulky gear.

Seamless Portability with the PRO-BLADE TRANSPORT—Pair with the portable PRO-BLADE TRANSPORT enclosure*** for super-fast transfer speeds up to 2000MB/s** and seamless storage access when swapping mags on the go.

Scale Upward with PRO-BLADE STATION—Stack up to 16TB* of capacity total when you load four PRO-BLADE SSD mag devices into the PRO-BLADE STATION desktop enclosure*** for simultaneous offloading at incredible speeds up to 3000MB/s**.

Amplify Your Carrying Capacity—Carry more capacity with less bulk when you pack multiple ultra-compact PRO-BLADE SSD mag devices to load into the PRO-BLADE TRANSPORT or PRO-BLADE STATION.***

Encased in Aluminum—Each PRO-BLADE SSD mag is encased in a cool aluminum exterior to help sustain superfast speeds during heavier usage.

WHAT'S IN THE BOX

- SanDisk Professional PRO-BLADE SSD mag
- Quick Start Guide

PRO-BLADE SSD MAG PRODUCT NOTES

Reference illustration 2.1 below.

1. **PRO-BLADE Interface**—Connects to a compatible device or enclosure with a PRO-BLADE SSD mag slot.
2. **PRO-BLADE SSD Mag Project Notes**—Use this section to write your project name or notes. **DO NOT** place a sticker or label in this area as it will cause issues when inserting/removing the SSD mag from the PRO-BLADE TRANSPORT.

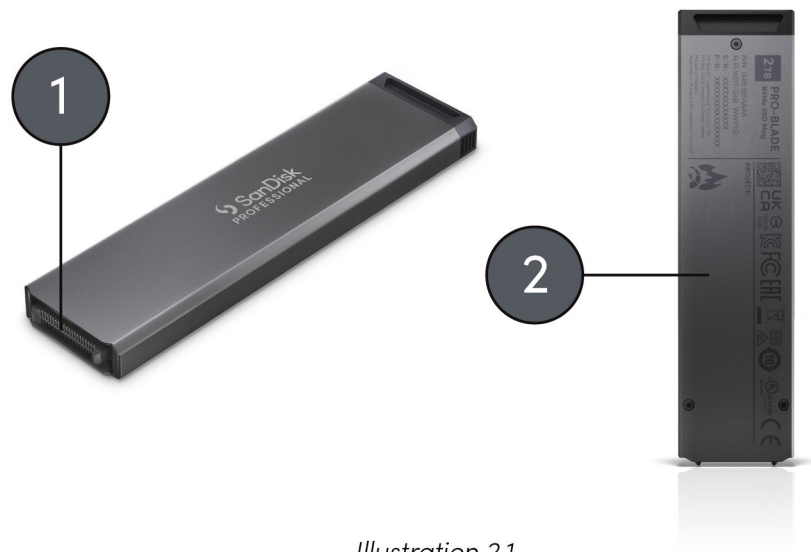


Illustration 2.1

CONNECTING A PRO-BLADE SSD MAG

Inserting a PRO-BLADE SSD Mag

To insert a PRO-BLADE SSD mag into a compatible device, make sure the notched corners on both devices are aligned with each other, and follow these steps:

1. Align the PRO-BLADE SSD mag to a slot on a compatible device.
2. Slide the PRO-BLADE SSD mag into the compatible device until firmly seated.

3

PRO-BLADE TRANSPORT

Get the ultimate lightweight portable SSD when you pair the powerfully interchangeable SanDisk Professional PRO-BLADE SSD mag with the SanDisk Professional portable PRO-BLADE TRANSPORT enclosure.*** The PRO-BLADE TRANSPORT enclosure enables you to load and swap PRO-BLADE SSD mag devices for seamless storage access so that you can carry more capacity with less bulk.

KEY FEATURES

Assemble Your Ultimate Workflow SSD—Load the PRO-BLADE TRANSPORT enclosure with a PRO-BLADE SSD mag*** in capacities up to 4TB* for a superfast portable SSD delivering USB-C™ (20Gbps) transfer speeds up to 2000MB/s** read and write.

Innovative Modular SSD Ecosystem—Tap into the exceptionally versatile SSD ecosystem that lets you easily swap out PRO-BLADE SSD mags to scale the storage you need, whether you're in the studio or on location.

Ultra-rugged Portability with the PRO-BLADE SSD Mag—The PRO-BLADE SSD mag delivers up to 3m drop and 4,000lbs crush resistance¹ for on-the-go reliability.

Amplify Your Carrying Capacity—Carry as many terabytes as you need without the bulky gear when you pack multiple lightweight PRO-BLADE SSD mags to load into the PRO-BLADE TRANSPORT for the ultimate portable workflow.

Sustains its Cool Under Pressure—The PRO-BLADE TRANSPORT enclosure features a cooling aluminum heat sink to help sustain superfast transfer speeds through more demanding workflows.

Get Longer Takes and Faster Offloads—Attach a PRO-BLADE TRANSPORT enclosure to your USB-C compatible camera rig for high-res recording directly onto the loaded PRO-BLADE SSD mag. Simply swap between SSD mags to keep rolling without interruption.

WHAT'S IN THE BOX

The SanDisk Professional PRO-BLADE TRANSPORT comes in two configurations. One includes a PRO-BLADE SSD mag device, and the other does not include a PRO-BLADE SSD mag device. Therefore, the kit contents of your purchase will vary as outlined below.

With PRO-BLADE SSD Mag Included

- SanDisk Professional PRO-BLADE TRANSPORT

¹ On a carpeted concrete floor.

- SanDisk Professional PRO-BLADE SSD mag
- USB-C 20Gbps Cable (WD Part Number: M032-000044)
- Quick Start Guide

Without PRO-BLADE SSD Mag

- SanDisk Professional PRO-BLADE TRANSPORT
- USB-C 20Gbps Cable (WD Part Number: M032-000044)
- Quick Start Guide

Note: Use only the included cable with your PRO-BLADE TRANSPORT.

CONNECTIVITY

Reference illustration 3.1 below.

1. **PRO-BLADE TRANSPORT LED**—LED light indicates when the PRO-BLADE SSD mag is in use.
2. **PRO-BLADE SSD Mag Slot**—Insert your PRO-BLADE SSD mag into this slot.
3. **USB-C Port**—This is used to connect the PRO-BLADE TRANSPORT to a host computer.

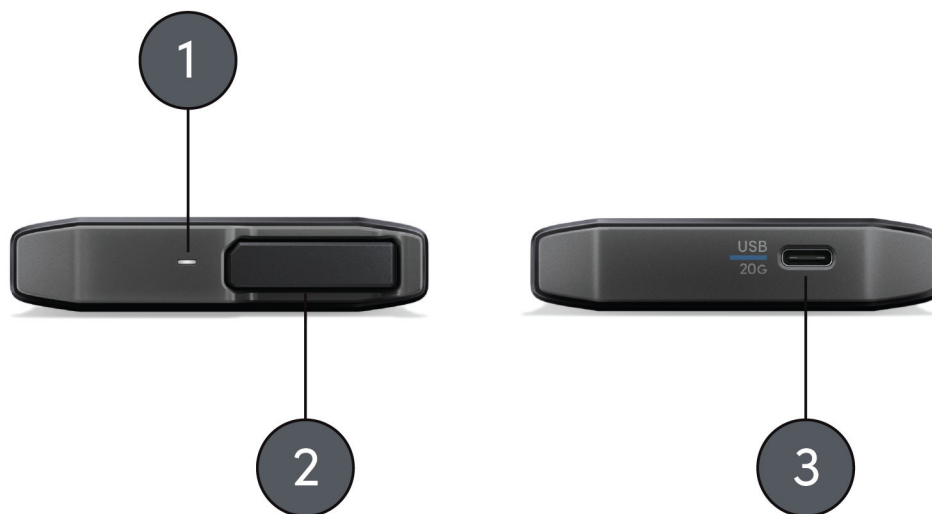


Illustration 3.1

FRONT LED

When active, the front LED on the device will illuminate as a white light. A "Device Condition" list for the PRO-BLADE TRANSPORT LED is outlined below.

TRANSPORT LED Behavior	System Condition
Off	Device is disconnected from the host computer or no PRO-BLADE SSD mag is inserted.

TRANSPORT LED Behavior	System Condition
On	The device is connected to a host computer and a PRO-BLADE SSD mag is inserted.
Flashing	Activity on the PRO-BLADE SSD mag device.

CONNECTING THE PRO-BLADE TRANSPORT

Before you begin, make sure your computer system is turned on with your operating system fully loaded and ready for hardware and software installation. Then continue with these steps.

How to Connect the PRO-BLADE TRANSPORT

1. Ensure that a PRO-BLADE SSD mag is fully inserted in the PRO-BLADE TRANSPORT.
2. Connect the SanDisk Professional PRO-BLADE TRANSPORT device to your computer system with the included USB-C cable using the connector (marked in **blue**) labeled **USB 20G**.
3. Congratulations! The SanDisk Professional PRO-BLADE TRANSPORT is now ready to use.

The PRO-BLADE SSD mag is pre-formatted with the APFS file system for macOS. If you want to use this device with a computer using the Windows operating system, you will need to reformat the PRO-BLADE SSD mag device. See Knowledge Base Article: [30566](#).

INSERTING THE PRO-BLADE SSD MAG INTO THE TRANSPORT

To insert or remove a PRO-BLADE SSD mag into the PRO-BLADE TRANSPORT, follow the instructions below and use illustration 2.3 as a reference.

1. PRO-BLADE SSD mag
2. PRO-BLADE TRANSPORT

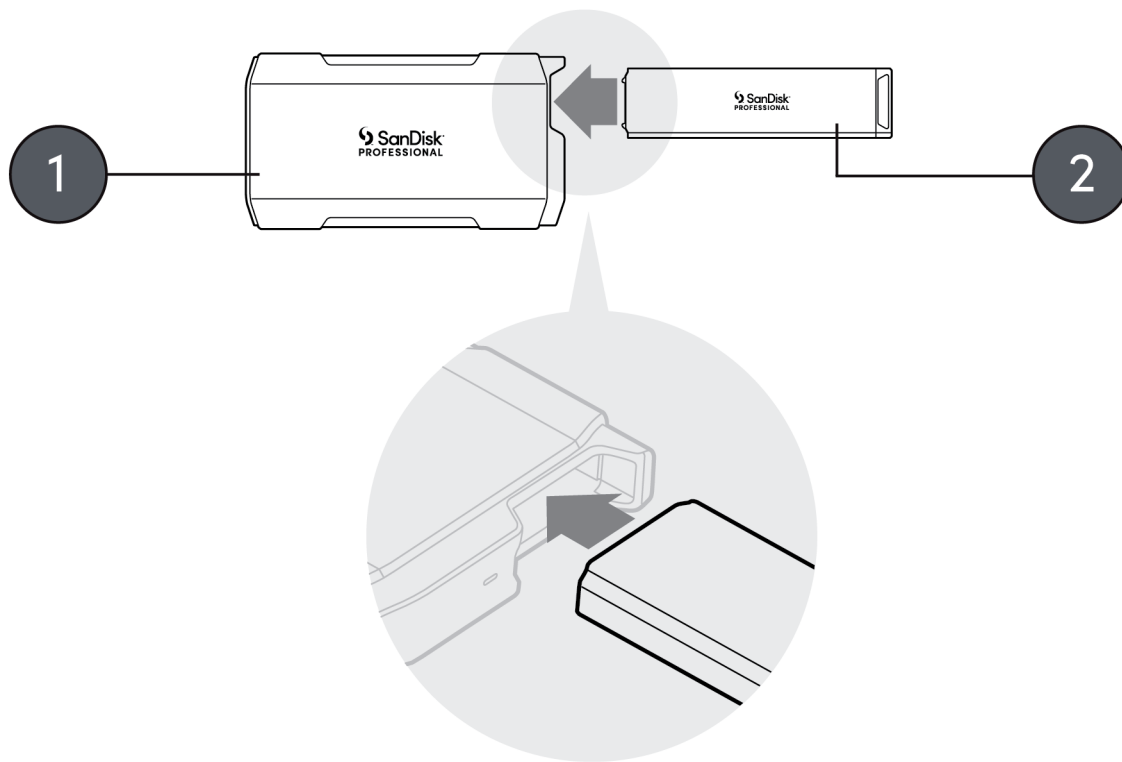


Illustration 3.2

NOTE: PRO-BLADE SSD mag is included with the PRO-BLADE TRANSPORT for 1TB+ capacities. PRO-BLADE TRANSPORT [0TB] and additional SSD mags sold separately.

Inserting the PRO-BLADE SSD Mag

To insert a PRO-BLADE SSD mag into the PRO-BLADE TRANSPORT, follow these steps.

1. Align the PRO-BLADE SSD mag to a slot on the PRO-BLADE TRANSPORT.
2. Slide the PRO-BLADE SSD mag into the PRO-BLADE STATION slot until firmly seated.

Removing the PRO-BLADE SSD Mag

To remove the PRO-BLADE SSD mag from the PRO-BLADE TRANSPORT, grasp the PRO-BLADE SSD mag with one hand, grasp the PRO-BLADE TRANSPORT with your other hand, and pull the PRO-BLADE SSD mag out of the PRO-BLADE TRANSPORT.

4

PRO-BLADE STATION

Save time using PRO-BLADE STATION in your workflow where you need high throughput. Utilize the 4 modular SSD mag slots to edit, copy, and move massive amounts of data quickly with transfer speeds up to 3000MB/s**. Take on your most demanding projects yet and avoid downtime waiting for transfers by simply moving PRO-BLADE SSD mags between desktop and portable utilizing PRO-BLADE TRANSPORT***. Versatile SSD modularity lets you create a customized setup for each project.

KEY FEATURES

Ultra-Fast—Thunderbolt™ 3 speed with transfers up to 3000MB/s**.

Multi-Bay—4 hot-pluggable, high-speed SSD mag slots.

Avoid Downtime—Instead of waiting on transfers simply move PRO-BLADE SSD mags between desktop and portable utilizing PRO-BLADE TRANSPORT***.

Versatile—Modularity lets you create a customized setup for each project.

Active Cooling—Thermal management to help SSDs maintain high performance.

WHAT'S IN THE BOX

- SanDisk Professional PRO-BLADE STATION
- Thunderbolt 3 Cable (WD Part Number: M032-000043)
- USB-C Power Cable (WD Part Number: M032-000042)
- USB-C Power Adapter
- Quick Start Guide

Note: Use only the included cables and power adapter with your PRO-BLADE STATION.

FRONT PANEL

Reference illustration 4.1 below.

1. **PRO-BLADE SSD Mag Slot LEDs**—LED light indicates when the PRO-BLADE SSD mag is in use.
2. **PRO-BLADE STATION LED**—LED light indicates when the PRO-BLADE STATION is in use.
3. **PRO-BLADE SSD Mag Slots**—Connect your PRO-BLADE SSD mag into these slots.

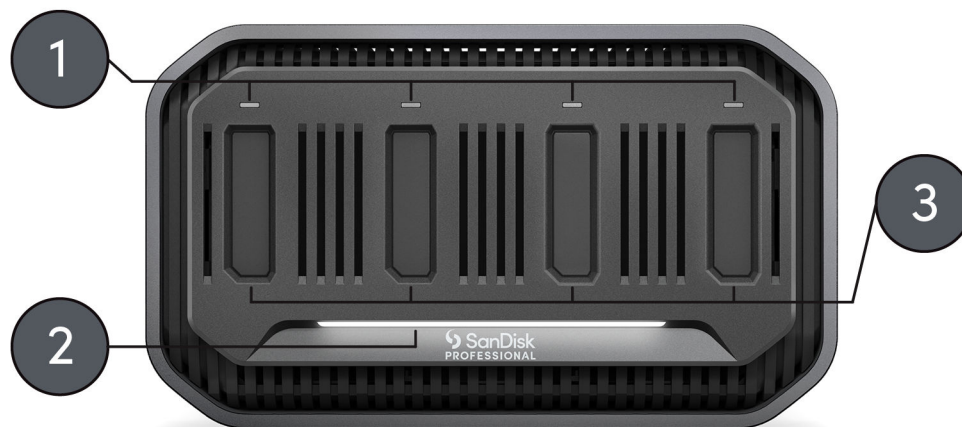


Illustration 4.1

FRONT LED

When active, the front LED on the device will illuminate as a white light. There is a single LED for PRO-BLADE STATION activity, plus individual LED lights for each PRO-BLADE SSD mag slot activity. The LED is either on, off, or blinks with a certain rhythm to indicate a specific "System Condition". An LED "System Condition" list for the PRO-BLADE STATION and the PRO-BLADE SSD mag are outlined below.

STATION LED Behavior	System Condition
Off	Power is Off or disconnected.
On	The PRO-BLADE STATION is powered On.
On, then turns Off after several minutes.	The PRO-BLADE STATION turns Off due to inactivity, or because it is not connected to a host.
Fast Breathing Rhythm	The PRO-BLADE STATION is overheating or at fault.
Mag Slot LED Behavior	System Condition
Off	The PRO-BLADE SSD mag is not connected or the PRO-BLADE STATION is powered Off.
On	The PRO-BLADE SSD mag is connected to the PRO-BLADE STATION and the device is powered On.
Flashing	Activity on the PRO-BLADE SSD mag device.
Fast Breathing Rhythm	The PRO-BLADE SSD mag is overheating, or at fault.

REAR CONNECTIVITY

Reference illustration 4.2 below.

1. **Power Button**—Press and hold for 2 seconds to power on or off the PRO-BLADE STATION.
2. **USB-C Power In Port**—This is used to connect the PRO-BLADE STATION to a power source. Use only the included power cable, WD Part Number: M032-000042.
3. **Thunderbolt 3 Host Port**—This port can be used to connect the SanDisk Professional PRO-BLADE STATION to your host computer. Use only the included data cable, WD Part Number: M032-000043.
4. **Thunderbolt 3 Port**—This port supports the following protocols: Thunderbolt 3, DisplayPort 1.4, and SuperSpeed USB 10Gbps. This port provides up to 15-watts of power to connected devices and can be used to daisy chain up to six Thunderbolt 3 devices with a Thunderbolt 3 cable.
5. **Kensington® Security Slot**—For device security, the device is equipped with a security slot that supports a standard Kensington security cable. Visit <http://www.kensington.com/> for more information..

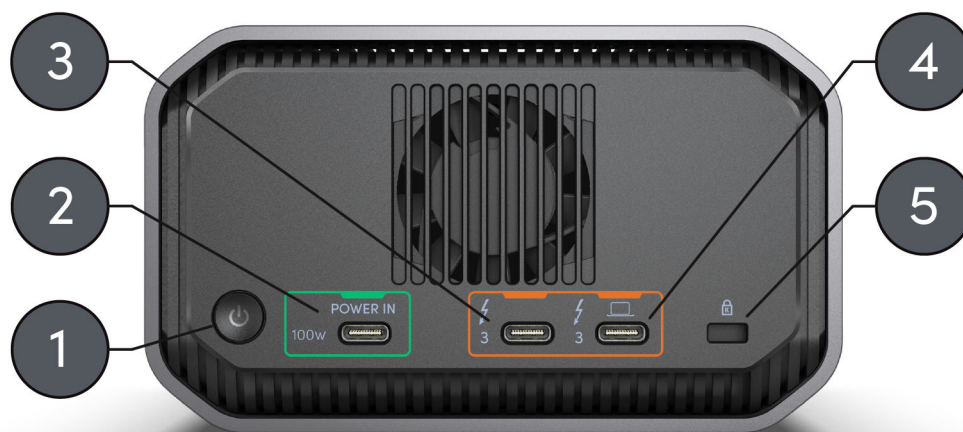


Illustration 4.2

SIDE ANCHORS

Reference illustration 4.3 below.

1. **Aluminum Enclosure**
2. **Anchor Points for Custom Mounting & Accessories**—These bolts may be removed to access the PRO-BLADE STATION's anchor points. These anchor points are designed to be used for custom mounting, such as attaching your SanDisk Professional PRO-BLADE STATION to a DIT cart inside a rack, a "cheese plate", adding a handle, or even an SSD holder.

NOTE: Existing screws are not designed for attaching accessories or anchoring. Anchor screws not included. Anchor points will accept a ¼"-20 screw. The screw length will vary based on the type of mount.



Illustration 4.3

CONNECTING THE PRO-BLADE STATION

Before you begin, make sure your computer system is turned on with your operating system fully loaded and ready for hardware and software installation. Then continue with the following steps.

How to Connect a PRO-BLADE STATION

Use the following information to successfully connect a PRO-BLADE STATION device to a host computer.

CAUTION: Use only the included 100-watt power adapter with the accompanying power connector appropriate for your region to power on the PRO-BLADE STATION device.

NOTE: The power cable and Thunderbolt 3 cable are each identified with a unique color to correspond with the appropriate ports on the PRO-BLADE STATION device.

1. When you remove the power adapter from the box, locate your region's power connector. If it is not already installed on the power adapter, remove the attached power connector, and attach the one appropriate for your region.
2. Connect the included power cable (marked **green**) to your PRO-BLADE STATION and the power adapter. Then connect the power adapter to a power source and the device will power on automatically.
3. Connect the PRO-BLADE STATION device to your computer system with the included Thunderbolt 3 cable (marked **orange**).
4. Congratulations! The PRO-BLADE STATION is now ready to use.

Register your SanDisk Professional PRO-BLADE STATION at sandiskprofessional.com/support

CONNECTING THE PRO-BLADE SSD MAG AND PRO-BLADE STATION

Inserting the PRO-BLADE SSD Mag into the STATION

To insert or remove a PRO-BLADE SSD mag into the PRO-BLADE STATION, follow the instructions below and use illustration 2.2 as a reference.

1. PRO-BLADE SSD mag slot
2. PRO-BLADE SSD mag

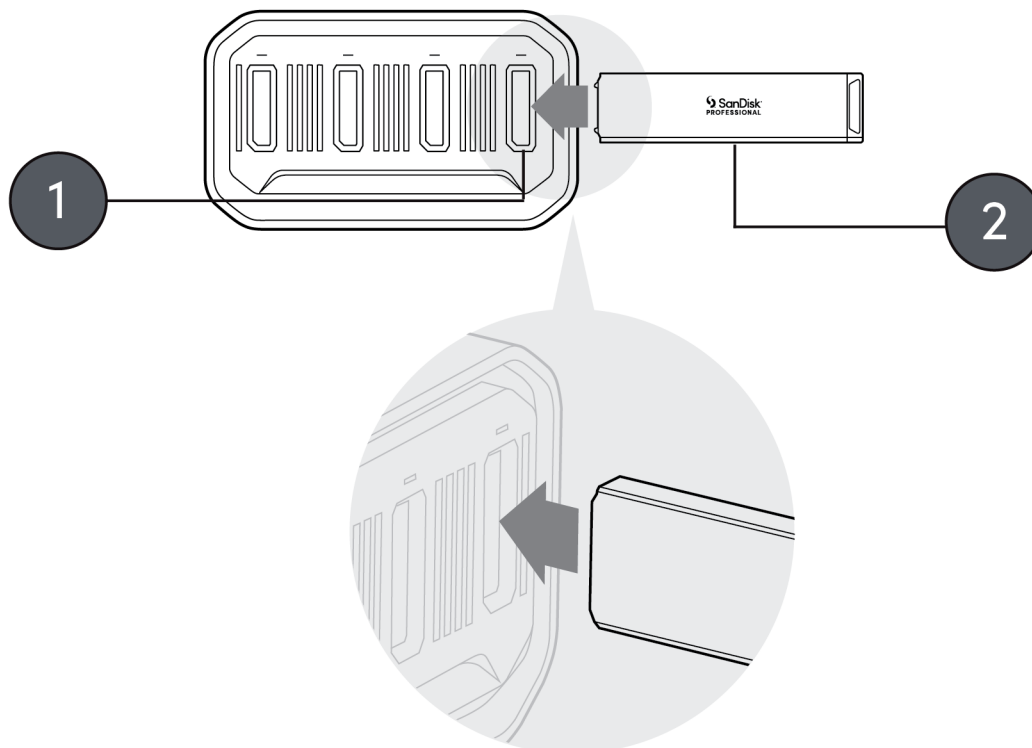


Illustration 4.4

NOTE: PRO-BLADE SSD mag is not included with the PRO-BLADE STATION (sold separately).

Removing the PRO-BLADE SSD Mag from the STATION

To remove the PRO-BLADE SSD mag from the PRO-BLADE STATION, grasp the PRO-BLADE SSD mag and pull it out of the PRO-BLADE STATION.

5

IMPORTANT INFORMATION

[Safety Instructions](#)

[Limited Warranty – Australia](#)

[Obtaining Service](#)

[Regulatory Compliance](#)

[Limited Warranty – Except Australia](#)

STOP! IMPORTANT INFORMATION.

READ THE FOLLOWING CAREFULLY BEFORE USING THIS PRODUCT. KEEP THESE INSTRUCTIONS FOR FUTURE REFERENCE.

SAFETY INSTRUCTIONS

Additional Safety Instructions:

Keep the SanDisk Professional device away from direct sunlight, moisture, and temperature extremes. Do not bend, flex, or drop your SanDisk Professional device. The user is responsible for complying with all environmental, safety, and other usage specifications.

Keep the SanDisk Professional device away from sinks, drinks, bathtubs, showers, rain, and other sources of moisture. Moisture can cause electric shocks with any electronic device. Do not disassemble, crush, short circuit, or incinerate the SanDisk Professional device as it may cause fire, injury, burns, or other hazards.

Disposal Instructions:

Do not dispose of the SanDisk Professional device with unsorted waste. Improper disposal may be harmful to the environment and human health. Please refer to your local waste authority for information on return and collection systems in your area.

OBTAINING SERVICE

SanDisk Professional values your business and always attempts to provide you the very best of service. Should you encounter any problem, please give us an opportunity to address it before returning this Product. Most technical support questions can be answered through our knowledge base or e-mail support service at <http://www.sandiskprofessional.com/support>.

LIMITED WARRANTY – EXCEPT AUSTRALIA

Warranty Information

This SanDisk Professional device is covered by a 5-year limited warranty (or 5-year warranty in regions not recognizing “limited”) from the date

of purchase, subject to the applicable warranty terms and conditions, as defined in www.sandisk.com/wug.

How to Make a Warranty Claim

Please go to www.sandiskprofessional.com and select “support” for more information on making a warranty claim (SanDisk Professional Support Page).

If it is determined that your product may be defective, you will receive an RMA and product return instructions. You are responsible for any expenses associated with a claim under SanDisk Professional’s Limited Warranty.

You must send your product in a secure, prepaid package, to the address provided with your RMA number. Proof of purchase is required for all warranty claims.

LIMITED WARRANTY - AUSTRALIA

Warranty Information

SanDisk Professional warrants to the end user, that this product, excluding content and or software supplied with or on the product, will be free from material defects in manufacture, will conform to SanDisk Professional’s published product specifications and be fit for normal use for a period of 5 years from the date of purchase, provided that the product is legally placed on the market.

When making a claim under this Limited Warranty, SanDisk Professional may at its option repair this product or provide you with an equivalent product; and if unable to repair or replace the product, will refund the purchase price. The full terms of SanDisk Professional’s warranty and warranty period are available at: www.sandisk.com/wug.

Warrantor Details

Western Digital Technologies, Inc., 951 SanDisk Drive, Milpitas, CA 95035, U.S.A.

Tel: 1 (800) 275-4932 (US local toll free) or 1 (310) 449-4599 (US)

How to make a warranty claim:

Before you return the product you must first obtain a Return Material Authorization (RMA) number. Please either:

1. Contact SanDisk Professional at 1 800 262 504 (M-F | 9 am – 6 pm New South Wales Time) or email SanDisk Professional (support@sandiskprofessional.com) and provide proof of purchase (showing date and place of purchase and name of the reseller) and product name, type and number; or
2. Contact the dealer from whom you originally purchased the product.

Please go to www.sandiskprofessional.com/support for more information on making a warranty claim (SanDisk Professional Support Page).

If it is determined that your product may be defective, you will receive an RMA number and product return instructions. You are responsible for any expenses associated with a claim under SanDisk Professional's Limited Warranty. You must send your product in a secure, prepaid package, to the address provided with your RMA number. Proof of purchase is required for all warranty claims.

Australian consumers only:

Notwithstanding the terms of this Limited Warranty, SanDisk Professional's products come with guarantees that cannot be excluded under the Australian Consumer Law. You are entitled to a replacement or refund for a major failure and for compensation for any other reasonably foreseeable loss or damage. You are also entitled to have the products repaired or replaced if the products fail to be of acceptable quality and the failure does not amount to a major failure.

REGULATORY COMPLIANCE

Regulatory Compliance - FCC

FCC CLASS B INFORMATION

NOTE: This device has been tested and found to comply with the limits for a Class B digital device, pursuant to part 15 of the FCC Rules. These limits are designed to provide reasonable protection against harmful interference in a residential installation. This device generates, uses and can radiate radio frequency energy and, if not installed and used in accordance with the instructions, may cause harmful interference to radio communications. However, there is no guarantee that interference will not occur in a particular installation. If this device does cause harmful interference to radio or television reception, which can be determined by turning the device off and on, the user is encouraged to try to correct the interference by one or more of the following measures:

- Reorient or relocate the receiving antenna.
- Increase the separation between the device and receiver.
- Connect the device into an outlet on a circuit different from that to which the receiver is connected.
- Consult the dealer or an experienced radio/TV technician for help.

Any changes or modifications not expressly approved by the manufacturer could void the user's authority to operate the device.

Regulatory Compliance - Canada

Canada ICES-003 (B) / NMB-003 (B) Statement

Cet appareil numérique de la classe B est conforme à la norme NMB-003 (B) du Canada.

This device complies with Canadian ICES-003 (B).

Safety Compliance - US and Canada

Safety Compliance

Approved for US and Canada. CAN/CSA-C22.2 No. 62368-1-14: Audio/Video, Information and Communication Technology Equipment Part 1: Safety Requirements.

This device is only for use with the included cable(s) and compatible cULus Listed AC adaptor

Approuvé pour les Etats-Unis et le Canada. CAN/CSA-C22.2 No. 62368-1-14, Sûreté d'équipement de technologie de l'information.

Cet appareil est uniquement destiné à être utilisé avec le(s) câble(s) inclus et l'adaptateur secteur compatible cULus Listed.

Regulatory Compliance - CE

CE Compliance for Europe

Hereby, Western Digital declares compliance of this equipment to the applicable Council Directives of the European Union, including the EMC Directive (2014/30/EU), the Low Voltage Directive (2014/35/EU) and the RoHS Directive (2011/65/EU) as amended by Directive 2015/863/EU. The full text of the EU declaration of conformity is available at the following internet address: <http://www.wdc.com/products/EUDoC>.

- PO Box 13379, Swords, Co Dublin, Ireland
- PO Box 471, Leatherhead, KT22 2LU, UK

Regulatory Compliance - Austria

CE-Konformität für Europa

Hiermit erklärt Western Digital die Konformität dieses Geräts mit den anwendbaren Richtlinien des Rats der Europäischen Union, einschließlich der Richtlinie 2014/30/EU zur elektromagnetischen Verträglichkeit, der Niederspannungsrichtlinie (2014/35/EU) und der Richtlinie 2011/65/EU zur Beschränkung der Verwendung von gefährlichen Stoffen sowie der Abänderung durch die Richtlinie (EU) 2015/863. Den vollständigen Text der EU-Konformitätserklärung finden Sie unter der folgenden Internetadresse: <http://www.wdc.com/products/EUDoC>.

Geprüfte Sicherheit

Maschinenlärminformations-Verordnung 3. GPSGV: Der höchste Schalldruckpegel beträgt 70 db(A) oder weniger gemäß EN ISO 7779, falls nicht anders gekennzeichnet oder spezifiziert.

Regulatory Compliance - Japan

添付の電源コードは、本製品専用です。

添付の AC アダプターや電源コードは、本製品専用です。

接地接続は必ず，電源プラグを電源につなぐ前に行ってください。また，接地接続を外す場合は，必ず電源プラグを電源から切り離してから行って下さい。

VCCI : この装置は、クラスB 機器です。この装置は、住宅環境で使用することを目的としていますが、この装置がラジオやテレビジョン受信機に近接して使用されると、受信障害を引き起こすことがあります。取扱説明書に従って正しい取り扱いをして下さい。

Regulatory Compliance - Korea

기종별	사용자 안내문
B급 기기 (가정용 정보통신기기)	이 기기는 가정용으로 전자파적합성 기준을 통과했으므로 주거 지역에서는 물론 모든 지역에서 사용할 수 있습니다.

Regulatory Compliance - China

有毒有害物质或元素

部件名称	产品中有毒有害物质或元素的名称及含量					
	铅 (Pb)	汞 (Hg)	镉 (Cd)	六价铬 (Cr (VI))	多溴联苯 (PBB)	多溴二苯醚 (PBDE)
底盘外壳和镜头	○	○	○	○	○	○
减震器	○	○	○	○	○	○
塑料其它部件	○	○	○	○	○	○
组合电缆/电源	X	○	○	○	○	○
金属部件	X	○	○	○	○	○
固态驱动器/硬盘/电路板组合	X	○	○	○	○	○

本表格依据SJ/T 11364-2014的规定编制。
 ○：表示该有害物质在该部件所有均质材料中的含量均在GB/T 26572规定的限量要求以下。
 X：表示该有害物质至少在该部件的某一均质材料中的含量超出GB/T 26572规定的限量要求。
 (在此表中，企业可能需要根据实际情况对标记“X”的项目进行进一步的技术性解释。)

Regulatory Compliance - Taiwan

本裝置通過測試並符合 CNS 15936 (2016) 和 CNS 15598-1 (Safety) 規範。

台灣 WD 地址：

台北市中山區松江路 223 號 17 樓

產品處理防護措施

WD 產品是精密的儀器，將本產品從包裝中取出以及安裝時必須小心處理。處理不當、遭受撞擊或震動都可能使硬碟機受損。將外接儲存產品從包裝中取出以及安裝時請注意以下防護措施：

請勿摔落或敲擊本硬碟機。

當本裝置在作業期間，請勿移動本硬碟機。

設備名稱：硬式磁碟機 型號 (型式)：R/N: G4B, G5B, K1C

單元	限用物質及其化學符號					
	鉛 (Pb)	汞 (Hg)	鎘 (Cd)	六價鉻 (Cr (VI))	多溴聯苯 (PBB)	多溴二苯醚 (PBDE)
機箱外皮殼與鏡片	○	○	○	○	○	○
塑料其它部件	○	○	○	○	○	○
橡皮腳墊, 4 片	○	○	○	○	○	○
片金屬部件	-	○	○	○	○	○
固態硬碟/硬碟/電路板組合	-	○	○	○	○	○
組合電纜線/電源	-	○	○	○	○	○
備考1. “超出0.1 wt %”及“超出0.01 wt %”係指限用物質之百分比含量超出百分比含量基準 備考2. “○”係指該項限用物質之百分比含量未超出百分比含量基準值 備考3. “-”係指該項限用物質為排除項目。						

Index

A

Anchor Points [10](#)
Australian Consumers Only [14](#)

C

CE [16](#)
Connecting a PRO-BLADE SSD Mag [3](#)
Connecting the PRO-BLADE STATION [11](#)
Connecting the PRO-BLADE TRANSPORT [6](#)
CSA [16](#)

D

DIT Cart [10](#)

F

FCC [15](#)

H

Handling Precautions [1](#)

I

ICES [15](#)
Important Information [13](#)
Insert PRO-BLADE SSD Mag - STATION [12](#)
Insert PRO-BLADE SSD Mag - TRANSPORT [6](#)

O

Obtaining Service [13](#)
Operating System Compatibility [1](#)

P

PRO-BLADE Family [1](#)
PRO-BLADE SSD Mag [2](#)
PRO-BLADE SSD Mag Box contents [2](#)
PRO-BLADE SSD Mag Hardware [2](#)
PRO-BLADE SSD Mag Key Features [2](#)
PRO-BLADE SSD Mag Kit contents [2](#)
PRO-BLADE SSD Mag Product Notes [2](#)
PRO-BLADE STATION Box contents [8](#)
PRO-BLADE STATION Connectivity [10](#)
PRO-BLADE STATION Front LED [9](#)
PRO-BLADE STATION Front Panel [8](#)
PRO-BLADE STATION Hardware [8](#)
PRO-BLADE STATION Introduction [8](#)
PRO-BLADE STATION Key Features [8](#)
PRO-BLADE STATION Kit contents [8](#)
PRO-BLADE STATION Rear Ports [10](#)
PRO-BLADE TRANSPORT [4](#)

PRO-BLADE TRANSPORT Box contents [4](#)
PRO-BLADE TRANSPORT Connectivity [5](#)
PRO-BLADE TRANSPORT Front LED [5](#)
PRO-BLADE TRANSPORT Hardware [4](#)
PRO-BLADE TRANSPORT Key Features [4](#)
PRO-BLADE TRANSPORT Kit contents [4](#)

R

Regulatory Compliance - Austria [16](#)
Regulatory Compliance - Canada [15](#)
Regulatory Compliance - CE [16](#)
Regulatory Compliance - China [17](#)
Regulatory Compliance - FCC [15](#)
Regulatory Compliance - Japan [16](#)
Regulatory Compliance - Korea [17](#)
Regulatory Compliance - Taiwan [17](#)
Remove PRO-BLADE SSD Mag [7](#)
Remove PRO-BLADE SSD Mag - STATION [12](#)

S

Safety Compliance - US and Canada [16](#)
Safety Instructions [13](#)
Side Anchors [10](#)

W

Warranty Information [13](#)
Warranty Information - Australia [14](#)

Information furnished by SanDisk is believed to be accurate and reliable; however, no responsibility is assumed by SanDisk for its use nor for any infringement of patents or other rights of third parties which may result from its use. No license is granted by implication or otherwise under any patent or patent rights of SanDisk. SanDisk, the SanDisk design, the SanDisk logo, SanDisk Professional, the SanDisk Professional logo and PRO-BLADE are registered trademarks or trademarks of Western Digital Corporation or its affiliates in the US and/or other countries. macOS is a trademark of Apple Inc. Windows is a registered trademark or trademark of Microsoft Corporation in the United States and/or other countries. USB-C is a trademark of USB Implementers Forum. Thunderbolt is a trademark of Intel Corporation in the US and other countries. Kensington is a registered trademark of ACCO Brands. All other marks are the property of their respective owners. Product specifications subject to change without notice. Pictures shown may vary from actual products.

* 1TB = 1 trillion bytes. Actual user capacity may be less depending on operating environment.

** Based on read speed. Up to 2000MB/s with PRO-BLADE TRANSPORT and up to 3000MB/s with PRO-BLADE STATION. 1MB/s = 1 million bytes per second. Based on internal testing; performance may vary depending upon host device, usage conditions, drive capacity, and other factors.

*** The PRO-BLADE TRANSPORT (1TB+ capacities) is available for purchase with an included PRO-BLADE SSD mag. The PRO-BLADE TRANSPORT (0TB) and the PRO-BLADE STATION are sold separately. Additional PRO-BLADE SSD mags can be purchased separately.

© 2022 Western Digital Corporation or its affiliates. All rights reserved. Western Digital Technologies, Inc. is the seller of record and licensee in the Americas of SanDisk® products.

Western Digital
951 SanDisk Drive
Milpitas, California 95035 U.S.A.

D015-000062-AA00