

**plantronics®**

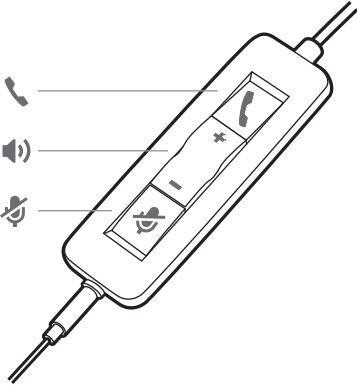
# Blackwire 3300 Series



User Guide

# Contents

Overview	3
Setup and software	4
Power and setup	4
Load software	4
Fit	4
Basics	6
Make/take/end calls	6
Volume	6
Mute	6
Troubleshooting	7
Headset	7
Support	8

# Overview



Icons	Inline control	LEDs	Function
	<b>Call button</b>	Flashes green	Incoming call
		Solid green	On a call
<b>+</b>	<b>Volume up button</b>		Increases the listening volume
<b>-</b>	<b>Volume down button</b>		Decreases the listening volume
	<b>Mute button</b>	Solid red	Headset is muted

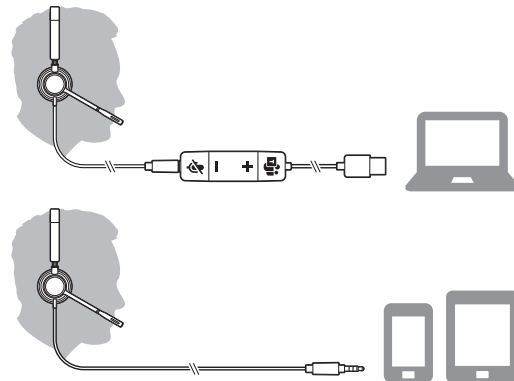
# Setup and software

## Power and setup

Power on your headset by connecting to your computer or mobile device.

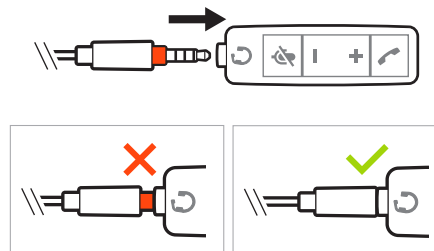
- **Via USB-A/USB-C connector**

**NOTE** Headset call control functionality may vary in mobile devices.



- **Via 3.5 mm connector** (Blackwire 3315/3325 only)

**NOTE** Headset call control functionality is not available.



## Load software

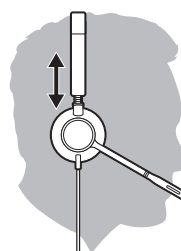
Plantronics Hub for Windows/Mac is an invaluable headset tool.

- 1 Download Plantronics Hub for Windows/Mac by visiting [plantronics.com/software](http://plantronics.com/software).
- 2 Using Plantronics Hub, manage your headset settings.
  - Call control for softphones
  - Change headset language
  - Update firmware
  - Turn features on/off

## Fit

### Adjust the headband

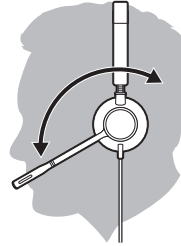
Lengthen or shorten the band until it fits comfortably. The cushions should sit comfortably over the center of your ears.



**Position the boom**

This headset can be worn on the left or right side.

Rotate the boom to align with your mouth.



**CAUTION** To avoid breaking the boom, only rotate it up and over 180°.

**Adjust the boom**


Gently bend the boom in or out so it is approximately two finger widths from the corner of your mouth.



# Basics

## Make/take/end calls

### **Answer or end a call**

Tap the Call  button or use your softphone.

### **Make a call**

Dial using your softphone application.

### **Redial**

If not on an active call, double key press the call button to redial the last call.

### **Hold**

Press and hold the call button for 2 seconds to put a call on hold.

## Volume

### **Listening volume**

Press the Volume up (+) or Volume down (-) button.

### **Adjust headset microphone volume (softphone)**

Place a test softphone call and adjust softphone volume and PC sound volume accordingly.

## Mute

During a call, briefly press the mute button to mute the microphone on the inline controller. To unmute press the button again.

# Troubleshooting

## Headset

---

I hear a high-pitched noise when wearing the headset.	<ul style="list-style-type: none"><li>• Ensure that your 3.5 mm connector is fully connected to the headset controller.</li></ul>
I cannot hear caller.	<ul style="list-style-type: none"><li>• Listening volume is too low. Press the volume up button on the headset, and/or ensure that the volume setting on your computer is set accurately.</li><li>• Your headset is not set as the default audio device. Use the audio settings in your sound control panel/preferences to select your headset as the default audio device.</li><li>• Ensure that your 3.5 mm connector is fully connected to the headset controller.</li></ul>
Callers cannot hear me.	<ul style="list-style-type: none"><li>• Headset is muted. Tap the mute button to unmute the microphone.</li><li>• Headset microphone boom aligned incorrectly. Align the headset boom with your mouth.</li><li>• Your headset is not set as the default Voice device. Use the audio settings in your sound control panel/preferences to change the input device.</li><li>• Ensure that your 3.5 mm connector is fully connected to the headset controller.</li></ul>
The sound in the headset is distorted.	<ul style="list-style-type: none"><li>• Lower the listen volume on your softphone until the distortion disappears.</li></ul>
I can hear an echo in the headset.	<ul style="list-style-type: none"><li>• Adjust volume on headset.</li><li>• Ensure that your 3.5 mm connector is fully connected to the headset controller.</li></ul>
When I use my headset with a softphone, the headset call control and mute buttons don't work.	<ul style="list-style-type: none"><li>• Make sure the softphone you are using is supported by viewing <a href="http://www.plantronics.com/softphonecompatibility">www.plantronics.com/softphonecompatibility</a>.</li><li>• If required to enable headset control (answer/end and mute) functionality, ensure you have Plantronics Hub for Windows/Mac installed. See Load software.</li><li>• Your mobile device may not support call control functionality. Check with device manufacturer.</li></ul>
The other headset I was using to listen to music does not work any more.	<ul style="list-style-type: none"><li>• Your headset will set itself as the default audio device in Windows. Use the audio settings in your sound control panel/preferences to change the audio device.</li></ul>
My phone is not finding my headset during a call or while listening to music.	<ul style="list-style-type: none"><li>• When on a call or listening to music, make sure that audio is routing to the desired headset by going to your settings and ensuring it is defaulted.</li></ul>

---

# Support

## NEED MORE HELP?

[plantronics.com/support](https://plantronics.com/support)

**Plantronics, Inc.**

345 Encinal Street  
Santa Cruz, CA 95060  
United States

**Plantronics B.V.**

Scorpius 171  
2132 LR Hoofddorp  
Netherlands

© 2020 Plantronics, Inc. All rights reserved. Poly, the propeller design, and the Poly logo are trademarks of Plantronics, Inc. Bluetooth is a registered trademark of Bluetooth SIG, Inc. and any use by Plantronics, Inc. is under license. All other trademarks are the property of their respective owners. Manufactured by Plantronics, Inc.

215239-06 01.20