

plantronics®

RIG 400 Pro

User Guide

Contents

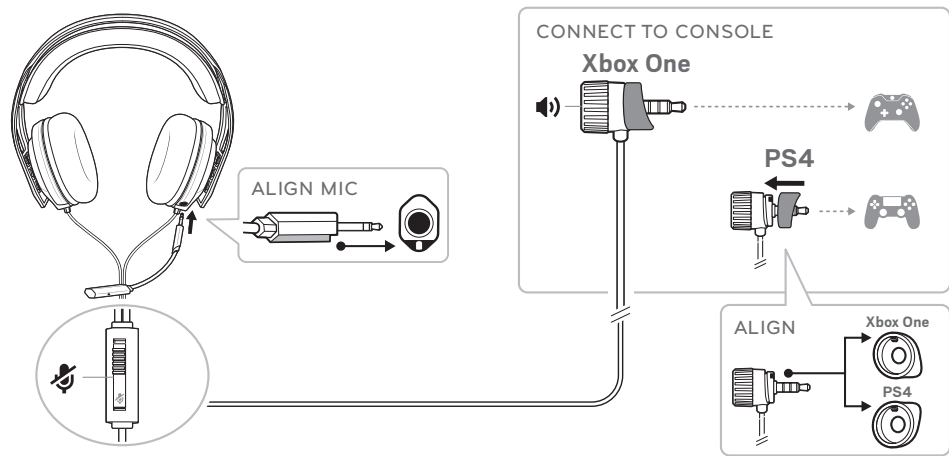
Setup and basics	3
Assemble headset	3
Be safe	3
Adjust the volume	4
System volume	4
Mute	4
Support	5

Setup and basics

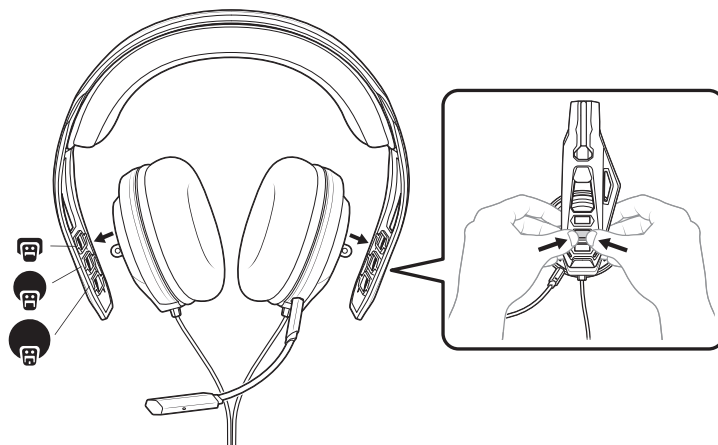
Assemble headset

Your headset components easily snap into the headset frame to configure the best fit and sound.

- 1 Follow the diagram to put your headset together.
 - When inserting the boom, align the notches on the boom jack and port. The microphone will not work if the boom is inserted incorrectly.
 - Out of the box, the volume wheel has the Xbox One sleeve attached. The PS4 sleeve is supplied. Align notches on the appropriate sleeve and volume wheel before attaching to your controller.



- 2 The headband adjusts to three sizes (small, medium, large) by moving the earcups. To remove an earcup, press the earcup to detach it from the headband.

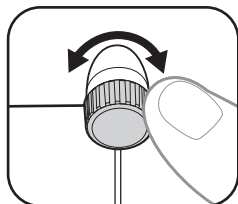


Be safe

Please read the safety guide for important safety, charging, battery and regulatory information before using your new headset.

Adjust the volume

To adjust your headset volume, turn the volume wheel.

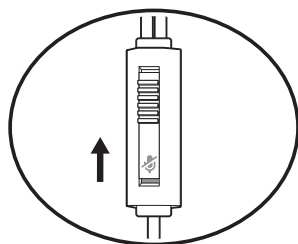


System volume

To adjust system volume, check your console's user guide.

Mute

To mute your headset, slide the mute switch to reveal the red color.



Support

NEED MORE HELP?

plantronics.com/support

Plantronics, Inc.

345 Encinal Street
Santa Cruz, CA 95060
United States

Plantronics B.V.

Scorpius 171
2132 LR Hoofddorp
Netherlands

© 2018 Plantronics, Inc. All trademarks are the property of their respective owners.

Patents: US D766,206; D800,091; CN ZL201630297847.0; EM 002814079; 003494863; TW D184697.
212337-06 (03.18)