



# LaCie Rugged SSD Pro User Manual



**Click here to access an up-to-date online version** of this document. You will also find the most recent content as well as expandable illustrations, easier navigation, and search capability.

# Contents

|          |  |           |
|----------|--|-----------|
| <b>1</b> | <b>Introduction</b>  | <b>4</b>  |
|          | Box content  | 4         |
|          | Minimum system requirements                                  | 4         |
|          | • Ports  | 4         |
|          | • Operating system   | 4         |
|          | • Minimum free disk space                                    | 5         |
|          | Ingress Protection rating                                    | 5         |
| <b>2</b> | <b>Cables and Connectors</b>                                 | <b>6</b>  |
|          | USB-C protocols  | 6         |
|          | Cables   | 6         |
| <b>3</b> | <b>Getting Started</b>                                       | <b>8</b>  |
|          | Connect the Thunderbolt 3 cable                              | 8         |
|          | Set up LaCie Rugged SSD Pro                                  | 9         |
|          | • Start here   | 9         |
|          | • Register your device                                       | 9         |
|          | • Download Toolkit   | 10        |
|          | • Install Toolkit  | 10        |
|          | Storage format   | 11        |
|          | Disconnecting the device                                     | 11        |
| <b>4</b> | <b>Use Toolkit to Set Up Sync Plus Plans and More</b>        | <b>13</b> |
|          | Create a Sync Plus plan                                      | 13        |
|          | Optimize disk performance                                    | 13        |
| <b>5</b> | <b>Optional Formatting and Partitioning</b>                  | <b>14</b> |
|          | About file system formats                                    | 14        |
|          | • How to choose the file system format                       | 14        |
|          | Manual formatting  | 15        |
|          | • Mac  | 15        |
|          | • macOS version 10.11 and later                              | 15        |
|          | • Windows  | 15        |
| <b>6</b> | <b>Safely Remove LaCie Rugged SSD Pro From Your Computer</b> | <b>17</b> |
|          | Mac  | 17        |
|          | • Eject via Finder window                                    | 17        |
|          | • Eject via Desktop  | 17        |
|          | Windows  | 17        |

|          |   |           |
|----------|---|-----------|
| <b>7</b> | <b>Frequently Asked Questions</b>                             | <b>19</b> |
|          | All users   | 19        |
|          | • Problem: My file transfers are too slow                     | 19        |
|          | • Problem: The provided Thunderbolt 3 cable is too short      | 19        |
|          | • Problem: Device doesn't work when connected to a USB-A port | 19        |
|          | • Problem: I'm receiving file transfer error messages         | 19        |
|          | Mac   | 20        |
|          | • Problem: The device icon does not appear on my desktop      | 20        |
|          | Windows   | 20        |
|          | • Problem: The device icon doesn't appear in Computer         | 20        |
| <br>     |   |           |
| <b>8</b> | <b>Regulatory Compliance</b>                                  | <b>22</b> |
|          | China RoHS 2  | 22        |
|          | Taiwan RoHS   | 22        |

# Introduction

LaCie® Rugged® SSD Pro features a Seagate® FireCuda® NVMe SSD, providing speeds of up to 2800MB/s<sup>1</sup> for file transfers and rendering.

For common questions and answers about your device, see [Frequently Asked Questions](#) or visit [LaCie customer support](#).

## Box content

- LaCie Rugged SSD Pro
- Thunderbolt™ 3 (40Gb/s) cable



**Important**—Save your packaging. If you experience problems with your device and want to exchange it, the device must be returned in its original packaging.

## Minimum system requirements

### Ports

Only connect LaCie Rugged SSD Pro to USB-C ports of the following type:

- Thunderbolt 3
- USB 3.1 Gen 1
- USB 3.1 Gen 2

Transfer rates vary (see [Cables and Connectors](#)).



Due to power delivery limitations, do not connect LaCie Rugged SSD Pro to USB Type A ports of any kind.

## Operating system

- Windows® 10 or higher
- macOS® 10.14 or higher

## Minimum free disk space

- 600MB recommended

## Ingress Protection rating

The Ingress Protection (IP) rating is a standard for defining the types of protection supported by equipment and devices. The two-digit code for IP lets users know the conditions that the device can withstand. The two digits are independent, with each number representing a different level of protection.

Rugged SSD Pro is rated IP67.

**6: Dust tight**—No ingress of dust. Complete protection against contact (dust tight).

**7: Immersion up to 1m**— Ingress of water in harmful quantity shall not be possible when the enclosure is immersed in water under defined conditions of pressure and time (up to 1 m of submersion).

Rugged SSD Pro has also been tested for the following:

- **Drop resistance**—Dropped from heights up to 3 meters (in non-operating mode).

---

<sup>1</sup> Data rates may vary depending on operating environment, interface, and capacity.

# Cables and Connectors

## USB-C protocols

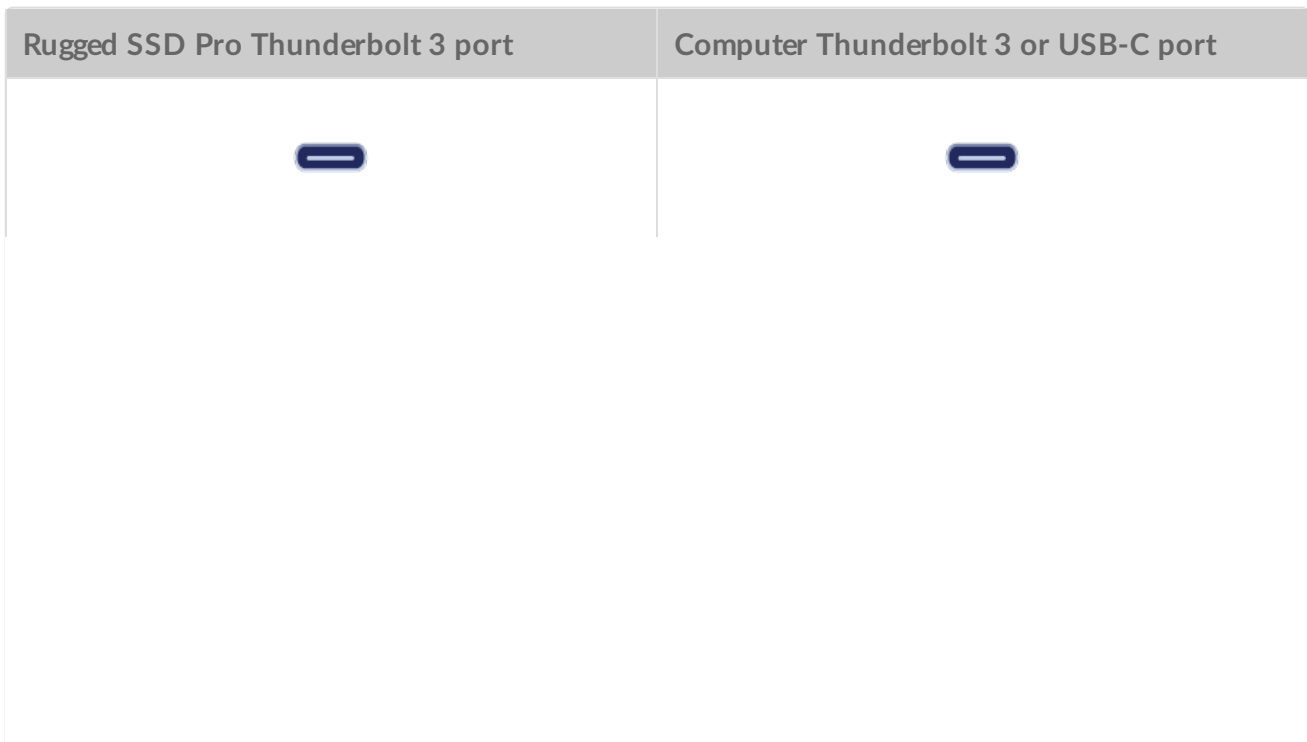
USB is a serial input/output technology for connecting peripheral devices to a computer. USB-C is the latest implementation of this standard and it provides higher bandwidth and new power management features.

The Thunderbolt 3 port on LaCie Rugged SSD Pro supports the following protocols:

| Protocol      | Transfer rate |
|---------------|---------------|
| Thunderbolt 3 | up to 40Gb/s  |
| USB 3.1 Gen 2 | up to 10Gb/s  |
| USB 3.1 Gen 1 | up to 5Gb/s   |

## Cables

Rugged SSD Pro is shipped with a single Thunderbolt 3 cable that is compatible with both Thunderbolt 3 and USB 3.1 Gen 1/Gen 2 (USB-C) ports.



Rugged SSD Pro Thunderbolt 3 port



Computer Thunderbolt 3 or USB-C port

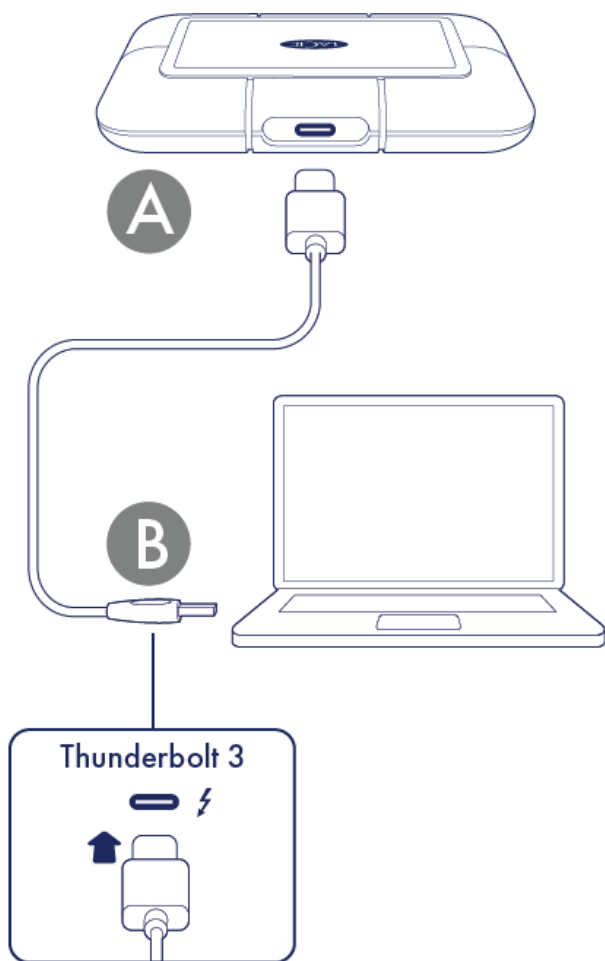


Due to power delivery limitations, do not connect LaCie Rugged SSD Pro to USB Type A ports of any kind.

# Getting Started

## 1 Connect the Thunderbolt 3 cable

For optimal transfer speeds, use the Thunderbolt 3 cable to connect LaCie Rugged SSD Pro to a Thunderbolt 3 port on your computer.



Alternatively, you can connect Rugged SSD Pro to a USB-3.1 Gen 1/Gen 2 (USB-C) port. Transfer speeds vary (see [Cables and Connectors](#)).



Due to power delivery limitations, do not connect LaCie Rugged SSD Pro to USB Type A ports of any kind.



## 2 Set up LaCie Rugged SSD Pro

The setup process lets you:

Register LaCie Rugged SSD Pro

Get the most from your drive with easy access to information and support.

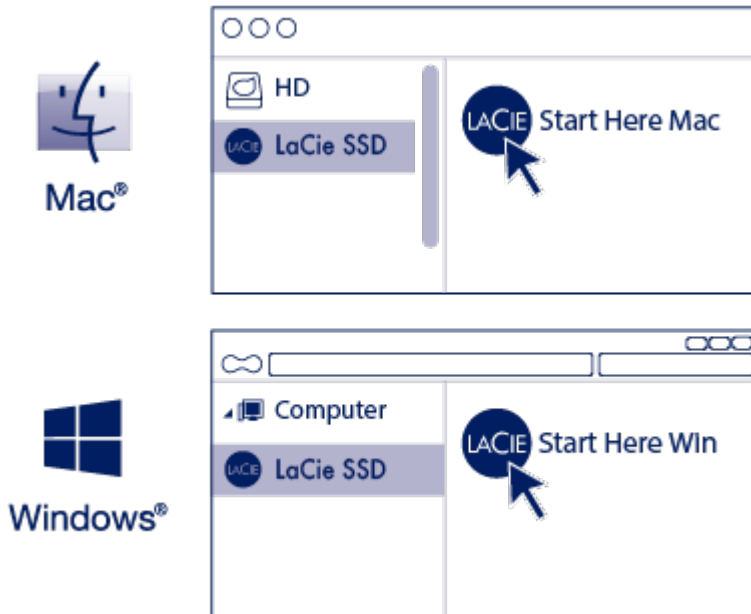
Install Toolkit

Manage Sync Plus plans and more.



Your computer must be connected to the internet to register your device and install Toolkit.

### A Start here



Using a file manager such as Finder or File Explorer, open LaCie Rugged SSD Pro and launch [Start Here Mac](#) or [Start Here Win](#).

### B Register your device

## Register

Jane

Doe

jdoe@example.com

I have read and agree to...

- Terms and Conditions
- Privacy Statement
- Optional Offers

[Register](#)

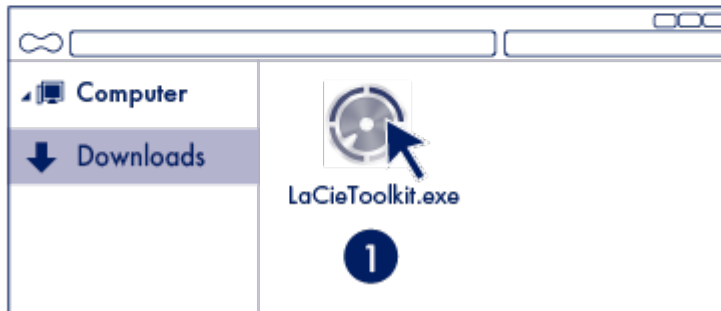
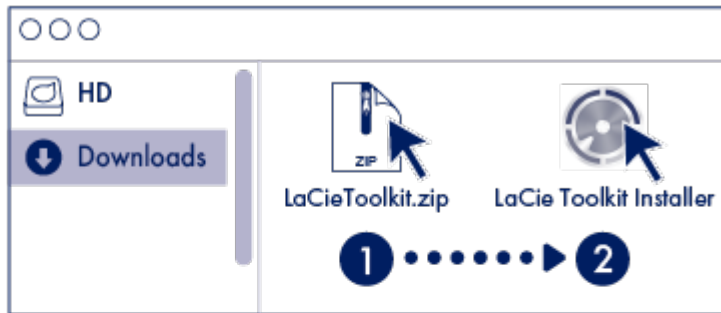
Enter your information and click [Register](#).

## C Download Toolkit

[Download](#) [Next](#)

Click the [Download](#) button.

## D Install Toolkit



Using a file manager such as Finder or File Explorer, go to the folder where you receive downloads.



Open the [LaCieToolkit.zip](#) file. Click on the [LaCie Toolkit Installer](#) to launch the application.



Click on the [LaCieToolkit.exe](#) file to launch the application.



Your computer must be connected to the internet to install and run Toolkit.

For details on Toolkit features, see the [LaCie Toolkit user manual](#).

## Storage format

LaCie Rugged SSD Pro is preformatted exFAT for compatibility with both Windows and Mac computers. If you use the drive with only one type of computer, you can optimize file copy performance by formatting it in the native file system for your operating system. Choose one of the following methods to optimize your drive:

- Use Toolkit to optimize disk format. See the [Toolkit user manual](#) for details.
- Manually format your drive. See [Optional Formatting and Partitioning](#) for details.

## Disconnecting the device

In order to avoid file system corruption, it's important to unmount LaCie Rugged SSD Pro's volumes before disconnecting the interface cable. See [Safely Remove LaCie Rugged SSD Pro From Your Computer](#) for details.

# Use Toolkit to Set Up Sync Plus Plans and More

## Create a Sync Plus plan

Sync Plus creates a synced folder on your LaCie Rugged SSD Pro that mirrors folders on your PC or Mac, so your files are available in both places. Deleted files can be automatically stored in an archive folder on Rugged SSD Pro in case you need them.

- [Click here](#) for details on setting up Sync Plus.

## Optimize disk performance

LaCie Rugged SSD Pro is preformatted exFAT. If you use the drive with only one type of computer, you can optimize file copy performance by formatting the drive in the native file system for your operating system—NTFS for Windows or HFS+ for Macs.

- [Click here](#) for details on Toolkit Optimize.



You can also manually format your drive. See [Optional Formatting and Partitioning](#) for details.



**Formatting erases everything on the storage device.** LaCie strongly recommends that you **back up all data** on your storage device before performing the steps below. LaCie is not responsible for any data lost due to formatting, partitioning, or using a LaCie storage device.

# Optional Formatting and Partitioning

LaCie Rugged SSD Pro is preformatted exFAT for compatibility with both Mac and Windows computers. If you use the drive with only one type of computer, you can optimize file copy performance by formatting the drive in the native file system for your operating system.

## About file system formats

**NTFS**—The native file system for Windows. macOS can read NTFS volumes but cannot natively write to them.

**Mac OS Extended (HFS+)**—An Apple file system optimized for macOS 10.12 and earlier. This file system remains the best option for external storage devices and is the only format compatible with Time Machine. Windows cannot natively read or write to HFS+ (journaled) volumes.

**APFS (Apple File System)**—An Apple file system optimized for solid state drives (SSDs) and flash-based storage systems. While APFS may benefit SSD performance, note the following restrictions:

- You cannot use an APFS-formatted disk as your Time Machine backup drive. Format LaCie Rugged SSD Pro to HFS+ if you intend to use it with Time Machine.
- APFS is only supported on macOS 10.13 or later.

**exFAT**—Compatible with macOS and Windows. exFAT is not a journaled file system which means it can be more susceptible to data corruption when errors occur or the drive is not disconnected properly from the computer.

## How to choose the file system format

---

### Use NTFS if:

...you connect the storage device to Windows computers, and you don't need to allow a Mac to write to the storage device.

---

### Use HFS+ if:

...you connect the storage device to Mac computers, and you don't need to allow a Windows computer to read or write to the disk. HFS+ is the only format compatible with Time Machine.

---

### Use APFS if:

---

---

...you connect the storage device to Mac computers, and you don't need to allow a Windows computer to read or write to the drive. Do not use APFS if you intend to use LaCie Rugged SSD Pro with Time Machine, or if your computer is not running macOS 10.13 or later.

---

### Use exFAT if:

---

...you need to allow both Mac and Windows computers to read and write to the storage device.

## Manual formatting

Use the steps below to manually format and partition a storage device.

**!** **Formatting erases everything on the storage device.** LaCie highly recommends that you **back up all data** on your storage device before performing the steps below. LaCie is not responsible for any data lost due to formatting, partitioning, or using a LaCie storage device.

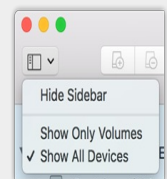
## Mac

### macOS version 10.11 and later

1. Open the Finder and go to [Applications > Utilities > Disk Utility](#).
2. In the sidebar to the left, select your LaCie Rugged SSD Pro.



**macOS starting version 10.13**—Make sure to select the storage device and not just the volume. If you don't see two entries listed in the sidebar, change the view in disk utility to show both the drive and the volume. The view button is in the upper left side of the Disk Utility window. Change the view to Show All Devices. This feature was introduced in macOS 10.13 and is not available in 10.11 or 10.12.



3. Select [Erase](#).
4. A dialog box opens. Enter a name for the drive. This will be the name displayed when the drive mounts.
5. For Format, select [OS X Extended \(Journaled\)](#).
6. For Scheme, select [GUID Partition Map](#).
7. Click [Erase](#).
8. Disk Utility formats the drive. When it's finished, click [Done](#).

## Windows

1. Make sure the storage device is connected to and mounted on the computer.
2. Go to Search and then type Disk Management. In the search results, double-click [Disk Management](#).

3. From the list of storage devices in the middle of the Disk Management window, locate your LaCie device.
4. The partition must be available to format. If it is currently formatted, right click on the partition and then choose [Delete](#).
5. To create a new partition, right click on the volume and select [New Simple Volume](#). Follow the on-screen instructions when the New Simple Volume Wizard appears.



# Safely Remove LaCie Rugged SSD Pro From Your Computer

Always eject a storage device from your computer before physically disconnecting it. Your computer must perform filing and housekeeping operations on the drive before it is removed. Therefore, if you unplug the drive without using the operating system's software, your files can become corrupt or damaged.

## Mac

There are several ways you can eject your storage device from a Mac. See below for two options.

### Eject via Finder window

1. Open a Finder window.
2. On the sidebar, go to Devices and locate the storage device you want to eject. Click the eject symbol to the right of the storage device name.
3. Once the storage device disappears from the sidebar or, the Finder window closes, you can disconnect the interface cable from your Mac.

### Eject via Desktop

1. Select the desktop icon for your storage device and drag it to the Trash.
2. When the storage device icon is no longer visible on your desktop, you can physically disconnect it from your Mac.

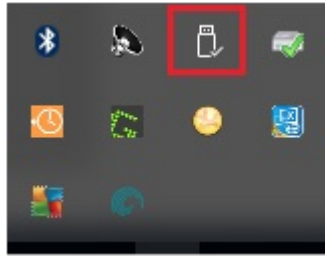
## Windows

Use the Safely Remove tool to eject a storage device.

1. Click the Safely Remove icon in your Windows System Tray to view the devices you can eject.



Windows 8 / Windows 10



2. If you don't see the Safely Remove Hardware icon, click the Show hidden icons arrow in the system tray to display all icons in the notification area.
3. In the list of devices, choose the storage device you want to eject. Windows displays a notification when it is safe to remove the device.
4. Disconnect the storage device from the computer.

# Frequently Asked Questions

For help setting up and using LaCie Rugged SSD Pro, review the frequently asked questions below. For additional support resources, go to [LaCie customer support](#).

## All users

### Problem: My file transfers are too slow

Q: Are both ends of the Thunderbolt 3 cable firmly attached?

A: Review troubleshooting tips for cable connections below:

- Check both ends of the cable and make sure that they are fully seated in their respective ports.
- Try disconnecting the cable, waiting 10 seconds, and then reconnecting it.
- Try a different Thunderbolt 3 cable.

Q: Are there other devices connected to the same port or hub?

A: Disconnect other devices and see if the storage device's performance improves.

### Problem: The provided Thunderbolt 3 cable is too short

Q: Can I use my storage device with a longer cable?

A: Yes, provided it is certified according to Thunderbolt 3 standards. However, LaCie recommends using the cable shipped with your storage device for the best results. If you use a longer cable and experience problems with detection, transfer rates or disconnection, use the original cable included with your storage device.

### Problem: Device doesn't work when connected to a USB-A port

Q: Can I connect LaCie Rugged SSD Pro to a USB 3.0/2.0 (USB-A) port?

A: No. Due to power delivery limitations, connections to USB-A ports of any kind are not supported.

### Problem: I'm receiving file transfer error messages

Q: Did you get an error message telling you that the drive has been disconnected when coming out of sleep mode?

A: Ignore this message since the drive remounts on the desktop despite the pop-up.

## Mac

### Problem: The device icon does not appear on my desktop

Q: Is your Finder configured to hide external disks on the desktop?

A: Go to Finder and then check **Preferences | General tab | Show these items on the desktop**. Confirm that **External Disks** is selected.

Q: Is your device mounting in the operating system?

A: Open **Disk Utility** at **Go | Utilities | Disk Utility**. If the device is listed in the left-hand column, check your Finder preferences to see why it is not displayed on the desktop (review the question above).

Q: Does your computer's configuration meet the minimum system requirements for use with this storage device?

A: Refer to the product packaging for the list of supported operating systems.

Q: Did you follow the correct installation steps for your operating system?

A: Review the installation steps in [Getting Started](#).

## Windows

### Problem: The device icon doesn't appear in Computer

Q: Is the storage device listed in Device Manager?

A: All storage devices appear in at least one place in Device Manager.

Type `Device Manager` in Search to launch it. Look in the Disk Drives section and, if necessary, click the Plus (+) icon to view the full list of devices. If you're uncertain that your storage device is listed, safely unplug it and then reconnect it. The entry that changes is your LaCie device.

Q: Is your device listed next to an unusual icon?

A: Windows Device Manager usually provides information about failures with peripherals. While the Device Manager can assist with troubleshooting most problems, it may not display the exact cause or provide a precise solution.

An unusual icon next to the device can reveal a problem. For example, instead of the normal icon based on the type of device, it has an exclamation point, question mark or an X. Right click this icon and then choose Properties. The General tab provides a potential reason why the device is not working as expected.

# Regulatory Compliance

Product Name LaCie Rugged SSD Pro

Regulatory Model Number LRD0SV2

## China RoHS 2



China RoHS 2 refers to the Ministry of Industry and Information Technology Order No. 32, effective July 1, 2016, titled Management Methods for the Restriction of the Use of Hazardous Substances in Electrical and Electronic Products. To comply with China RoHS 2, we determined this product's Environmental Protection Use Period (EPUP) to be 20 years in accordance with the Marking for the Restricted Use of Hazardous Substances in Electronic and Electrical Products, SJT 11364-2014.

中国 RoHS 2 是指 2016 年 7 月 1 日起施行的工业和信息化部令第 32 号“电力电子产品限制使用有害物质管理办法”。为了符合中国 RoHS 2 的要求，我们根据“电子电气产品有害物质限制使用标识”(SJT 11364-2014) 确定本产品的环保使用期 (EPUP) 为 20 年。

| 部件名称<br>Part Name                            | 有害物质<br>Hazardous Substances |           |           |                            |               |                 |
|--|------------------------------|-----------|-----------|----------------------------|---------------|-----------------|
|  | 铅<br>(Pb)                    | 汞<br>(Hg) | 镉<br>(Cd) | 六价铬<br>(Cr <sup>6+</sup> ) | 多溴联苯<br>(PBB) | 多溴二苯醚<br>(PBDE) |
| 固态驱动器<br>SSD                                 | X                            | O         | O         | O                          | O             | O               |
| 外接硬盘印刷电路板<br>Bridge PCBA                     | X                            | O         | O         | O                          | O             | O               |
| 电源 (如果提供)<br>Power Supply (if provided)      | X                            | O         | O         | O                          | O             | O               |
| 接口电缆 (如果提供)<br>Interface cable (if provided) | X                            | O         | O         | O                          | O             | O               |
| 其他外壳组件<br>Other enclosure components         | O                            | O         | O         | O                          | O             | O               |

本表格依据 SJ/T 11364 的规定编制。  
This table is prepared in accordance with the provisions of SJT 11364-2014

O: 表示该有害物质在该部件所有均质材料中的含量均在 GB/T 26572 规定的限量要求以下。  
O: Indicates that the hazardous substance contained in all of the homogeneous materials for this part is below the limit requirement of GB/T26572.

X: 表示该有害物质至少在该部件的某一均质材料中的含量超出 GB/T 26572 规定的限量要求。  
X: Indicates that the hazardous substance contained in at least one of the homogeneous materials used for this part is above the limit requirement of GB/T26572.

## Taiwan RoHS

Taiwan RoHS refers to the Taiwan Bureau of Standards, Metrology and Inspection's (BSMI's) requirements in standard CNS 15663, Guidance to reduction of the restricted chemical substances in electrical and electronic equipment. Beginning on January 1, 2018, Seagate products must comply with the "Marking of presence" requirements in Section 5 of CNS 15663. This product is Taiwan RoHS compliant. The following table meets the Section 5 "Marking of presence" requirements.

台灣RoHS是指台灣標準局計量檢驗局(BSMI)對標準CNS15663要求的減排電子電氣設備限用化學物質指引。從2018年1月1日起, Seagate 產品必須符合CNS15663第5節「含有標示」要求。本產品符合台灣RoHS。下表符合第5節「含有標示」要求。

| 產品名稱：外接式固態硬碟，型號：LRD0SV2  |            | Product Name: LaCie Rugged SSD Pro, Model: LRD0SV2 |           |  |               |                 |
|--|------------|--|-----------|--|---------------|-----------------|
| 單元<br>Unit   | 限用物質及其化學符號 |  |           | Restricted Substance and its chemical symbol |               |                 |
|  | 鉛<br>(Pb)  | 汞<br>(Hg)  | 鎘<br>(Cd) | 六價鉻<br>(Cr <sup>6+</sup> )                   | 多溴聯苯<br>(PBB) | 多溴二苯醚<br>(PBDE) |
| 固態驅動器<br>SSD   | —          | 0  | 0         | 0  | 0             | 0               |
| 外接硬盤印刷電路板<br>Bridge PCBA   | —          | 0  | 0         | 0  | 0             | 0               |
| 電源 (如果提供)<br>Power Supply (if provided)  | —          | 0  | 0         | 0  | 0             | 0               |
| 傳輸線材 (如果提供)<br>Interface cable (if provided)   | —          | 0  | 0         | 0  | 0             | 0               |
| 其他外殼組件<br>Other enclosure components   | 0          | 0  | 0         | 0  | 0             | 0               |
| 備考 1. "0" 係指該項限用物質之百分比含量未超出百分比含量基準值。<br>Note 1. "0" indicates that the percentage content of the restricted substance does not exceed the percentage of reference value of presence. |            |  |           |  |               |                 |
| 備考 2. "—" 係指該項限用物質為排除項目。<br>Note 2. "—" indicates that the restricted substance corresponds to the exemption.  |            |  |           |  |               |                 |