



**We love that you are rocking JLab Audio!**  
**We take pride in our products and fully stand behind them.**



**YOUR WARRANTY**

All warranty claims are subject to JLab Audio authorization and at our sole discretion. Retain your proof of purchase to ensure warranty coverage.



**CONTACT US**

Reach out to us at [support@jlabaudio.com](mailto:support@jlabaudio.com) or visit [jlabaudio.com/contact](http://jlabaudio.com/contact)

**REGISTER TODAY**

[jlabaudio.com/register](http://jlabaudio.com/register)

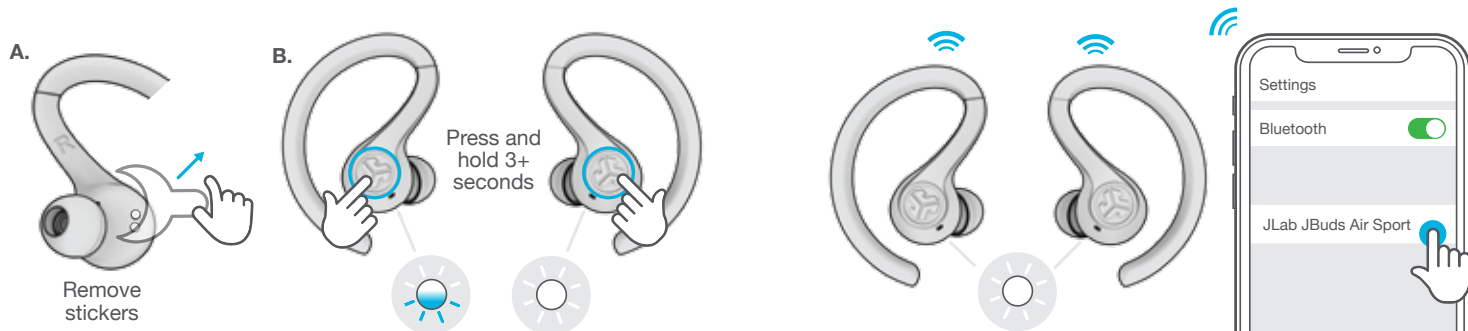
**Product updates | How-to tips  
 FAQs & more**

**FIRST TIME SETUP**

- 1 AUTO-CONNECTING EARBUDS**
  - A.** Take earbuds out of the charging case and remove stickers.
  - B.** Press and hold both touch sensors 3+ seconds to turn ON. Left earbud turns **solid white** and Right earbud **blinks blue/white** indicating ready to pair to your device.

- 2 CONNECTING TO BLUETOOTH**

Select "JLab JBuds Air Sport" in your device settings. Voice prompt "Bluetooth connected" followed by **solid white lights** will indicate you are connected.



**ADDING NEW / ADDITIONAL BLUETOOTH DEVICES:**

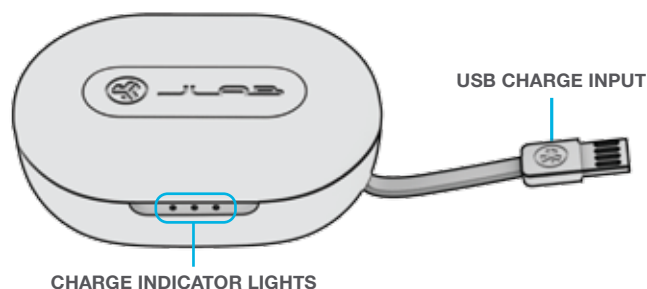
**Turn OFF Bluetooth** from any previously connected device. **Turn ON Bluetooth** from new device. Take earbuds out of the case. Earbuds will automatically enter Bluetooth Pairing. Select "JLab JBuds Air Sport" in device settings to connect.

**IN THE BOX**

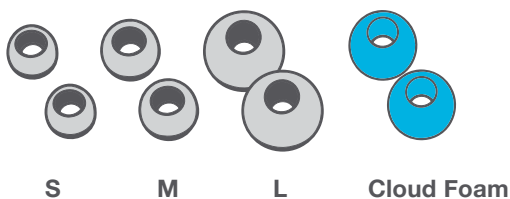
**EARBUDS**



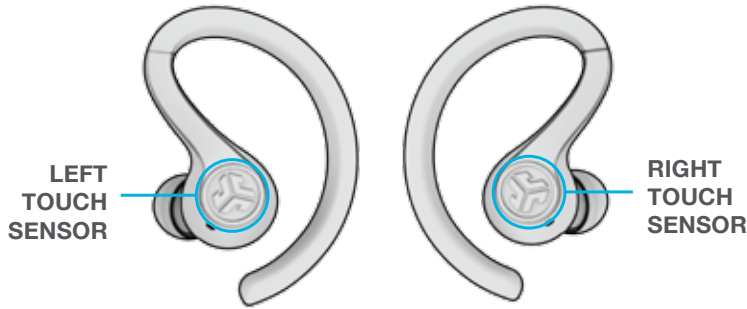
**CHARGING CASE**



**EARTIPS**



## BUTTON FUNCTIONS



**VOLUME DOWN:** Single tap  
**SIRI (iOS) or "OK GOOGLE" (ANDROID):** Double tap  
**TRACK BACK:** Press & hold 1+ sec  
**EQ CHANGE:** Triple tap. (JBuds Air Sport will cycle 3 EQ settings)  
**POWER ON:** Press & hold 3+ sec

**VOLUME UP:** Single tap  
**PLAY / PAUSE:** Double tap  
**TRACK FORWARD:** Press & hold 1+ sec  
**ANSWER:** Single tap  
**HANG UP:** Double tap  
**REJECT INCOMING CALLS:** Press & hold 1+ sec  
**BE AWARE ON / OFF:** Triple tap  
**POWER ON:** Press & hold 3+ sec

## VOICE PROMPTS

**"Hello":** Power ON  
**"Earbuds joined":** Earbuds paired to each other  
**"Ready to Pair":** JBuds Air Sport are ready to pair to Bluetooth device  
**"Bluetooth Connected":** Earbud is connected to device  
**"Battery Full":** 100-80%  
**"Battery Medium":** 80-20%  
**"Low Battery":** Less than 20%  
When power decreases to 10%, "Low Battery" will play  
**"Goodbye":** Power OFF

## TURN OFF EARBUDS WITHOUT CHARGING CASE:

Enter your Bluetooth device settings and disconnect the JBuds Air Sport. Earbuds will power OFF after 3 minutes.

## EQUALIZER MODES

Triple tap left earbud for different EQ settings. Voice prompts will indicate EQ settings (JBuds Air Sport will cycle 3 EQ settings)



**JLab SIGNATURE**  
JLab C3™ signature sound with amplified bass and vocals



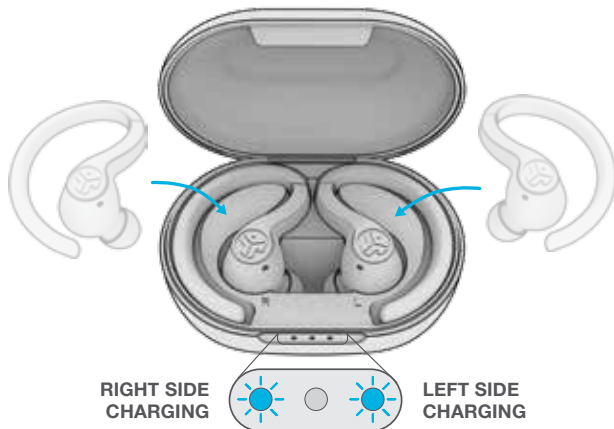
**BALANCED**  
Even sound with no additional enhancements



**BASS BOOST**  
Amplified bass and sub-bass

## CHARGING EARBUDS

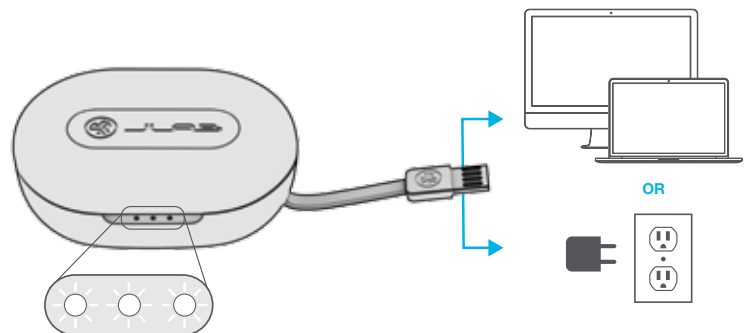
- 1 Placing the earbuds in the charging case will power off earbuds and start charging. **Blue lights** indicate earbuds are charging and will turn off when fully charged.



- 2 When earbuds are taken out of the case, they will auto power on and reconnect to your device.

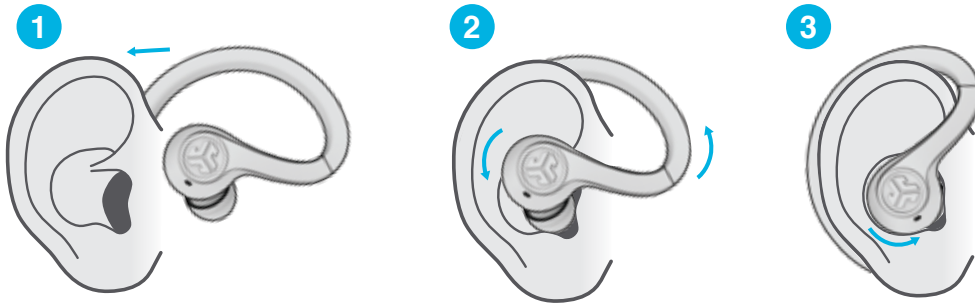
## CHARGING CASE

Connect the JBuds Air Sport to computer or USB 5V 1A (or less) output device.



Lights **pulse white** when charging and **turn solid white** when fully charged.

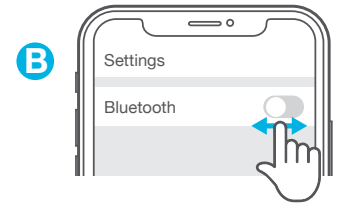
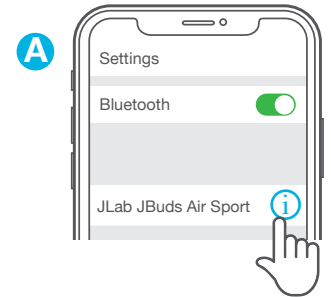
## FITTING



## TROUBLESHOOTING

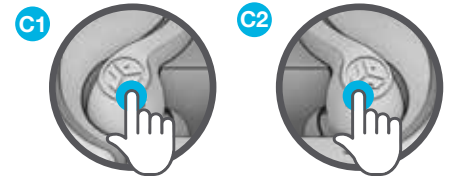
### NO AUDIO IN LEFT EARBUD OR EARBUDS DISCONNECT FROM EACH OTHER (MANUAL RESET)

- 1 Enter your Bluetooth device settings and forget the JBuds Air Sport. Fig **A**
- 2 Open the charging case door and leave both earbuds inside. Starting with ONE earbud, **quickly tap the touch sensor 4x times**. Light will **blink blue 4x times** then turn **solid blue**. Leave the earbuds in the charging case. Fig **C1**
- 3 Repeat with the other earbud. **Quickly tap the touch sensor 4x times**. Light will **blink blue 4x times** then turn **solid blue**. Fig **C2**
- 4 Take both earbuds out of the charging case and keep them within 2 inches from each other. Wait for Left earbud to turn **solid white** and Right to **blink blue/white**. You are now ready to pair to your Bluetooth device.



### BLUETOOTH DEVICE DOES NOT CONNECT/RECONNECT

- 1 Enter your Bluetooth device settings and forget the JBuds Air Sport. Fig **A**
- 2 Turn OFF then ON Bluetooth. Fig **B**
- 3 Take the earbuds out of the case. Wait for Left to turn **solid white** and Right **blinking blue/white**.
- 4 Select "JLab JBuds Air Sport" in device settings to reconnect.



Instructional videos at: [JLABAUDIO.COM/MANUALS](https://www.jlabaudio.com/manuals)

## QUICK TIPS

- The Bluetooth connection is established from the right earbud. For the most stable connection, keep the device near right hand side or in right pocket.
- If you prefer to wear only one earbud, you must wear the **right earbud** as this is the main earbud connected to Bluetooth.
- Choosing the correct ear tip makes a significant improvement in audio quality due to the proper seal for the driver. Test all ear tips for best results.
- Only ONE Bluetooth device can be connected at a time. Turn off Bluetooth on unwanted devices and turn on Bluetooth on chosen device to connect.

## WARNING

**Fully dry off the earbuds before placing in the charging case.**

If the earbuds are damp or wet, this will cause damage to the charging case. The warranty will be voided if the charging case shows damage by water/sweat.



## CAUTIONS

- Avoid extreme heat, cold, and humidity.
  - Avoid dropping or crushing the earbuds.
  - Wax may build up in the earbud tips, lowering the sound quality.  
Carefully remove the wax with a cotton swab or other small tool to improve the sound quality.
  - If you experience discomfort or pain, try lowering the volume or discontinuing use temporarily.
  - If you experience regular discomfort while using this product, discontinue use and consult your physician.
  - We recommend you treat your earbuds as you would a nice pair of sunglasses and keep them in safe location when not in use.
- 



[Shop products](#) | [Product alerts](#) | [Burn-in your headphones](#)

JLab Audio + Burn-in Tool

