



EN

RACING WHEEL PRO DELUXE
for Nintendo Switch™ / PC

Instruction Manual

Thank you for purchasing this product.
Before using this product, please read the instructions carefully.
After reading the instruction manual, please keep it for reference.

Table of Contents

Product Setup	2-3	Adjustable Sensitivity	9
Caution	3	Adjustable Dead Zone	10
Included	4	Quick Handling Mode	11
Compatibility	4	Reset Back to Default Settings	11
Layout and Features	5	Directional Pad Control Toggle Switch	11
How to Set Up	6-7	Assign Mode	12-13
▸ Steering Unit		ITEM Button Hold Function	13
▸ Foot Pedals		Main Features	14
How to Connect	8		



◀ **Compatible Software**

<https://stores.horiusa.com/nsw-429U/compatibility/>

* Make sure that your Nintendo Switch™ is updated with the latest system software.

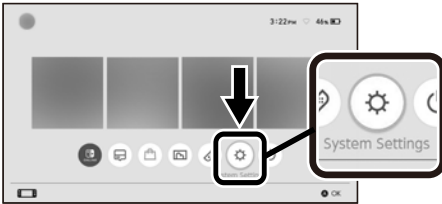
* This controller works only in TV Mode.

* This product does not support the following features:

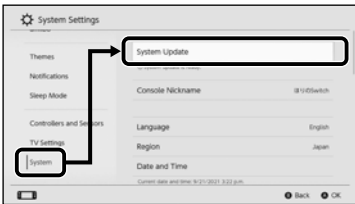
· Gyroscope · Accelerometer · IR Motion Camera · Player LED
· HD Rumble · HOME Button Notification LED · NFC

Product Setup

- 1** Make sure that your Nintendo Switch™ is updated with the latest system software.

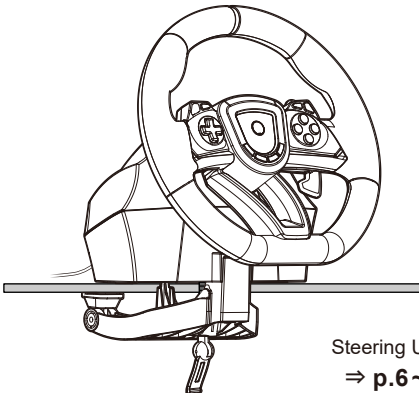


From the Home Menu select 'Settings'.

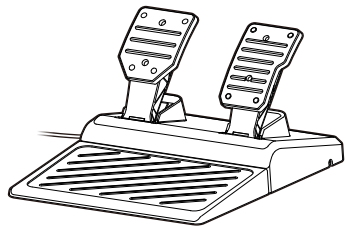


Select 'System' and then 'System Update' to update to the latest system software. (Please skip this step if console already has the latest system software.)

- 2** Mount the steering unit onto a flat, stable surface.

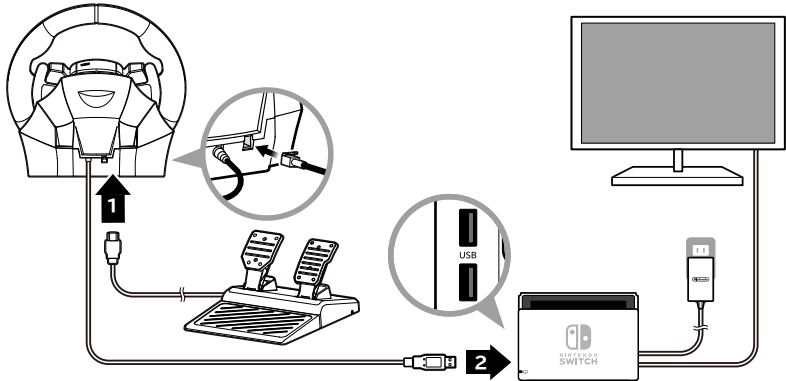


Steering Unit
⇒ p.6~7



Foot Pedals
⇒ p.7

3 Connect all of the cables accordingly.



Turn the steering wheel fully to the right, then fully to the left.
(This ensures proper wheel calibration.)

How to Connect
⇒ p.8



Caution

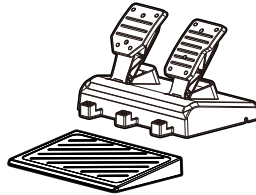
**Parents/Guardians:
Please read the following information carefully.**

- This product contains small parts. Keep away from children under 3 years old.
- Keep this product away from small children or infants. Seek medical attention immediately if any small parts are swallowed.
- Long cord. Strangulation hazard.
- Keep the product away from dusty or humid areas.
- Do not use this product if it has been damaged or modified.
- Do not get this product wet. This may cause an electric shock or malfunction.
- Do not place this product near heat sources or leave under direct sunlight for an extended period. Overheating may cause malfunction.
- Do not use this product with a USB hub. The product may not function properly.
- Do not touch the metal parts of the USB plug.
- Do not apply strong impact or weight on the product.
- Do not pull roughly or bend the cable of the product.
- Do not disassemble, modify or attempt to repair this product.
- If product needs cleaning, use only a soft dry cloth. Do not use any chemical agents like benzene or thinner.
- The wires are not to be inserted into socket-outlets.
- The packaging must be retained since it contains important information.
- The normal function of the product may be disturbed by strong electro-magnetic interference. If so, simply reset the product to resume normal operation by following the instruction manual (How to Connect). In case the function does not resume, please relocate to an area which does not have electro-magnetic interference to use the product.
- Do not use this product for anything other than its intended purpose. We are not responsible for any accidents or damages in the event of use other than the intended purpose.
- Keep your fingers away from the foot pedals during gameplay.

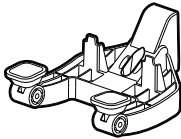
Included



Steering Unit × 1



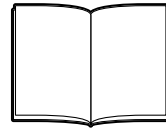
Foot Pedals × 1



Clamp × 1



Screw × 1



Instruction Manual × 1

Compatibility

Nintendo Switch™ Nintendo Switch™ – OLED Model

Important

Please be sure to read the instruction manual for the Nintendo Switch™ before using the product with the Nintendo Switch™. Make sure that your Nintendo Switch™ is updated with the latest system software.

* An Internet connection is required to update the Nintendo Switch™ to the latest system software.

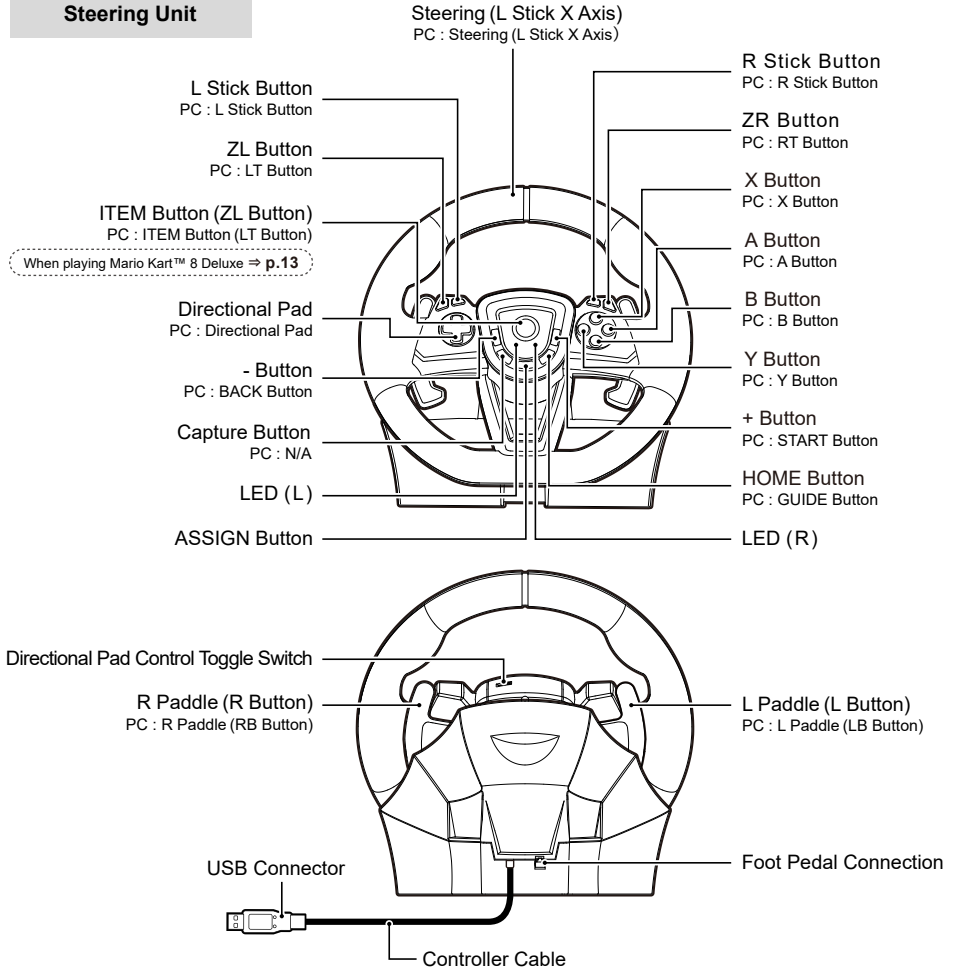
PC (XInput)

Supported OS	Windows® 11 / 10
Input Method	XInput
System Requirements	USB Port (Type-A)

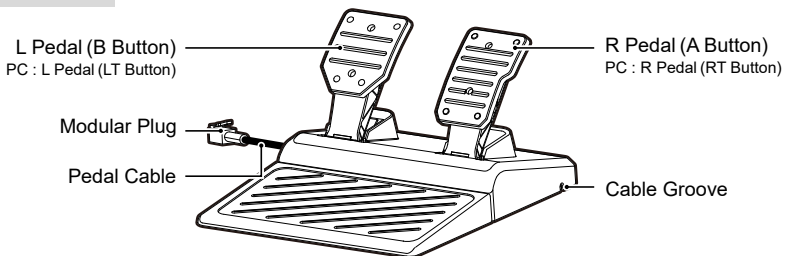
* Functions as PC controller through XInput. This product does not support DirectInput.

Layout and Features

Steering Unit



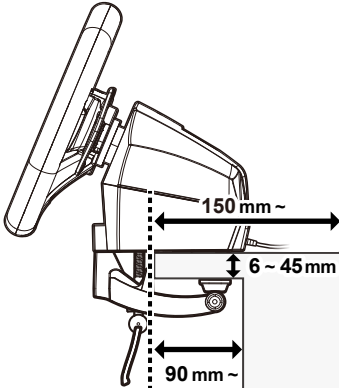
Foot Pedals






How to Set Up

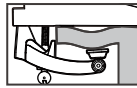
Steering Unit

Flat, hard surface required
(i.e., table)

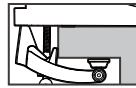


Please read before setup

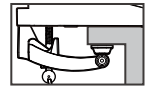
-  Tighten the clamp into the steering unit base with the screw.
-  Carefully detach from furniture to prevent damage to furniture or product.
-  Do not attach to any unstable surface as shown in the diagram below.



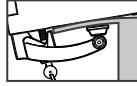
Uneven



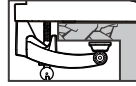
Too thick



Shallow clamp grip



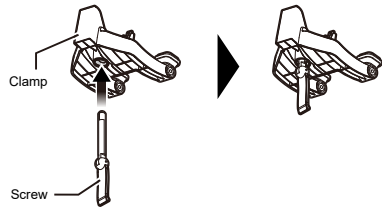
Thin or soft



Fragile (i.e., glass)

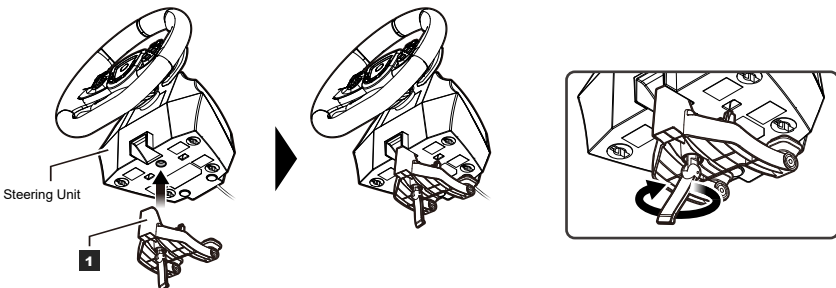
1

Put the screw through the clamp.



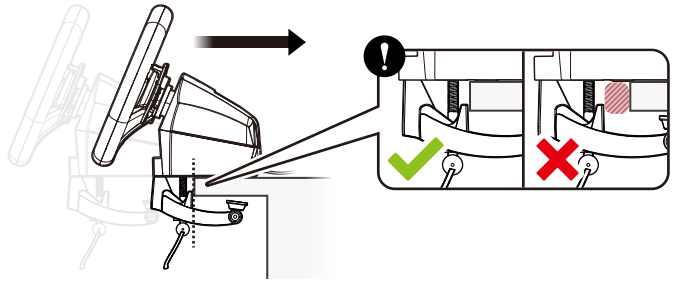
2

Put **1** through the hole on the bottom of the steering unit.
Rotate the screw clockwise to secure temporarily.



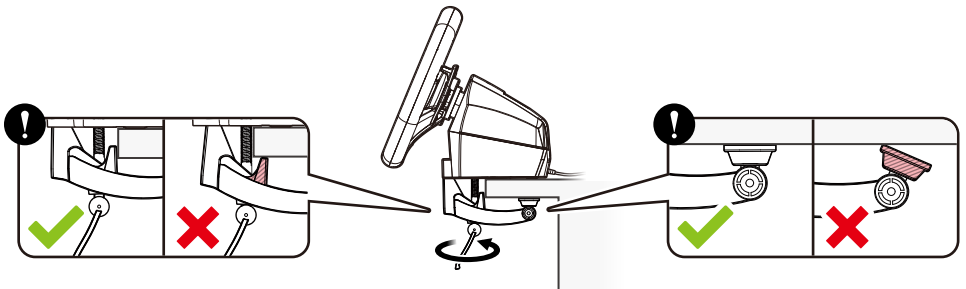
3

Place the mounting surface between the clamp and the base of the steering unit.



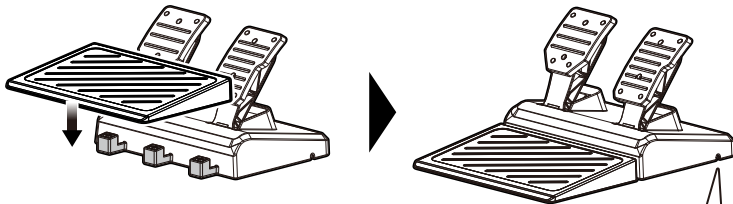
4

Rotate the screw clockwise while supporting the steering unit and firmly secure.



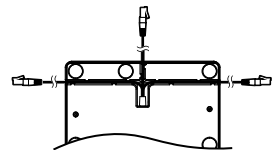
■ Foot Pedals

Assemble the foot pedal as shown in the image below.



Cable Groove

Slide the foot pedal cable through any of the three grooves on the bottom of the foot pedals.

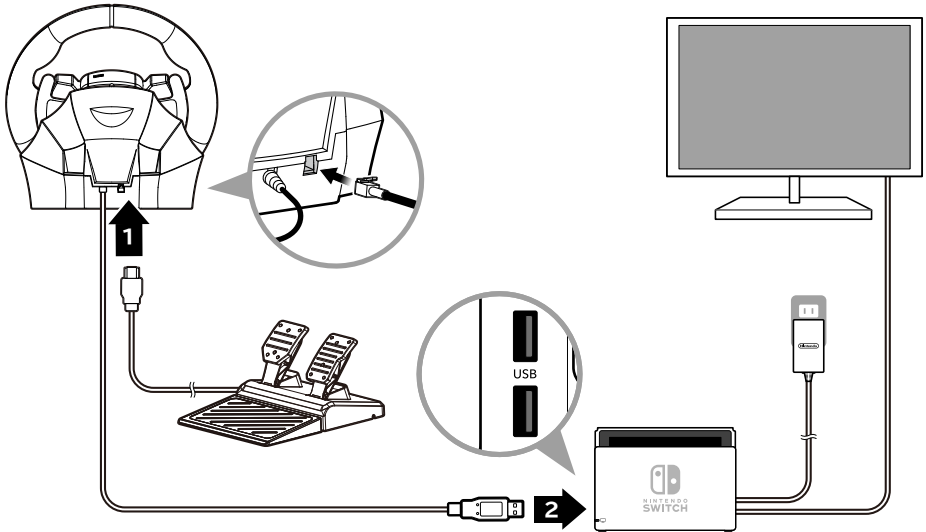


Bottom of Foot Pedals

How to Connect

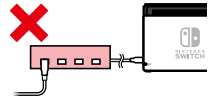
1

Connect as shown in the image below:



! Please follow the instructions below to avoid malfunction.

- Do not use this product with a USB hub.
- Do not plug / unplug the controller during gameplay.
- Do not push any buttons or move the steering unit or pedals when doing the following:
When connecting the product to the Nintendo Switch™ / When turning on the Nintendo Switch™ /
When waking the console from sleep mode

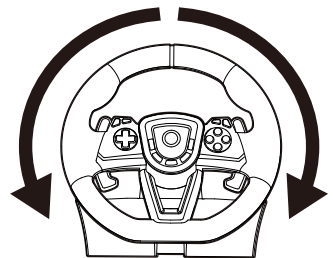


2

Turn the steering wheel fully to the right, then fully to the left.
(This ensures proper wheel calibration.)

Please perform this before each of the following actions:

- After connecting the product to the Nintendo Switch™
- After turning on the Nintendo Switch™
- After deactivating the sleep mode



Adjustable Sensitivity

Steering wheel sensitivity is adjustable to seven levels.
The LED (L) color will change to indicate the sensitivity value.



Sensitivity value	1	2	3	4	5	6	7
LED color	Green	Yellow	Red	Purple	Blue	Light Blue	White

	Operation	LED Status	Setting Status
①	<p>Hold ASSIGN Button for 3 seconds</p>	<p>LED (R) will flash (slowly).</p>	
②	<p>Press + Button</p>	<p>LED (R) will flash (quickly).</p>	<p>Start setting</p> <ul style="list-style-type: none"> Button input from the controller to the Nintendo Switch™ will be disabled.
③	<p>Set Directional Pad Control Toggle Switch to LS.</p> <p>DP LS RS</p>	<p>LED (L) colour will change according to setting and chart above.</p>	
④	<p>Increase sensitivity</p> <p>Decrease sensitivity</p>	<p>LED (L) colour will change according to setting and chart above.</p>	<p>Sensitivity value increases by pressing up on the Directional Pad.</p> <p>Sensitivity value decreases by pressing down on the Directional Pad.</p>
⑤	<p>Press ASSIGN Button</p>	<p>LED (R/L) will turn off.</p> <ul style="list-style-type: none"> The Program LED (R) will light green when assigning buttons. 	<p>Finish setting</p>

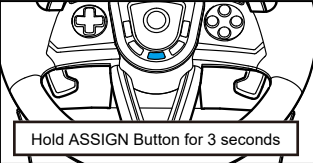
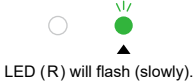


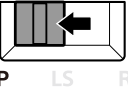




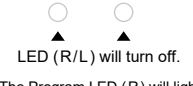
- If you do not perform step ② after ①, the LED (R) will turn off after four seconds and Adjustable Sensitivity setting mode will automatically end.
- Controller settings are stored even if the USB is disconnected.

Adjustable Dead Zone

The dead zone play of centered wheel is adjustable to seven levels.
LED (L) color will change to indicate the dead zone value.



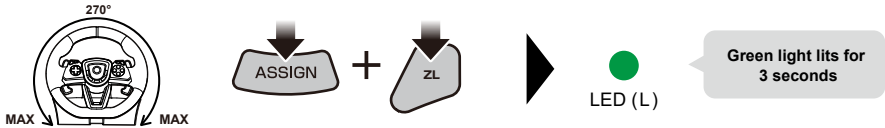
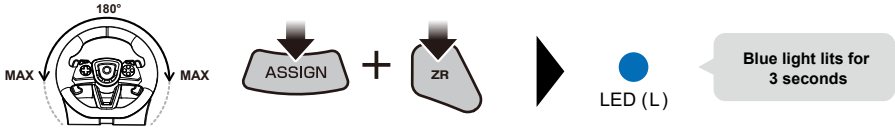
Dead zone value	1	2	3	4	5	6	7
LED color	Green	Yellow	Red	Purple	Blue	Light Blue	White

	Operation	LED Status	Setting Status
①	 <p>Hold ASSIGN Button for 3 seconds</p>	 <p>LED (R) will flash (slowly).</p>	
②	 <p>Press + Button</p>	 <p>LED (R) will flash (quickly).</p>	<p>Start setting</p> <ul style="list-style-type: none"> Button input from the controller to the Nintendo Switch™ will be disabled.
③	<p>Set Directional Pad Control Toggle Switch to DP.</p>  <p>DP LS RS</p>	 <p>LED (L) colour will change according to setting and chart above.</p>	
④	<p>Dead zone value increases</p>  <p>Dead zone value decreases</p>	 <p>LED (L) colour will change according to setting and chart above.</p>	<p>Dead zone value increases by pressing up on the Directional Pad.</p> <p>Dead zone value decreases by pressing down on the Directional Pad.</p>
⑤	 <p>Press ASSIGN Button</p>	 <p>LED (R/L) will turn off.</p> <ul style="list-style-type: none"> The Program LED (R) will light green when assigning buttons. 	<p>Finish setting</p>

- If you do not perform step ② after ①, the LED (R) will turn off after four seconds and Adjustable Dead Zone setting mode will automatically end.
- Controller settings are stored even if the USB is disconnected.

Quick Handling Mode

Experience quicker handling by switching the max steering output from 270 degrees to 180 degrees.



- Controller settings are stored even if the USB is disconnected.

Adjustable Sensitivity / Adjustable Dead Zone / Quick Handling Mode Reset Back to Default Settings

To simultaneously reset all of the following : Sensitivity Adjustment • Dead Zone Adjustment • Quick Handling Mode.

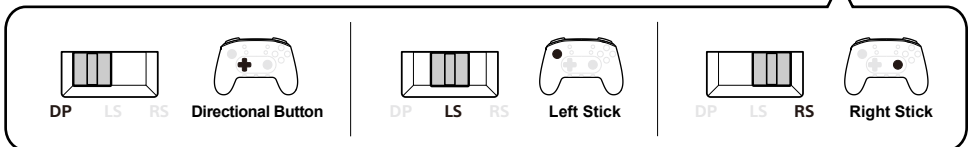
Operation	LED Status	Setting Status
<p>①</p> <p>Hold ASSIGN Button for 3 seconds</p>	<p>LED (R) will flash (slowly).</p>	
<p>②</p> <p>Press - Button</p>	<p>LED (R) will turn off.</p> <ul style="list-style-type: none"> • The Program LED (R) will light green when assigning buttons. 	<p>All settings will return to default.</p> <ul style="list-style-type: none"> • Dead zone and sensitivity default values are set to "4". • When Quick Handling Mode is cancelled, steering wheel input value will default to 270°.

- If you do not perform step ② after ①, the LED (R) will turn off after four seconds and setting mode will automatically end.

Directional Pad Control Toggle Switch

Directional Pad controls can be set to directional buttons, left stick, or right stick controls.

- Directional Pad cannot be set to analog functionality.
- The Directional Pad Control Toggle Switch may not be compatible with some software titles. Please refer to the software's instruction manual for further information.



Assign Mode

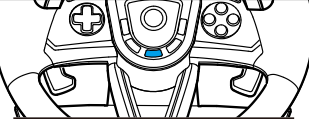






You can remap the function of buttons using this feature.

Programmable Buttons

L Paddle / R Paddle / L Pedal / R Pedal / L Stick Button / R Stick Button / ZL Button / ZR Button / ITEM Button

Assignable Functions

A Button / B Button / X Button / Y Button / L Button / R Button / ZL Button / ZR Button / L Stick Button / R Stick Button / Directional Button (Right / Down / Left / Up) / Left Stick (Right / Down / Left / Up) / Right Stick (Right / Down / Left / Up)

Operation	LED Status	Setting Status
<p>①</p>  <p>Hold ASSIGN Button for 3 seconds</p>	 <p>LED (R) will flash (slowly).</p>	
<p>②</p> <p>Push Programmable Button to assign</p>  <p>L Paddle / R Paddle / L Pedal / R Pedal / L Stick Button / R Stick Button / ZL Button / ZR Button / ITEM Button</p>	 <p>LED (R) will flash (quickly).</p>	<p>Start setting</p> <ul style="list-style-type: none"> Button input from the controller to the Nintendo Switch™ will be disabled.
<p>③</p> <p>Push desired Assignable Function</p>  <p>A Button / B Button / X Button / Y Button / L Button / R Button / ZL Button / ZR Button / L Stick Button / R Stick Button</p>  <p>Directional Button (Right / Down / Left / Up) / Left Stick (Right / Down / Left / Up) / Right Stick (Right / Down / Left / Up)</p>	 <p>LED (R) will turn on.</p>	<p>Finish setting</p>



For step 3, to assign a specific direction input of the Left Analog Stick to a button, set the Directional Pad Control Toggle Switch (DP/LS/RS) to [LS] and press the D-Pad in the direction you want to assign. For Right Analog Stick, set to [RS].



Directional Button
(Right / Down / Left / Up)



Left Stick
(Right / Down / Left / Up)



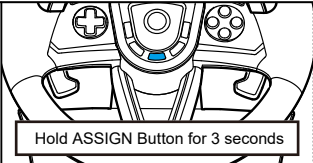

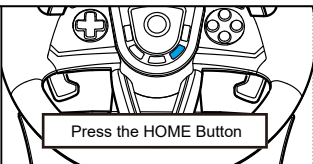

Right Stick
(Right / Down / Left / Up)

- Multiple functions cannot be assigned to a single button.
- Capture Button / + Button / - Button / HOME Button / ASSIGN Button functions cannot be assigned.
- If you do not perform step ② after ①, the LED (R) will turn off after four seconds and assignment mode will automatically end.
- When the LED (L) turns on, it indicates that a button is remapped and will not turn off until button function is reset to default.
- Controller settings are stored even if the USB is disconnected.

How to Reset Buttons Individually

Use the Step 3 above to individually reset buttons to default.

How to Reset All Buttons

Operation	LED Status	Setting Status
①  Hold ASSIGN Button for 3 seconds	 LED (R) will flash (slowly).	
②  Press the HOME Button	 LED (R) will turn off.	All button assignments will reset to its default settings.



When playing Mario Kart™ 8 Deluxe ITEM Button Hold Function

Push and hold the ITEM Button to Hold items behind your character.

How to Enable



ITEM Button
Press for 1 second




LED (L)

Red LED turns on

How to Disable



Press Once :
ITEM Button / ZL Button /
L Paddle




LED (L)

Red LED turns off

- To hold an item such as a Red Shell behind your character, press and hold the ITEM Button for 1 second, then release the ITEM Button.
- The current item will stay behind your character, protecting you from some approaching projectiles. The red LED on the racing wheel will turn on to indicate that Item Hold Mode is activated.
- To use the held item, press the ITEM Button, Left Paddle, or ZL Button. The red LED will then turn off.
- Note: If the item is destroyed by an attack while in Item Hold Mode, press the ITEM Button, Left Paddle or ZL Button to deactivate Item Hold Mode.
- ITEM Button Hold Function will be disabled if ITEM Button is assigned to a different function. (See Assign Mode, Pg.12)

Main Features

Steering Unit

External Dimensions	: W 11 × D 10.8 × H 10.6 in / W 28 × D 27.5 × H 26.8 cm
Steering Diameter	: 11 in / 28 cm
Angle of Rotation	: 270°
Weight	: 3.08 lbs / 1.4 kg
Connection Type	: USB Type-A
Cable Length	: 10 ft / 3 m

Foot Pedals

External Dimensions	: W 9.2 × D 12 × H 5.9 in / W 23.4 × D 30.5 × H 15 cm
Weight	: 1.98 lbs / 0.9 kg
Cable Length	: 5 ft / 1.5 m

For more information please visit this website.



<https://stores.horiusa.com/nsw-429U/>

THE FCC WANTS YOU TO KNOW

This device complies with part 15 of the FCC Rules. Operation is subject to the following two conditions: (1) This device may not cause harmful interference, and (2) this device must accept any interference received, including interference that may cause undesired operation.

NOTE: This equipment has been tested and found to comply with the limits for a Class B digital device, pursuant to part 15 of the FCC Rules. These limits are designed to provide reasonable protection against harmful interference in a residential installation. This equipment generates, uses and can radiate radio frequency energy and, if not installed and used in accordance with the instructions, may cause harmful interference to radio communications. However, there is no guarantee that interference will not occur in a particular installation.

If this equipment does cause harmful interference to radio or television reception, which can be determined by turning the equipment off and on, the user is encouraged to try to correct the interference by one or more of the following measures:

- Reorient or relocate the receiving antenna.
- Increase the separation between the equipment and receiver.
- Connect the equipment into an outlet on a circuit different from that to which the receiver is connected.
- Consult the dealer or an experienced radio/TV technician for help.

CAN ICES-003(B) / NMB-003(B)

This Class B digital apparatus complies with Canadian ICES-003.
Cet appareil numérique de la classe B est conforme à la norme NMB-003 du Canada.

Simplified Declaration of Conformity

Hereby, HORI declares that this product is in compliance with Directive 2014/53/EU.
The full text of the EU declaration of conformity is available at the following internet address:
<https://hori.co.uk/consumer-information/>

For UK: Hereby, HORI declares that this product is in compliance with the relevant statutory requirements.
The full text of the declaration of conformity is available at the following internet address:
<https://hori.co.uk/consumer-information/>

PRODUCT DISPOSAL INFORMATION

Where you see this symbol on any of our electrical products or packaging, it indicates that the relevant electrical product or battery should not be disposed of as general household waste in Europe. To ensure the correct waste treatment of the product and battery, please dispose of them in accordance with any applicable local laws or requirements for disposal of electrical equipment or batteries. In so doing, you will help to conserve natural resources and improve standards of environmental protection in treatment and disposal of electrical waste.



US

Warranty

HORI warrants to the original purchaser that the product purchased new in its original packaging shall be free of any defects in material and workmanship for a period of 90 days from the original date of purchase.
If the warranty claim cannot be processed through the original retailer, please address directly to HORI at info@horiusa.com.
Please visit <https://stores.horiusa.com/policies/> for warranty details.

EU

Warranty

For all warranty claims made within the first 30 days after purchase, please check with the retailer where the original purchase was made for details.
If the warranty claim cannot be processed through the original retailer or for any other inquiries pertaining to our products, please address directly to HORI at info@horiuk.com.

- Actual product may differ from image.
- The manufacturer reserves the right to change the product design or specifications without notice.
- Nintendo Switch is a trademark of Nintendo. © 2023 Nintendo.
- HORI & HORI logo are registered trademarks of HORI.
- All other trademarks are the property of their respective owners.