

# VELOCIPTOR

**ES 106 EW**



Thank you for purchasing the electric scooter  
VELOCIPTOR RACER 2  
Please read the manual before using the product, and  
keep it in a safe place for future reference.



Note on the user guide .....	4
Warnings .....	5
Installation of the handlebar .....	6
Open and fold the scooter .....	7
Come ricaricare la batteria .....	8
Autonomy of VELOCIPTOR RACER 2 .....	8
Display .....	9
Handlebar controls .....	10
Cruise control .....	11
Application for scooter control .....	11
How to use the scooter .....	13
Technical specifications .....	13
Current legislation in Italy .....	14
Information to users of household appliances .....	15
Warranty .....	16

## NOTE ON USER GUIDE

This manual provides the user a description of the characteristics and operation.

The use of the vehicle is the sole responsibility of the driver who, after reading and understanding this manual, and after asking the seller and / or the manufacturer for any clarifications deemed necessary, considers himself suitable from a psychological and physical point of view to the use of the vehicle.

The manufacturer declines any responsibility for damages of any kind and entity caused to people or things as a result of using the vehicle.

The manufacturer reserves the right to make changes to the manual and the product without prior notice.

### Charger specification

Manufacturer: Shenzhen Fuyuandian Power Co., Ltd

Model: FY-4202000

Input voltage and frequency: 100-240V ~ 50 / 60Hz, 2.5A

Output voltage and current: 42V --- 2A

Output power: 84W

Average active return: 89%

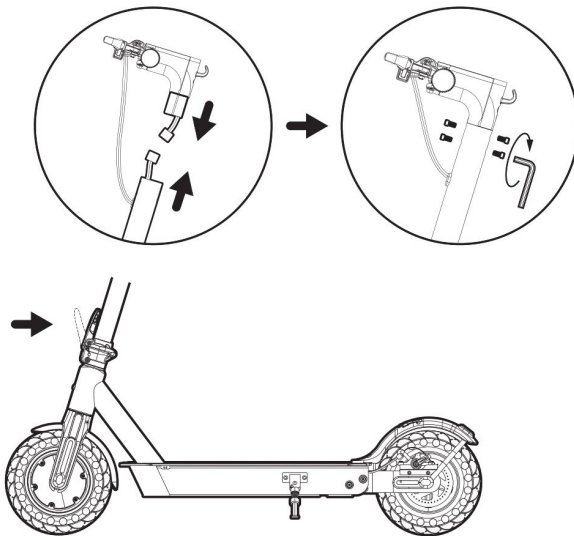
Power absorbed in no-load condition: 0.10 W

## WARNINGS

- Use only the supplied power adapter.
- The use of VELOCIPTOR RACER 2 by minors must always be supervised by an adult.
- Do not drive VELOCIPTOR RACER 2 with more than one person on the platform, as it may cause loss of control of the vehicle.
- Do not use VELOCIPTOR RACER 2 in dangerous situations for your personal safety and that of those close to you.
- Do not use the vehicle after drinking alcohol, taking exciting or psychotropic substances that can alter the emotional state, the sensory abilities and the mastery of the movements.
- Always use suitable clothing that does not hinder your movements and flat shoes (possibly sports shoes with a non-smooth rubber surface) that ensure the necessary grip and stability.
- As any means of locomotion, the use of VELOCIPTOR RACER 2 carries the risk of injury for those who use it and for other people nearby, due to accidental falls or impacts. It is therefore necessary to always wear adequate protections (such as a bicycle helmet, knee pads, elbow pads) and pay the utmost attention not to damage people and things.
- VELOCIPTOR RACER 2 is not a toy.
- VELOCIPTOR RACER 2 has a degree of resistance to water and dust (Water & Dust Proof) which makes its use possible in the presence of accidental and non-persistent splashes. Therefore it is not allowed to use VELOCIPTOR RACER 2 in the presence of stagnant water, puddles or adverse weather conditions (such as rain, snow or hail). Use VELOCIPTOR RACER 2 in dry environments to avoid damage to the motor and electrical circuits.
- Do not try to disassemble the product or its parts. Any repairs must be carried out by authorized personnel, in compliance with the warranty conditions.
- Before cleaning the device, disconnect the power supply. To clean, use a cloth slightly moistened with water or a solution suitable for cleaning such devices. Do not use alcohol or benzene. When finished, dry immediately with a soft cloth.
- Periodically check the correct tightening of all the screws present, to check the absence of yokes on the handlebars and mechanical parts, the correct adjustment of the brake and the functioning of the front / rear lights.

## INSTALLATION OF THE HANDLEBAR

1. Insert the handlebar into the vehicle frame;
2. After matching the holes in the handlebar with those in the frame, insert the screws and tighten them well; repeat the operation also on the opposite side of the handlebar by inserting a total of 4 screws.



# OPEN AND FOLD THE SCOOTER

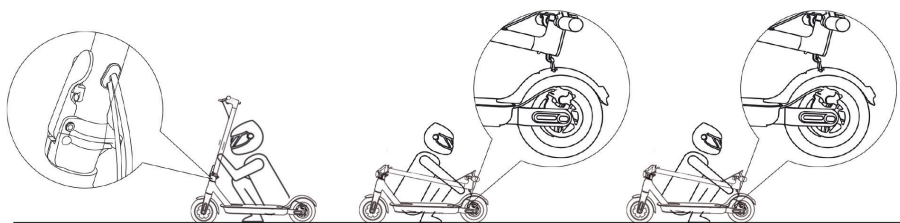


## VELOCIPTOR ES 106 EW FOLDING

1. Release the locking lever located on the lower part of the handlebar support tube, by pulling the release lever upwards and pulling the hook outwards;
2. Fully open the release lever, bringing it to 90 ° with respect to the support tube;
3. Move the handlebar tube towards the rear wheel;
4. The handlebar is equipped with a hook; hook the handlebar onto the appropriate support, located on the rear fender;
5. The scooter can now be transported grasping the handlebar support tube

## UNFOLDING VELOCIPTOR ES 106 EW

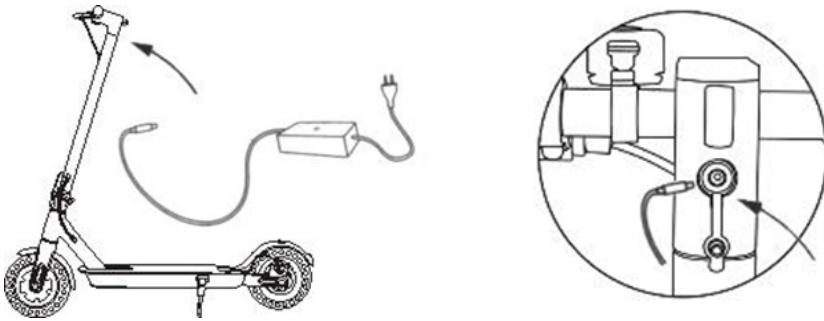
1. With the scooter closed and the handlebar hooked to the rear mudguard, release the handlebar using the hook located on the handlebar itself;
2. Raise the handlebar to the vertical position;
3. Carefully close the locking lever, located at the bottom of the handlebar support tube.



## HOW TO RECHARGE THE BATTERY

To recharge the battery, simply insert the charger connector into the space under the handlebar as shown in the illustration. Open the rubber cap, insert the connector first, then connect the charger to the power outlet. Once charging is complete, close the rubber cap

NOTE: the battery must be charged every 30 days, even if the scooter is not used; if the battery is not charged regularly, it will lose efficiency until it is completely discharged; in this case, we will not be able to offer the product warranty.



## AUTONOMY VELOCIPTOR RACER 2

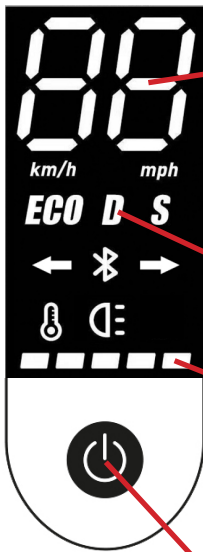
The distance that can be traveled with a single charge is up to a maximum of 38 km. However, this value should be considered indicative as it can be influenced by numerous factors.

The factors that can most affect battery life include the following:

- **Transported weight:** other conditions being equal, a greater transported weight will lead to a reduction in the battery autonomy.
- **Surface:** flat and sliding surfaces are less wasteful for the battery compared to uneven terrain, with slopes or that present substantial friction.
- **Speed and driving style:** a pace with frequent acceleration and braking will discharge the battery faster than a regular and uniform pace.
- **Correct use and maintenance of the battery:** a correct management of the charge and discharge cycles of the battery (see paragraph "How to recharge the battery") will help to keep the full efficiency of the battery longer and delay its natural decay.
- **Environmental conditions:** the presence of wind or use at low temperatures lead to a reduction in battery life.



## DISPLAY



Speed indicator Km / h

Speed level:

- ECO (no icon):  
Speed limited to 6 Km / h maximum
- D (Drive, green S icon):  
Maximum speed around 20 Km / h
- S (Sport, red S icon):  
Maximum speed around 25km / h

LED battery level indicators

Multi-function button: on / off light,  
speed limiter, engine on / off

## MULTIFUNCTION BUTTON

### Turning VELOCIPTOR ES 106 EW on and off

To turn the scooter on and off, press the multi function button for approximately two seconds.

### Turn on the front and rear LED light

VELOCIPTOR ES 106 EW is equipped with front and rear LED lights. Press once the multi function button to turn on / off both LED lights. Note: The front LED is white and the rear LED is red. Pressing the brake will make the rear LED flash

### Activate / deactivate speed level

To set the maximum speed level:

ECO: 6Km / h, D: 20Km / h, S: 25Km / h, quickly press the button twice until the indicator corresponding to the desired speed level lights up.

Activate / deactivate speed level To set the maximum speed level: ECO:

6Km / h, D: 20Km / h, S: 25Km / h, quickly press the button twice until the indicator corresponding to the desired speed level lights up.

## HANDLEBAR CONTROLS



front electronic brake control and the turning lights control.

rear disc brake lever and the accelerator.

On the handlebar right side, you can find the rear disc brake lever and the accelerator.

On the left side, you will find the front electronic brake control and the turning lights control. By pressing the electronic brake button, the front brake is activated; pressing the button with the arrow pointing right, the right arrow lights up, and vice versa.

## CRUISE CONTROL

The scooter is also equipped with the cruise control function.

In case of particularly long journeys at a constant speed, this mode allows you to fix a certain speed that is maintained throughout the journey. The function is activated by maintaining a constant speed for about 5 seconds: Velociptor Racer emits a sound and the scooter maintains the speed, even in the presence of uphill or downhill.

Pressing the brake or accelerator allows you to disengage the cruise control.

## APPLICATION FOR SCOOTER CONTROL

Some functions of the scooter can be controlled via an app called MINIROBOT.

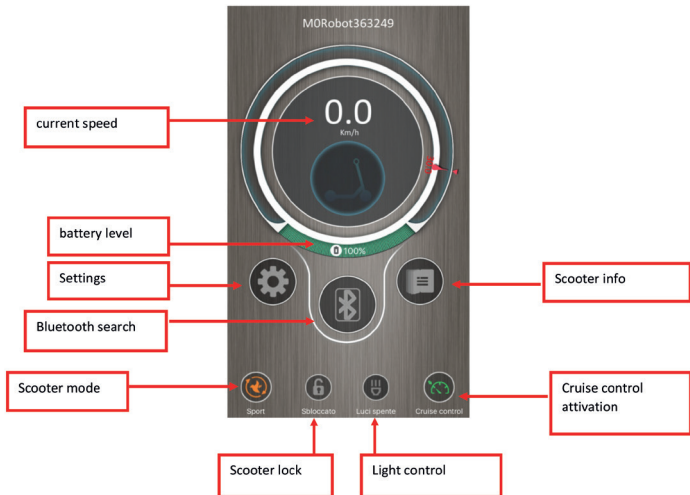
The app for Android phones can be downloaded from the Google Play Store, while the one for iPhones can be downloaded from the Apple Store.

### CONNECTION OF THE SCOOTER

1. Activate Bluetooth on your phone
2. Start the MINIROBOT application, previously downloaded
3. Turn on the scooter; the application will search for available Bluetooth devices nearby
4. If necessary, choose the scooter code in the list of detected devices at the bottom of the phone screen (M0Robot or similar).



After connection, the basic scooter control screen will appear



On first use, we recommend pressing the Settings button and set the battery capacity to 10 Ah. This will allow a better calculation of the residual distance that the scooter can travel.



**Scooter mode:** Allows you to switch between walking mode (6 Km/h), normal or Sport. While driving, it is advisable to use the button on the handlebar, for safety reasons, and not the application.

**Scooter lock:** you can lock or unlock the scooter, so that it cannot be used by other people; if locked, the scooter does not accelerate even if the accelerator is pressed.

**Light control:** front and rear lights on or off

**Scooter information:** information is displayed on the app

## HOW TO USE THE SCOOTER

First of all, it is advisable to adjust the rear disc brake, tightening it or making it softer, according to your driving style.

Start the engine by pressing the ignition button.

Get on the scooter and make sure the stand is in the closed position; act gently on the accelerator lever to start the electric motor.

To brake, release the accelerator, in order to make the engine brake act, or, for harder braking, use the rear disc brake lever or front electronic brake.

## TECHNICAL SPECIFICATIONS

- Aluminum frame
- Max load: 100 Kg
- Motor Power: 500 W
- Battery: 36 V - 10 Ah - 360 Wh
- Charging time: about 5 hours
- Wheels: 10 inch honeycomb
- Handlebar integrated display
- 3 speed levels: 6-20-25 Km/h (check speed limit in your country)
- Rear shock absorber
- Rear disc brake and front electronic brake
- Front and rear led light
- Deck led light
- Turning lights
- Charger included
- INPUT 100-240 V ~ 50/60 Hz,
- OUTPUT 42 V --- 2 A
- BT transmission frequency: 2.4GHz
- BT transmission power: 0.8mW

## EXTRACT FROM CURRENT LEGISLATION IN ITALY

Since the kick scooter is considered as a velocipede in the current legislation, it is not subject to any provisions relating to homologation, approval, registration, plate information or insurance coverage.

Electric scooters can be used on urban roads with a speed limit of 50 km/h where the circulation of velocipedes is allowed, and on suburban roads only within the cycle path on the road side. On urban roads, it should circulate on cycle paths, if present.

Electric Scooter drivers:

- cannot exceed 20 km / h when driven on the road and 6 km / h when driven in pedestrian areas.
- must proceed aligned in all cases where traffic conditions require it, and in any case when more than two people.
- if underage, they must wear suitable protective helmet.
- their arms and hands must be free, and must always hold the handlebar with both hands, unless it is necessary to show the left or right turn
- must be able to see freely in front of them, both sides, and drive the scooter with the maximum freedom.
- must wear the high-visibility retro-reflective jacket or braces from half an hour after sunset, during the whole period of darkness and during the day, if weather conditions require to turn the lights on.
- cannot transport other people, objects or animals, tow vehicles or animals or be towed by another vehicle.

The scooter must not be equipped with a seat for the user, because it is intended for use with standing posture.

The scooter must be equipped with a speed limiter that does not allow them to exceed 20 km / h when they travel on the roadway and 6 km / h when they travel in pedestrian areas.

The scooter must be equipped with a bell for acoustic signals.

As part of the experimentation of road traffic, scooters can only be driven by adults aged at least 18 years old, or by more than 14 years old with the obligation to use a suitable helmet.

Although not expressly referred to by the new regulation, given that electric scooters are considered velocipedes and are therefore considered vehicles, the general rules of conduct of the traffic laws will apply.

Source: Ministry of Interior - Public Security Department

Always check for possible updates to specific rules or regulations issued by local authorities.

**The manufacturer declines all responsibility in the event of damage to persons or things that occur as a result of using the product**

## INFORMATION TO USERS ABOUT HOUSEHOLD APPLIANCES

### Precautions for correct disposal of the product.

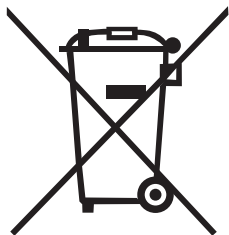
The symbol shown on the equipment indicates that waste must be disposed of in "separate collection" and so the product must not be disposed of together with urban waste.

The user must take the product to special "separate waste collection centres" provided by local government, or deliver it to the retailer against the purchase of a new product.

Separate collection of waste and subsequent treatment, recycling and disposal operations promotes the production of equipment with recycled materials and limits negative effects on the environment and on health caused by improper handling of waste.

Illegal disposal of the product leads to the enforcement of administrative penalties.

The product works with batteries that fall under the European directive 2013/56 / EC and that cannot be disposed of with normal household waste. Please inform yourself about the local directives regarding the separate collection of batteries: a correct disposal allows to avoid negative consequences for the environment and health.



### TECHNICAL ASSISTANCE

Product technical assistance is guaranteed by:

**Trevi S.p.a. Technical assistance**

Via Raibano 40, 47853 Coriano (Rimini) Italy

Web:

[www.velociptor.it](http://www.velociptor.it)

[www.emgmobility.it](http://www.emgmobility.it)



## WARRANTY

1. The warranty comes into force on the date of the tax document and covers manufacturing defects and consequent failures that arose during the warranty period.
2. In the event of a device failure, the buyer can ask for assistance contact the retailer where you purchased the product or:  
**center Trevi S.p.a. Technical Assistance, Via Raibano 40, 47853 Coriano (Rimini) Italy - Tel . | Web: [www.velociptor.it](http://www.velociptor.it) / [www.emgmobility.it](http://www.emgmobility.it)**
3. In order for the warranty to be valid, the buyer must present a valid proof of purchase of the product for which he intends to request assistance (invoice or sales receipt in which an identification code and product description are expressly indicated) , together with this warranty certificate.
4. The external parts of the appliance, components and accessories purchased separately, parts and components which by their nature are subject to wear and tear, decay, and therefore require periodic maintenance and / or replacement (for example cables) are not covered by the warranty. power supply, power supplies / battery charger, batteries, wheels, cases, etc ...).

The guarantee does not cover direct and indirect damages, suffered by the user or by third parties, deriving from knocks and falls (even accidental), misuse by the user, use in an unsuitable environment, other components, atmospheric agents, sudden changes in tension, fires. The warranty does not cover those marginal aesthetic defects that have a negligible effect on the value or functionality of the product. Except as otherwise prescribed in other parts of this certificate, the warranty automatically lapses in the following cases:

- a) if the serial number of the device is removed, modified or made unrecognizable;
- b) in the event of tampering, alteration, replacement, repair, attempted repair, disassembly (even partial) of the product carried out by unauthorized personnel;
- c) in case of tampering or other violation of the integrity of the warranty seals placed on the product;
- d) in the event of use that does not comply with current legislation <applicable to the product covered by the warranty.

The recognition of direct and indirect damages of any kind to persons and things deriving directly or indirectly from one or more causes of exclusion mentioned in this paragraph is also excluded.



## WARRANTY

5. The mere authorization to send the product to the service center does not imply that the defect has been recognized as covered by the warranty with consequent free repair of the product. The product must be shipped in the original packaging, or in another suitable packaging, and in any case inserted in a protective packaging that is suitable for shipment by courier or postal service. Until delivery to the service center, the goods travel at the sender's risk. The warranty does not cover any damage that may have occurred during transport to the service center. The service center reserves the right to check the validity conditions of the guarantee upon receipt of the product. For requests for warranty assistance which, following verification by authorized service personnel, should prove to be unfounded due to the absence of real defects or due to the absence of defects covered by the guarantee, all costs incurred for the repair will be charged to the customer, the verification and controls on defect-free units covered by warranty. The customer will also be charged for all transportation costs.

6. If parts or components under warranty are replaced, the parts removed and replaced will become the property of the service center. In the event that the repair is not physically possible, or is excessively expensive in relation to the value of the product, this can be replaced with a product with equivalent or superior technical characteristics.

7. The manufacturer is not responsible for any damage or loss resulting from the failure to use a product for repair, or for any damage or loss resulting from the malfunction of the product or some of its parts.

8. The period of validity of the battery warranty (if any) is 6 months from purchase.

9. The period of validity of the guarantee for consumers, that is, those who buy for purposes unrelated to one's professional or business activity, it is governed by Legislative Decree 2 February 2002, n.24. - articles 1519-bis and following of the Italian Civil Code - (2 years from delivery under legal conditions). For buyers who purchase with a VAT number for purposes related to their professional activity, the legal guarantees referred to in articles 1490 and following of the Civil Code will apply (1 year from delivery under the conditions of the law).



Trevi S.p.A.Strada Consolare Rimini-San Marino 62, 47924 Rimini (RN) Italia

Made In China