



4K Ultra HD Android TV Box

SRT202EMATIC



User Manual



Supplied by STRONG Austria
Represented by
STRONG Ges.m.b.H.
Franz-Josefs-Kai 1
1010 Vienna
Austria
Email: support_at@strong.tv

TABLE OF CONTENTS

1.0 INTRODUCTION	2
1.1 Safety Instructions	2
1.2 Equipment Set-up	3
1.3 Package content	3
1.4 Usage of external USB devices	4
2.0 TV BOX PANELS	4
2.1 Front Panel	4
2.2 Rear Panel	5
2.3 Remote control	5
2.4 Installing the batteries	6
3.0 CONNECTION GUIDE	6
4.0 SETTING UP YOUR DEVICE	7
5.0 SETTINGS	9
6.0 DOWNLOADING APPS	12
7.0 USE YOUR SMARTPHONE AS REMOTE	12
8.0 GOOGLE CAST	13
9.0 GOOGLE ASSISTANT	13
10.0 SIMPLE TROUBLESHOOTING	15
11.0 TECHNICAL SPECIFICATIONS	16

SIMPLIFIED EU DECLARATION OF CONFORMITY

Hereby, STRONG declares that the device SRT202EMATIC is in compliance with Directive 2014/53/EU.

The full text of the EU declaration of conformity is available at the following internet address: <https://www.strong.tv/en/doc>

Subject to alterations. In consequence of continuous research and development technical specifications, design and appearance of products may change. Google, Android, Android TV, Chromecast and other related marks and logos are trademarks of Google LLC. Wi-Fi is a registered trademark of Wi-Fi Alliance®. Skype is a trade mark of Skype and STRONG is not affiliated, sponsored, authorised or otherwise associated by/with the Skype group of companies. The terms HDMI and HDMI High-Definition Multimedia Interface, and the HDMI logo are trademarks or registered trademarks of HDMI Licensing Administrator, Inc in the United States and other countries. Manufactured under licence from Dolby Laboratories. Dolby Audio and the double-D symbol are registered trademarks of Dolby Laboratories. All other product names are trademarks or registered trademarks of their respective owners.




© STRONG 2019. All rights reserved.

1.0 INTRODUCTION

Thank you for choosing the 4K Ultra HD Android TV Box supplied by STRONG. It has been produced with the latest new technology and offers extensive entertainment and great versatility. We wish you many hours of new great experiences exploring the Android world!

1.1 Safety Instructions

Read all of the instructions before operating the device. Keep these instructions well for later use.

- Only use attachments/accessories specified or provided by the manufacturer (such as the exclusive supply adapter, battery etc.).
- Please refer to the information on the product enclosure for electrical and safety information before installing or operating the apparatus.
- To reduce the risk of fire or electric shock, do not expose this apparatus to rain or moisture.
- The ventilation should not be impeded by covering the ventilation openings with items, such as newspaper, table-cloths, curtains, etc.
- The apparatus shall not be exposed to dripping or splashing and no objects filled with liquids, such as vases, shall be placed on the apparatus.
-  This mark indicates a risk of electric shock.
- To prevent injury, this apparatus must be securely attached to the floor/wall in accordance with the installation instructions.
- Danger of explosion if the battery is incorrectly replaced. Replace only with the same or equivalent types.
- The battery (battery or batteries or battery pack) shall not be exposed to excessive heat such as sunshine, fire or the like.
- Excessive sound pressure from earphones and headphones can cause hearing loss. Listening to music at high volume levels and for extended durations can damage one's hearing.
- In order to reduce the risk of damage to hearing, one should lower the volume to a safe, comfortable level, and reduce the amount of time listening at high levels.
- The mains plug or appliance coupler is used as disconnect device, it shall remain readily operable. When not in use and during movement, please take care of the power cord set, e.g. tie up the power cord set with cable tie or something like that. It shall be free from sharp edges or similar which can cause abrasion of the power cord set. When put into use again, please make sure the power cord is not damaged. The absence of a light indication on the apparatus does not mean that it is fully disconnected from the mains. To disconnect the apparatus completely, the mains plug must be pulled out.
- Attention should be drawn to environmental aspects of battery disposal.
- No naked flame sources, such as lighted candles, should be placed on the apparatus.
-  To prevent the spread of fire, keep candles or other open flames away from this product at all times.
-  Equipment with this symbol is a Class II or double insulated electrical appliance. It has been designed in such a way that it does not require a safety connection to electrical earth.

Precautions

- Never try to open the device. It is dangerous to touch the inside of the device due to high voltages and possible electrical hazards. Opening the device will void the warranty of the product. Refer all maintenance or servicing to suitably qualified personnel.

- When you are connecting cables, be sure that the device is disconnected from the mains supply voltage. Wait a few seconds after switching off the device before you move the device or disconnect any equipment.
- It is a necessity that you only use an approved extension and compatible wiring that is suitable for the electrical power consumption of the installed equipment. Please ensure that the electrical power supply corresponds with the voltage on the electrical identification plate at the back of the device.

Operating Environment

- Do not install this equipment in a confined space such as a bookcase or similar unit.
- Do not use the set near damp, and cold areas, protect the set from overheating.
- Keep away from direct sunlight.
- Do not use the set near dust place.
- Do not place candles near the opening area, to avoid flammable foreign material from entering the device.

WEEE Directive



Correct Disposal of this product. This marking indicates that this product should not be disposed with other household wastes throughout the EU. To prevent possible harm to the environment or human health from uncontrolled waste disposal, recycle it responsibly to promote the sustainable reuse of material resources. To return your used device, please use the return and collection systems or contact the retailer where the

product was purchased. They can take this product for environmental safe recycling.

Storage

Your device has been carefully checked and packed before shipping. When unpacking it, make sure that all the parts are included and keep the packaging away from children. We recommend that you keep the carton during the warranty period, to keep your device perfectly protected in the event of repair or warranty.

1.2 Equipment Set-up

Please follow the instructions below:

Use a high quality, well shielded HDMI cable to watch also in highest screen resolutions.

This user manual provides complete instructions for installing and using this product. The symbols will serve as follows:

WARNING:	Indicates warning information.
TIPS:	Indicates any other additional important or helpful information.
MENU (Bold characters)	Represents a button on the remote control or the product.
<i>Move to</i> (<i>Italic characters</i>)	Represents a menu item within a window.

1.3 Package content

- Android TV Box
- Voice Search Remote
- Power Adapter 5 V / 2 A
- HDMI Cable
- 2x AAA Batteries
- Installation instructions

WARNING:

The batteries should not be recharged, disassembled, electrically short-circuited, be mixed or used with other types of batteries. If rechargeable accumulators instead of batteries are going to be used (e.g. NiMH), we recommend using types with low self-discharge to ensure long time operation of your remote control.

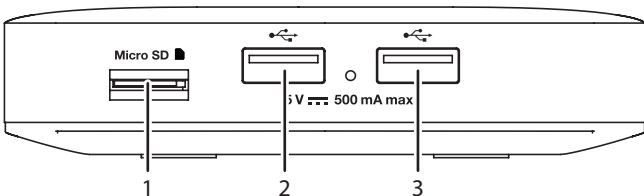
1.4 Usage of external USB devices

- It is recommended to use USB 2.0 storage devices or higher. If your device is not compatible to USB 2.0 specifications, playback and other functions of the product might not work properly.
- STRONG cannot guarantee compatibility with all types of USB devices such as web cams, keyboards, mouse devices, storage devices.
- STRONG cannot guarantee perfect operation when a HDD and a web cam are used at the same time.
- If you are going to use external USB HDDs (Hard Disk Drives), please consider that power specifications may exceed the supported output of your box (max. 5 V/500 mA). If so, please connect your USB HDD to an external power adapter.
- It is advised not to store important information on USB storage devices used with the box. Always make backups of data on your USB storage device before using it with this box. STRONG will not take responsibility for any loss of information or circumstances caused by loss of information.

2.0 TV BOX PANELS

2.1 Front Panel

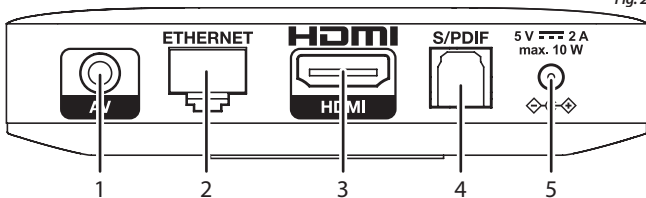
Fig. 1



1. Micro SD Card Slot
2. USB Port
3. USB Port

2.2 Rear Panel

Fig. 2

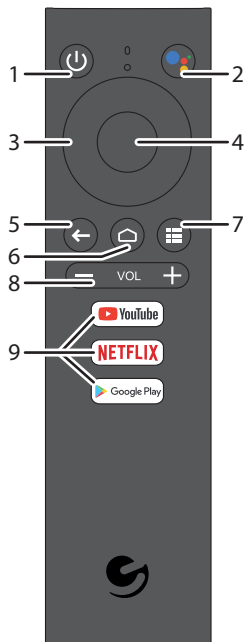


1. AV Output
2. Ethernet
3. TV (HDMI)
4. S/PDIF (optical)
5. DC IN

2.3 Remote control

1. Power ON/OFF
2. Google Assistant
3. ▲/▼/◀▶
4. ENTER
5. BACK
6. HOME
7. ALL APPS
8. Volume
9. Youtube, Netflix, Google Play, Shortcut Buttons

Fig. 3



2.4 Installing the batteries

Fig. 4

Open the cover on the remote control and insert 2x AAA batteries into the compartment. The correct position of batteries polar diagram is shown inside the batteries compartment.

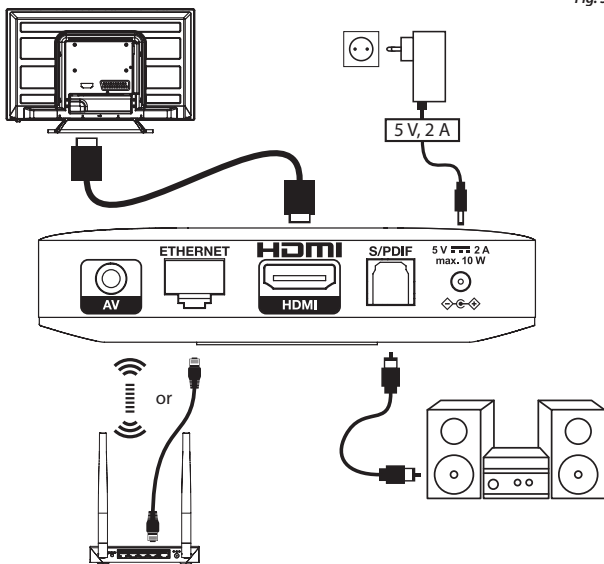
1. Open the cover. 2. Insert the batteries. 3. Close the lid.

WARNING: The batteries should not be recharged, disassembled, electrically short-circuited, be mixed or used with other types of batteries.

3.0 CONNECTION GUIDE

Refer to the diagram below for connecting your Android TV Box to power, network and other devices. (Note: Before getting started, please turn off all devices to be connected.)

Fig. 5



NOTE: The SRT202EMATIC box also supports Wi-Fi. To connect, go to Settings -> Network.

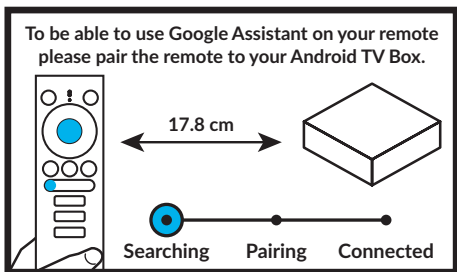
1. Connect the SRT202EMATIC box to your television via the HDMI Cable.
2. Using an Ethernet Cable, connect the LAN Port of the TV Box to the LAN Port of your router or home broadband network.
3. Connect the TV Box to power using the power adapter provided. You can then power on your device and begin.

NOTE: Before turning on your device, please switch the signal output of the TV to the correct source

4.0 SETTING UP YOUR DEVICE

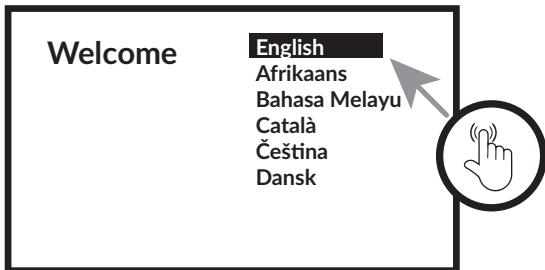
You may turn on your device after properly connecting all hardware.

To be able to use Google Assistant on your remote, you must first pair your Bluetooth Remote to your TV Box. Follow the pairing instruction on the screen.



STEP 1: Language

Select your preferred language on the Welcome Page.



STEP 2: Set up with Android device

Choose whether to set up your TV with an Android device or skip this step. If you choose Yes, please refer to the Bluetooth pairing section of this guide.

Step 3: Wi-Fi

Connect to your Wi-Fi Network. Skip this step if already connected via Ethernet.

Step 4: Google Account

Sign in with your Google Account.

Step 5: Terms of Service & Privacy Policy

Read and accept the Terms of Services & Privacy Policy.

Step 6: Location Settings

Choose whether to allow Google to use your location to improve the experience.

Step 7: Diagnostic Report Settings

Select whether to allow your Android TV to send automatic diagnostic and usage data to Google.

Step 8: Meet your Google Assistant

Turn on the Google Assistant function for the functionality to work on your remote.

Meet your Google Assistant

Continue

Step 9: Name your Android TV Box

Select from the options provided or enter a custom name to identify your device when pairing to other devices.

Step 10: Get Started with Apps

Select apps you would like installed.

STEP 11: Welcome to Android TV

A walkthrough of the features of your device

Chromecast Built-in

Stream your favourite entertainment from your phone, tablet, or laptop right to your TV.



DONE

Click on *DONE* after the walkthrough to start using your device. You are now ready to begin

5.0 SETTINGS

Select Settings to check the device information, add/remove accounts and make changes to the system settings.

Wi-Fi Settings

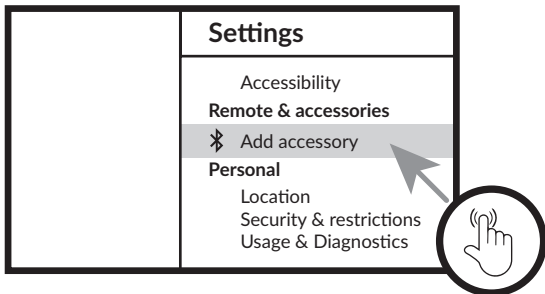
Under Network Settings, select and enable Wi-Fi in order to connect to the network. Once the device scans and lists nearby Wi-Fi networks, select the appropriate network name, if required put in the password and select Connect.

Language Settings

Under Settings > Preferences, select Language to change the language previously set.

Bluetooth Pairing

- Select Settings in the Menu Launcher.
- From the Remote & Accessories menu, click "Add Accessory" then select the device to be connected.

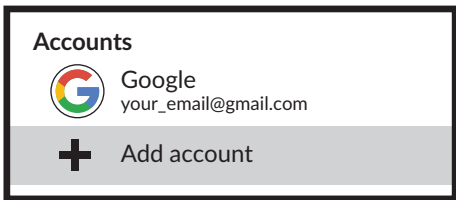


Remove a Bluetooth Device

- Select Settings from the Menu Launcher.
- From the Remote & Accessories menu, click "Unpair", then select the Bluetooth device you want to remove.

Adding Accounts

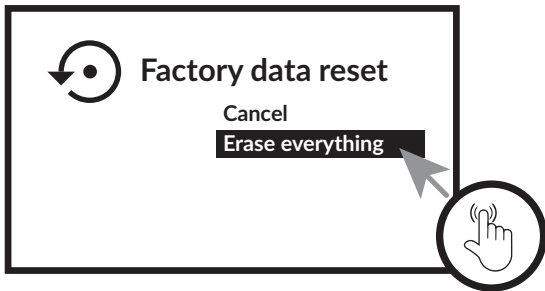
For new Google users: sign up for a new Google account using the TV for easier login and payment security. Add an account or switch accounts under Accounts in the Settings Menu.



Factory Reset

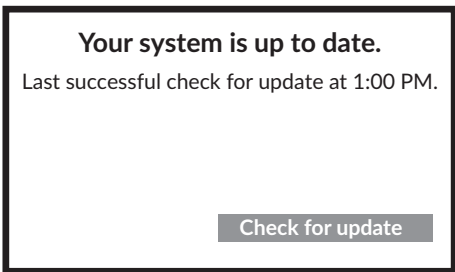
Under Settings, select Storage & Reset.

- Click Factory data reset to erase everything.
- Once this option has been selected, all manually installed apps and user data information will be deleted.



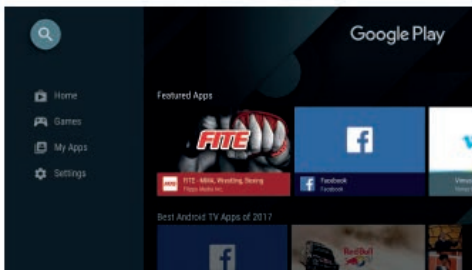
About

You can check information about your device by clicking on [ABOUT] in the Settings Menu. This panel will show you the model of your device, version, firmware version and more. You can also update your system by clicking on System update from this menu.



6.0 DOWNLOADING APPS

All apps are available for download on the Google Play Store. Do not install apps via USB drive, Micro SD card or hard drive.



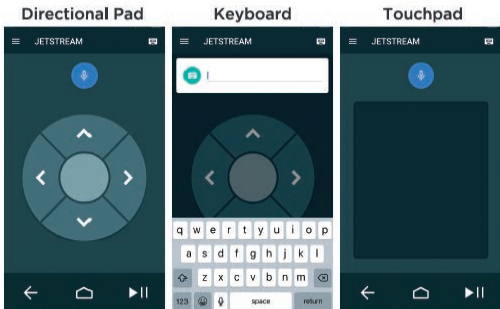
To Access Google Play store:

1. Scroll down to the apps row on your Android TV Home Page.
2. Select the Add Icon [+], then choose the Google Play Store from the list of options. Once the Google Play Store app is added to your Android Home Page, you can open the store to download more apps.

7.0 USE YOUR SMARTPHONE AS REMOTE

Did you know that you can use your smartphone as touchpad to easily navigate your screen, instead of using the remote control buttons? You can even use your smartphone to type in that long movie title you want to search! How?

1. Simply download the Android TV Remote app from the Google Play Store or the App Store on your respective Android or Apple device. (Make sure your phone and the box are connected on the same Wi-Fi network)
2. Search and connect to your Android TV Box then enter the code displayed on the TV on your phone. You may now use your phone as voice search remote.



8.0 GOOGLE CAST

Cast from a Mobile Device

Certain apps allow you to cast to your TV. To cast, simply follow the following steps:

1. Open a Google cast compatible app on your mobile device
2. Navigate to the screen you wish to cast

Cast from Google Chrome

This device has Google Chromecast built-in. To cast from Google Chrome, click the Settings icon []: located on the top right corner of the browser, then click "Cast".

9.0 GOOGLE ASSISTANT

Say it to Play it.

Ask it to play your favorite show, video, or music. Or find the latest blockbuster to enjoy.

Movies & TV shows:

Play Stranger Things on Netflix. Video clips: Play cat videos.

Apps: Open YouTube. Search: Search for sitcoms.

Info: Tell me about Game of Thrones.

Control

Playback: Pause. Stop. Resume

Volume: Louder. Softer. Power: Turn off.

Play music, news, or podcasts

Music: Play music by Sia. (Learn how to choose your music service provider.)

News: Play the news. What's the latest news from BBC?

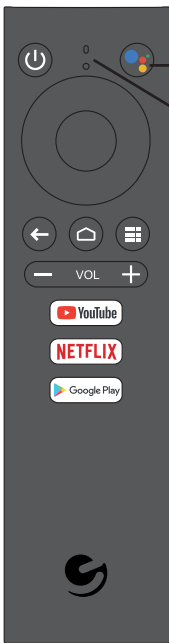
Ask Google

Sports: How did the Patriots do? When is the next Warriors game?

Calculations: What's 20% of 80? Dictionary: What does "ludic" mean?

Find answers: How far away is the moon? How do you remove stains in a rug?

Unit conversions: How many teaspoons in a cup?



To get started, press the **Google Assistant button** on your remote.

Speak into the microphone of your Voice Search remote. Learn more about the Google Assistant on assistant.google.com or say "What can you do?"

NOTE: To be able to use Google Assistant on your remote, you must first pair your Bluetooth Remote to your TV Box.

10.0 SIMPLE TROUBLESHOOTING

Issue	Possible Reason	Solution
No display after power on	The power cord is not properly connected	Make Sure the device is connected to the power
No Sound	Audio cable is not connected. The device is on Mute or the volume is too low.	Reconnect the cable. Press the mute button to restore the sound and increase the volume.
Failed to connect to network	Ethernet cable is not properly connected. Wi-Fi is turned off or the signal is too weak.	Reconnect the cable. Restart the Wi-Fi or adjust the position of the device closer to the router.
Remote Control Failure	The sensors of the remote control and the TV box are not in alignment. Remote control is broken or the batteries are low in power.	Aim the remote's sensor at the front panel's sensor and try again. Check for obstructions blocking the signal path between the remote and the box. Replace batteries or send the device to the local maintenance service station for checking.
No Picture on Screen	HDMI cable is not connected	Make sure that HDMI/AV is selected as your TV input
Voice search on remote is not working	Remote is not paired to the TV Box	See the Pairing Bluetooth Device section in this guide
No Audio	Audio Settings not configured correctly for your TV	Go to Settings > Surround > Surround Sound and choose PCM

11.0 TECHNICAL SPECIFICATIONS

Video decoder

Aspect ratio:	Auto/Full screen
Video resolution:	H.265 10-bit 4K*2K@60fps, VP9 4K*2K @60fps, H.264

Audio decoder

Audio decoding:	Dolby® Digital/ Dolby® Digital Plus*, MPEG1/2/4
Audio mode:	Mono, L/R, Stereo

*Dolby Digital Plus, Dolby Digital and the double-D symbol are registered trademarks of Dolby Laboratories

Connectors

Micro SD
2x USB 2.0 ports
AV
ETHERNET
HDMI
S/PDIF (optical)
DC IN (5 V, 2 A)

General data

Wi-Fi:	IEEE 802.11b/g/n, 2.4 GHz IEEE 802.11a/n/ac, 5 GHz
Bluetooth:	4.2
Power supply:	100 - 240 V AC, 50/60 Hz
Input voltage:	DC 5 V, 2 A
Power consumption working:	7 W (max.)
Power consumption standby:	~ 1.5 W
Dimensions (W x D x H) in mm:	110 x 110 x 24
Weight:	237 g

Data Protection:

Please be aware that STRONG, its manufacturing partners, the application providers and the providers of the services may collect and use technical data and related information, including but not limited to technical information about this device, system and application software and peripherals. STRONG, its manufacturing partners, the application providers and the providers of the services may use such information to improve its products or to provide services or technologies to you, as long as it is in a form that does not personally identify you.

Additionally, please keep in mind that some services provided - already in the device or installed by you - may request a registration for which you have to provide personal data.

Beside that, please be aware that some services which are not pre-installed but can be installed may collect personal data even without providing additional warnings and that STRONG cannot be held liable for a possible breach of data protection by services not pre-installed.

* Availability of apps depending on the country. STRONG cannot be held liable for services by third parties. Offers by third parties may be changed or removed at any time, may not be available in all regions and may require a separate subscription.