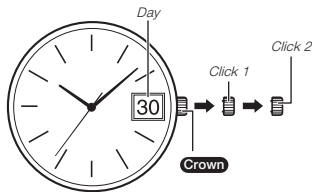


MA1904-EA © 2019 CASIO COMPUTER CO., LTD.

Operation Guide 5359/5448

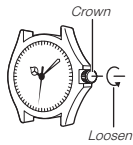
CASIO®

• Your watch may differ somewhat from the one shown in the illustration.



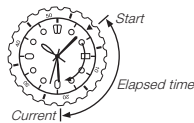
Crown Operations

Some water-resistant models (100 meters, 200 meters) have a screw-in crown. When you need to perform a crown operation, rotate it towards you to unscrew it. Then pull the crown out. Avoid applying undue force when pulling. The watch loses its water resistance while the crown is unscrewed. After performing a crown operation, fully screw the crown back in.



If your watch has a rotary bezel...

You can rotate the bezel to align its ▼ mark with the minute hand. Then you will be able to tell how much time has elapsed since aligning the ▼ mark.



Specifications

Accuracy: ±20 seconds average per month

Battery: Module 5359: One silver oxide battery (Type: SR916SW)
Module 5448: One silver oxide battery (Type: SR920SW)

Battery Life: Approximately 3 years

[Module 5359]

Low Battery Indicator: Second hand moves in 2-second increments when power is low.

Specifications are subject to change without notice.

To adjust the time setting

When the second hand is at 12 o'clock, pull the **Crown** out to Click 2.

Rotate the **Crown** to change the time setting.

Push the **Crown** back in on a time signal to resume timekeeping.

Note

- Take care that you set the correct AM or PM time.
- When changing the time, move the minute hand four or five minutes past your final setting, and then back it up to the setting you want.

To change the day setting

Pull the **Crown** out to Click 1.

Rotate the **Crown** to set the day.

Push the **Crown** back in.

Note

- The day setting uses a 31-day month. Make adjustments for months of shorter lengths.
- Avoid changing the day setting between the hours of 9 p.m. and 1 a.m. Otherwise, the day setting may not change correctly at midnight.