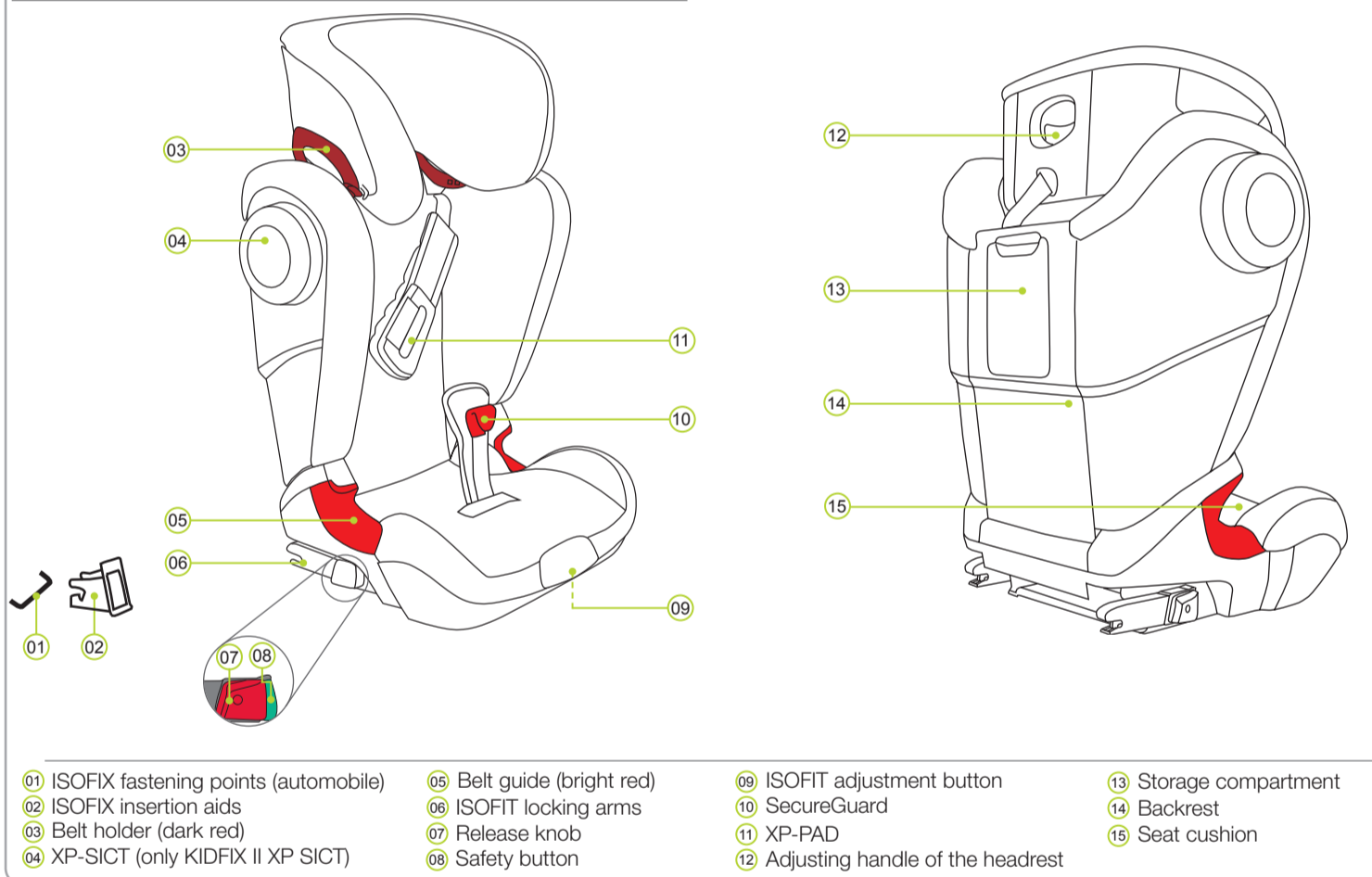


PAGE I

1. PRODUCT OVERVIEW



- 01 ISOFIX fastening points (automobile)
- 02 ISOFIX insertion aids
- 03 Belt holder (dark red)
- 04 XP-SICT (only KIDFIX II XP SICT)
- 05 Belt guide (bright red)
- 06 ISOFIT locking arms
- 07 Release knob
- 08 Safety button
- 09 ISOFIT adjustment button
- 10 SecureGuard
- 11 XP-PAD
- 12 Adjusting handle of the headrest
- 13 Storage compartment
- 14 Backrest
- 15 Seat cushion

2. INTRODUCTION

Thank you for choosing KIDFIX II XP / KIDFIX II XP SICT to keep your child safe through a new stage of their life.

In order to protect your child correctly, the KIDFIX II XP / KIDFIX II XP SICT must always be used and installed as described in these instructions.

If you have any further questions regarding its use, please feel free to contact us:

Britax Childcare
 Britax Römer
 Kindersicherheit GmbH
 Blaubeurer Strasse 71
 D-89077 Ulm
 Germany
 T.: +49 (0) 731 9345-199/-299
 F.: +49 (0) 731 9345-210
 E.: service.de@britax.com
 www.britax.com

Britax Childcare
 Britax Exelsior Limited
 1 Churchill Way West
 Andover
 Hampshire SP10 3UW
 T.: +44 (0) 1264 333343
 F.: +44 (0) 1264 334146
 E.: service.uk@britax.com
 www.britax.com

These instructions use the following symbols stated below:

Symbol	Keyword	Explanation
⚠	DANGER!	Risk of severe personal injury
⚠	WARNING!	Risk of minor personal injury
⚠	CAUTION!	Risk of material damage
ℹ	TIP:	Useful notes

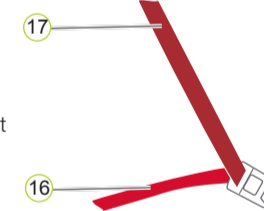
Instructions that follow a set sequence are numbered.

Example:

1. Press the button...

Belt guide colours

For better differentiation, the two vehicle seat belts are highlighted in different colours. The diagonal seat belt (17) in dark red and the lap belt (16) in bright red. The colour of the belt guides on the child safety seat follows the same colour scheme.



3. CERTIFICATION

BRITAX RÖMER Vehicle child safety seat	Testing and certification In accordance with ECE* R 44/04	
	Group	Body weight
KIDFIX II XP	II+III	15 to 36 kg
KIDFIX II XP SICT		

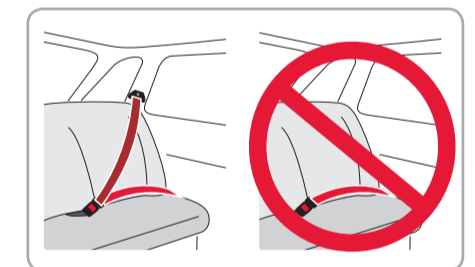
*ECE = European Standard for Child Safety Equipment

The child safety seat has been designed, tested and certified according to the requirements of the European Standard for Child Safety Equipment (ECE R 44/04). The seal of approval E (in a circle) and the approval number are located on the orange approval label (sticker on the child safety seat).

⚠ DANGER! This approval will be invalidated if you make any modifications to the child safety seat. Only the manufacturer is permitted to make modifications to the child safety seat. The child seat is approved for use both with and without XP-PAD.

⚠ WARNING! Use the KIDFIX II XP / KIDFIX II XP SICT exclusively for securing your child in your vehicle. It is in no way suitable as a seat or toy in the home.

⚠ DANGER! Never secure your child or the child safety seat with a 2-point belt. If you secure your child in the child seat with only a 2-point belt, then in the event of an accident this may cause serious injuries to your child, possibly resulting in death.



4. USE IN THE VEHICLE

Please observe the instructions for using children's restraining systems in the operating instructions of your vehicle. The seat can be used in vehicles with ISOFIX anchoring systems (see type list) and in vehicles with a 3-point belt.

Please find the information on the seats approved for child safety seats of the weight classes 15 to 36 kg in the operating instructions of your vehicle.

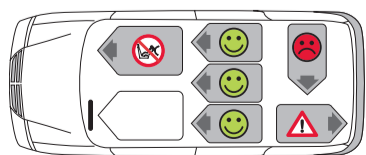
The KIDFIX II XP / KIDFIX II XP SICT is approved for two different methods of installation:

Symbol	Installation type	Approval type	Section
	with the ISOFIT locking arms on the ISOFIX fastening points in the vehicle. Observe the vehicle type list.	semi-universal a)	9A
	with the vehicle's 3-point seatbelt	universal	9B

a) This means that the child safety seat may only be used in vehicles that are listed in the vehicle type list enclosed. This type list is consistently kept up to date. The latest version can be obtained from us or from [www.britax.com](#)

You can use your child safety seat as follows:

In the direction of travel	Yes
Against the direction of travel	No ¹⁾
with 2-point belt	No
with 3-point belt ²⁾	Yes
with ISOFIX fastening points (between seat surface and backrest)	Yes
on front passenger seat	Yes ³⁾
on outer rear seat	Yes
on centre rear seat (with 3-point belt)	Yes ⁴⁾



- Use is permitted on a rearward-facing vehicle seat (e.g. in a van or minibus) only if the vehicle seat is also approved for use by adults. The seat may not be in the area of effect of an airbag.
- The safety belt must be approved to ECE R 16 or a comparable standard (see test label on belt with an "E" or "e" in a circle).
- If there is a front airbag: Slide the vehicle seat a long way back and refer to any instructions in vehicle owner's manual.
- Cannot be used if the vehicle seat is equipped with only a 2-point belt.

5. CARE AND MAINTENANCE

Please ensure that you only use the original BRITAX RÖMER replacement seat covers, as the seat cover is an integral part of the child safety seat and fulfils important functions to ensure the smooth operation of the system. Replacement seat covers are available from your dealer.

- The cover can be removed and washed with a mild detergent in the delicates programme of the washing machine (30 °C). Please observe the instructions on the washing label of the cover.
- The plastic parts and the XP-PAD can be cleaned with a soap sud. Do not use any caustic cleaning agents (such as solvents).

⚠ DANGER! The child seat must not be used without the seat cover.



Removing the seat cover

- Moving the headrest of the vehicle seat into the top position.
- Unhook the cover hook (19) on the rear of the backrest.
- Remove the top part of the cover and fold it forwards to the seat surface.
- Unhook the cover hook (19) on the front of the backrest.
- Pull the cover off of the seat surface.



Removing the headrest cover

- Unhook the cover loop (20) on the rear of the backrest.



- Unhook the cover hook (19) on the front of the backrest.
- Pull off the cover of the headrest (22).

► The cover can now be washed. Please observe the instructions on the washing label of the cover:



Re-fitting the cover

Proceed in reverse order to put on the cover.

6. DISASSEMBLY AND DISPOSAL

UNFASTENING YOUR CHILD:

- To unfasten your child, use the release button of your vehicle seat buckle.
- ℹ TIP!** The XP-PAD (11) on the Velcro fastener and remove the diagonal belt (17).
- Open the dark red belt holder (03) by pressing backwards the key on the belt holder (03) and unthreading the diagonal belt (17).
- To release the ISOFIT fastening, release the green safety button (08) and the red release button (07) first on the one and then on the other side opposite on another.

REMOVAL:



- Operate the release key of your vehicle seat buckle
 - Open the XP-PAD (11) on the Velcro fastener and remove the diagonal belt (17).
 - Open the dark red belt holder (03) by pressing backwards the key on the belt holder (03) and unthreading the diagonal belt (17).
 - To release the ISOFIT fastening, release the green safety button (08) and the red release button (07) first on the one and then on the other side opposite on another.
- The child safety seat can now be removed.

⚠ DANGER! The child safety seat must always be secured when it is in the vehicle, even if no child is being transported.

DISPOSAL:

Please observe the waste disposal regulations in your country.

Disposal of packaging	Container for cardboard boxes
Seat cover	Residual waste, thermal utilisation
Plastic parts	According to the labelling in the corresponding container
Metal parts	Container for metals
Belt straps	Container for polyester
buckle and tongue	Residual waste

15 kg - 36 kg
 (~4 Y - 12 Y)



KIDFIX II XP
 KIDFIX II XP SICT

User instructions

GB

